

 REDHAWK *Architect™ User's Guide*

Copyright 2021 by Concurrent Real-Time, Inc. All rights reserved. This publication or any part thereof is intended for use with Concurrent Real-Time products by Concurrent Real-Time personnel, customers, and end-users. It may not be reproduced in any form without the written permission of the publisher.

The information contained in this document is believed to be correct at the time of publication. It is subject to change without notice. Concurrent Real-Time makes no warranties, expressed or implied, concerning the information contained in this document.

To report an error or comment on a specific portion of the manual, photocopy the page in question and mark the correction or comment on the copy. Mail the copy (and any additional comments) to Concurrent Real-Time, 800 NW 33rd Street, Pompano Beach, Florida 33064. Mark the envelope “**Attention: Publications Department.**” This publication may not be reproduced for any other reason in any form without written permission of the publisher.

Concurrent Real-Time and its logo are registered trademarks of Concurrent Real-Time, Inc. All other Concurrent Real-Time product names are trademarks of Concurrent Real-Time while all other product names are trademarks or registered trademarks of their respective owners. Linux® is used pursuant to a sublicense from the Linux Mark Institute.

Printed in U. S. A.

Revision History:	Level:	Effective With:
November 2008	000	RedHawk Linux 5.1
January 2009	100	RedHawk Linux 5.2
February 2009	200	RedHawk Linux 5.2
July 2009	300	RedHawk Linux 5.2
October 2009	400	RedHawk Linux 5.2
July 2010	600	RedHawk Linux 5.4
October 2011	700	RedHawk Linux 6.0
April 2012	720	RedHawk Linux 6.0
December 2012	800	RedHawk Linux 6.3
July 2013	900	RedHawk Linux 6.3
September 2013	920	RedHawk Linux 6.3
February 2014	930	RedHawk Linux 6.3
August 2014	940	RedHawk Linux 6.5
September 2014	950	RedHawk Linux 6.5
October 2014	960	RedHawk Linux 6.5
May 2015	7.0	RedHawk Linux 7.0
August 2015	7.0-1	RedHawk Linux 7.0
June 2016	7.2	RedHawk Linux 7.2
December 2016	7.2-1	RedHawk Linux 7.2
August 2017	7.2-2	RedHawk Linux 7.2
October 2017	7.3	RedHawk Linux 7.3
April 2018	7.3-1	RedHawk Linux 7.3
September 2018	7.5	RedHawk Linux 7.5
March 2019	7.5-1	RedHawk Linux 7.5
June 2020	8.0	RedHawk Linux 8.0
June 2021	8.2	RedHawk Linux 8.2

Scope of Manual

This manual describes the RedHawk Architect™, an easy-to-use GUI interface for creating and maintaining a runtime and development environment for a target computer.

Structure of Manual

This manual consists of:

- Chapter 1, which introduces you to RedHawk Architect and guides you through its use..
- Chapter 2, which explains Importing ISO Images to avoid repetitive manual optical media insertion.
- Chapter 3, which explains PXE Management.
- Appendix A explains Manual DHCP configuration for Architect PXE targets.
- An Index containing an alphabetical reference to key terms and concepts and the pages where they occur in the text.

Syntax Notation

The following notation is used throughout this manual:

<i>italic</i>	Books, reference cards, and items that the user must specify appear in <i>italic</i> type. Special terms may also appear in <i>italic</i> .
list bold	User input appears in list bold type and must be entered exactly as shown. Names of directories, files, commands, options and man page references also appear in list bold type.
	Operating system and program output such as prompts, messages and listings of files and programs appears in <code>list</code> type.
[]	Brackets enclose command options and arguments that are optional. You do not type the brackets if you choose to specify these options or arguments.
hypertext links	When viewing this document online, clicking on chapter, section, figure, table and page number references will display the corresponding text. Clicking on Internet URLs provided in blue type will launch your web browser and display the web site. Clicking on publication names and numbers in red type will display the corresponding manual PDF, if accessible.

Related Publications

The following table lists Concurrent Real-Time documentation for RedHawk Architect and the components that can be installed using RedHawk Architect. Depending upon the document, they are available online on RedHawk Linux systems or from Concurrent Real-Time's documentation web site at <http://redhawk.concurrent-rt.com/docs>.

RedHawk Architect	Pub. Number
<i>RedHawk Architect Release Notes</i>	0898600
<i>RedHawk Architect User's Guide</i>	0898601
RedHawk Linux	
<i>RedHawk Linux Release Notes</i>	0898003
<i>RedHawk Linux User's Guide</i>	0898004
<i>RedHawk Linux FAQ</i>	N/A
NightStar RT Development Tools	
<i>NightView User's Guide</i>	0898395
<i>NightTrace User's Guide</i>	0898398
<i>NightProbe User's Guide</i>	0898465
<i>NightTune User's Guide</i>	0898515

Contents

Preface	iii
---------------	-----

Chapter 1 Using RedHawk Architect

Introducing Architect	1-1
Creating a root File System for Target Systems	1-2
Running Architect	1-2
Creating a New Session	1-5
Selecting Software to Install in the Image	1-6
Selecting Base Distribution Linux Packages	1-6
Using the Base Environments View	1-7
Using the Categories and Groups View	1-8
Using the All Packages View	1-9
Using the Selected Packages View	1-10
Selecting RedHawk OS Options	1-11
Selecting NightStar Options	1-13
Configuring an Image	1-14
Configuring General Settings	1-14
Configuring a Console	1-16
Configuring Networking	1-18
Configuring File Systems	1-20
Simple Disk Partitioning	1-21
Advanced Disk Partitioning	1-22
Basic File System Configuration	1-22
Optional File System Configurations	1-24
Read-Only Root Configuration	1-28
Special File Systems: tmpfs and bind	1-29
Configuring SELinux	1-31
Building an Image	1-32
Customizing an Image	1-36
Software Updates	1-37
Additional RPMs	1-38
Installing Board Support Packages	1-39
System Services	1-39
Kernel	1-40
Federal Information Processing Standards (FIPS)	1-41
Configure Custom Kernel	1-42
Import Kernel Configuration	1-44
Export Kernel Configuration	1-45
Compile Custom Kernel	1-45
Remove Custom Kernel	1-47
File Manager	1-47
Chroot Shell	1-48
Image Cleanup	1-49
Deploying an Image	1-50
Deploying to USB Devices	1-51
Installing via USB drive	1-54
Installing via DVD media	1-58

Installing via PXE over a Network	1-60
Booting Diskless via PXE over a Network	1-62
Remote Sync	1-67
Deploying to Virtual Machine	1-72
Editing an Existing Session	1-73

Chapter 2 Importing ISO Images

Importing ISO Images	2-1
Importing ISO Images From Optical Media	2-2
Copying ISO Images From Existing ISO Images	2-3
Linking To Existing ISO Images	2-4
Deleting Imported ISO Images	2-5

Chapter 3 PXE Management

Enabling PXE on Targets	3-1
Initializing PXE Services	3-1
Managing PXE Images	3-3
PXE Diskless Images	3-6
Managing PXE Targets	3-7
Adding Targets	3-8
Adding Single Targets	3-8
Adding Multiple Targets	3-9
Removing Targets	3-11
Editing Targets	3-11

Appendix A Manual DHCP Configuration A-1

Overview	A-1
Installing DHCP Configuration	A-2

Index Index-1

Using RedHawk Architect

This chapter introduces you to RedHawk Architect and provides instructions for its use.

Introducing Architect

RedHawk Architect is a powerful tool with an easy-to-use GUI that lets a developer choose the Linux and application modules to be included in RedHawk target images.

Designed to scale from complete workstations to dedicated servers and even down to small embedded applications, users can select as few or as many packages as desired from many different package groups. Architect allows the file system to be customized using as much or as little space as desired.

Architect saves all the configuration choices made by the user in the session file. Architect processes the session file to create and configure the target system image by installing all necessary RPM packages and dependencies and making the desired configuration changes. Packages are installed from system installation media which may be saved on the host system as ISO images.

After building the target system image, Architect allows customization of the target system image and also the RedHawk kernel itself.

Architect provides several deployment methods for installing the target system image onto the target system hard drives and/or flash memories. Architect can boot diskless targets with a target system image. It can also build virtual machine images of target system images for use with QEMU/KVM, allowing complete target system images to be deployed without a physical target.

Architect's PXE target manager makes it simple for users to install and configure systems as highly-integrated, high-performance computing clusters. Architect uses PXE to remotely install any number of targets over a network and also for diskless-booting multiple nodes with the same version of RedHawk.

Architect greatly simplifies the following tasks to create and maintain a target system's runtime and development environment:

- installing custom configurations of the CentOS® or Red Hat® Enterprise Linux distribution
- installing and configuring the RedHawk™ operating system
- installing target-specific board support packages (BSPs)
- installing NightStar™ RT application development tools
- installing RedHawk and NightStar software updates
- maintaining and reconfiguring a target root file system and kernel

- deploying target system images onto target systems or virtual machines

Creating a root File System for Target Systems

To create a target system image, use RedHawk Architect on a supported host system to perform the following steps:

1. Select the software to install in the image.
2. Configure the image.
3. Customize the image for your application.
4. Deploy the image on your target boards or to virtual machines.

These procedures are described in the sections that follow. The steps may be repeated to change the image and/or deploy it any number of times.

Running Architect

For instructions on installing RedHawk Architect, refer to the *RedHawk Architect Release Notes*.

Architect must be run as the root user. Note that the `sudo (8)` command can alternatively be used to run Architect.

You can start Architect from the command line or it can be launched from the GNOME or MATE desktop environments as follows:

1. as root user, command line:
architect
2. as non-root user, command line:
sudo -E architect
3. for GNOME and MATE desktops environments:
from the desktop's applications launcher search for Architect and click on it. If you are not logged in as the root user, you will be prompted for a password.

The very first time Architect is invoked after it is installed, a dialog appears presenting you with the Concurrent Real-Time End User Agreement.

Scroll down and press the Accept button to continue.

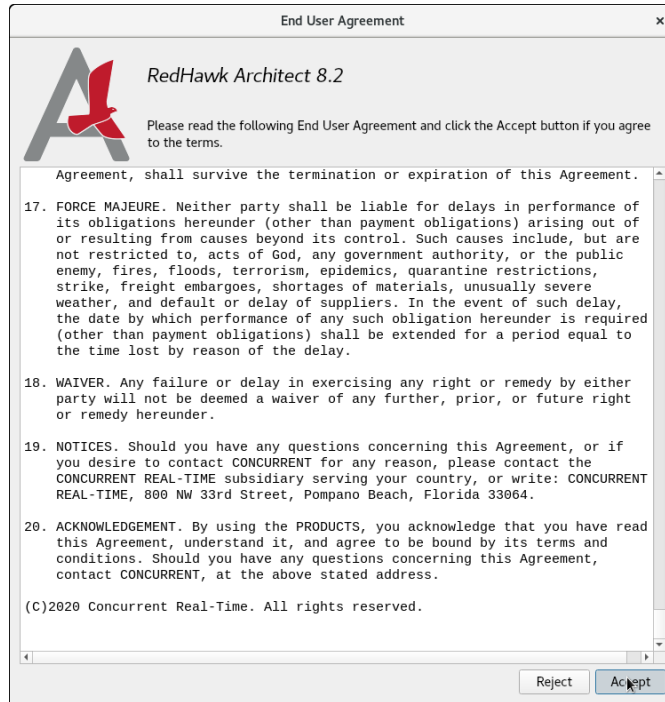


Figure 1-1 Architect End User Agreement

When Architect starts, a dialog appears presenting you with the option to start a new session or load an existing session.



Figure 1-2 Opening RedHawk Architect Dialog

To start a new session, click on the **N**EW button. See “Creating a New Session” on page 1-5 for details.

A session can be saved at any time and loaded later to continue work on the target system image. To edit an existing session, click on the **O**PEN button. See “Editing an Existing Session” on page 1-73 for details.

When the Cancel button is clicked, the RedHawk Architect main window appears, as shown in the following figure.

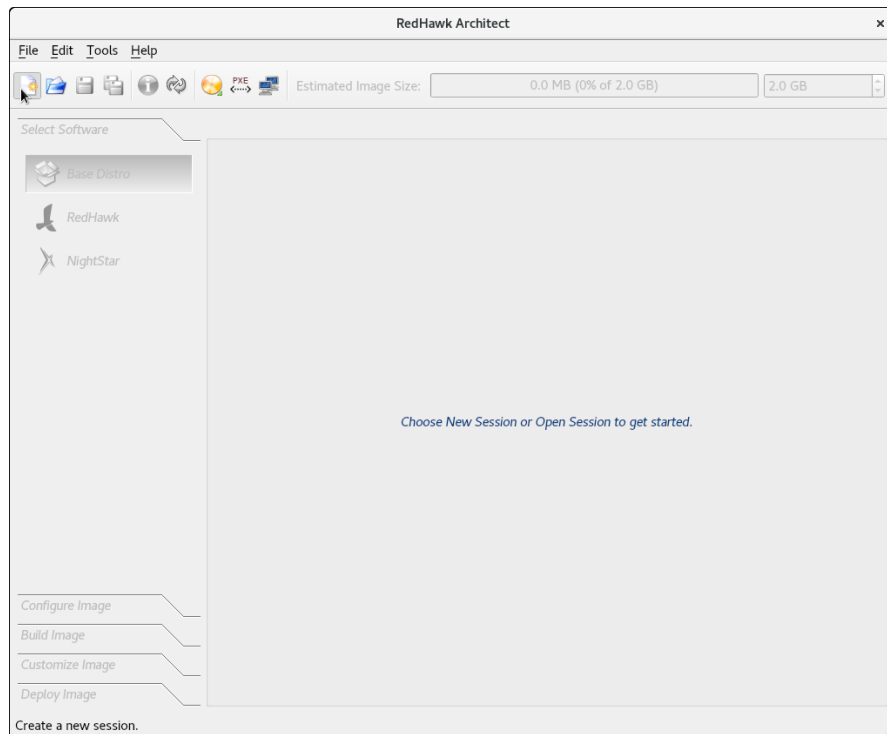




Figure 1-3 RedHawk Architect Main Window

From this window, the most common tasks performed are:

- start a new session by clicking on the New Session icon  or selecting **New Session** from the **File** menu along the top of the window. See “Creating a New Session” on page 1-5 for details.
- edit an existing session by clicking on the Open Session icon  or selecting **Open Session** in the **File** menu. See “Editing an Existing Session” on page 1-73 for details.

At this time you may also select your directory default preferences by selecting **Preferences** in the **Edit** menu. These defaults avoid having to enter a directory path each time.

The **Default session directory** is where you will find the session files created by Architect. The **Default image directory** is where the target system images are created. The **Default VM directory** and the **Default ISO directory** are the directories where, respectively, the virtual machine images and the DVD installer ISO images are saved.

The following figure shows the default User Preferences settings:

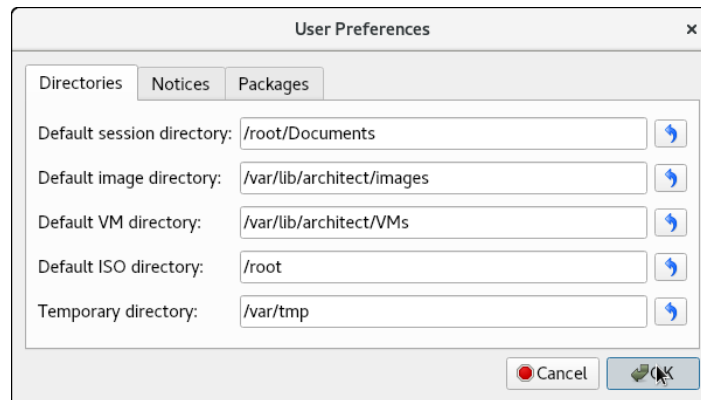


Figure 1-4 User Preferences Page

If space is limited in your `/root` partition, you will want to change your defaults to a partition with more available disk space. In the following example, the default settings were changed to reside in the `/home/architect` directory.

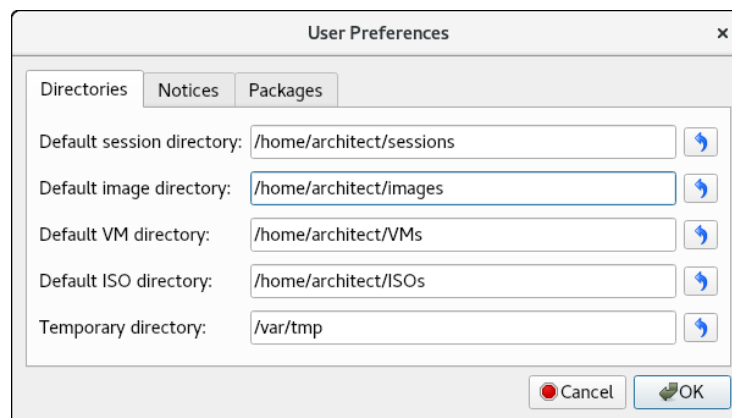



Figure 1-5 User Preferences Modified

Creating a New Session

An Architect session file is used to store all the configuration choices for a target. It also contains data about recent deployments.

When you select the **New** button from the opening Architect dialog, or the **New Session** icon  or **New Session** from the **File** menu along the top of the RedHawk Architect main window, the **New Session** dialog, shown below, displays.

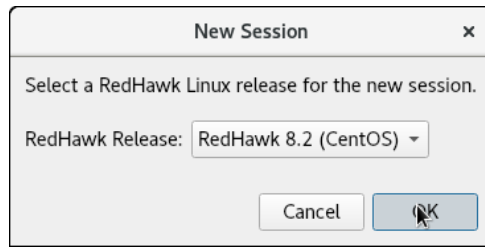


Figure 1-6 New Session Dialog

This dialog enables you to specify the version of RedHawk and the base distribution to be used for creating the target system image. Be sure that you have the correct version of the RedHawk, CentOS, Red Hat Enterprise Linux media or ISO files necessary to create a target system image of the specified RedHawk release.


Selecting Software to Install in the Image

To select the software to install in the target system image, click on **Select Software** from the toolbox on the left side of the RedHawk Architect main window. This allows you to select software from the following three groups:

- Base Distribution Linux packages
- RedHawk Linux operating system
- NightStar tools

Some initial selections are made for you by default; e.g. the core RedHawk OS. These packages appear with a gray check mark and cannot be deselected.

The **Estimated Image Size** gauge at the top of the RedHawk Architect main window indicates the approximate size the target system image will be when built. It also indicates the percentage of the target board's root device that will be consumed by the image.

Once an image is built, you may click on the  **Refresh Image Size** button to calculate the actual image size as it is stored on disk. Alternatively, you may select **Refresh Image Size** from the **Tools** menu. The **Estimated Image Size** gauge will be updated to reflect the *current* actual size.

The spin control box to the right of the **Estimated Image Size** gauge may be used to change the desired maximum size of the image. This value cannot exceed the known size of the root device but it can be made smaller. If the size of the root device is unknown the maximum value allowed is 1 terabyte.

Selecting Base Distribution Linux Packages

To select CentOS or Red Hat packages for the target system image, click on the **Base Distro** selection from the **Select Software** toolbox.

CentOS or Red Hat packages may be navigated by way of the “Package View” drop down menu on the top right hand of the page. Select the desired package view from the Package View menu. The following views are available and are described in the subsections that follow.

- Base Environments
- Categories and Groups
- All Packages
- Selected Packages

Note that the Base Environments view will be initially selected; a base package environment must be chosen before the other package views will become available.

Note that the following features are available in all the views except for the Base Environments view:

- The Undo button can be used to reverse the last package select or package deselect operation. This can be used repeatedly to reverse several operations if desired, which is useful for experimenting with package sets to see the effect on the estimated image size.
- To get more information about a package, right-click to display a menu of options. Multiple packages can be processed as a group by highlighting the packages and then right-click to display the menu of options. When choosing the select or deselect menu options, software dependent on the highlighted packages will be automatically selected or deselected. The figure below shows two packages selected as a group.

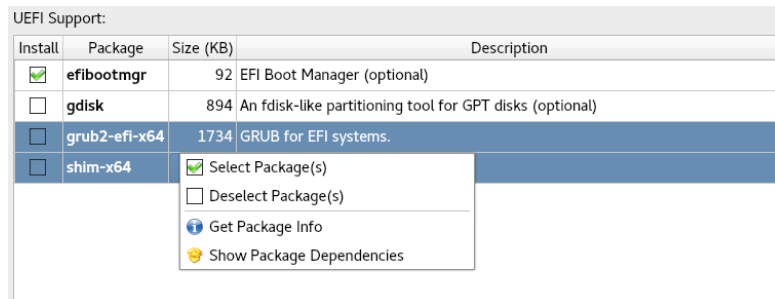


Figure 1-7 Selecting Multiple Packages

Using the Base Environments View

The Base Environments view requires the user to choose a high-level task-based characterization of the CentOS or Red Hat packages that will be initially selected. This view should be very familiar to users that have previously performed a native CentOS or

Red Hat installation; it is shown in the following figure.

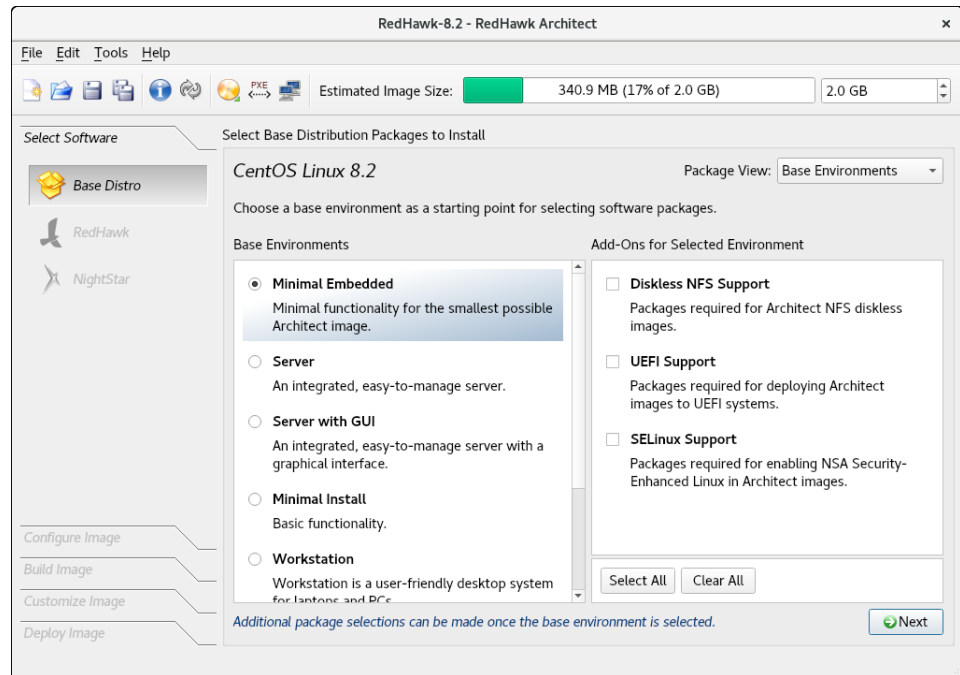


Figure 1-8 Choosing Target Characterization, Base Environments View

For example, if the target will primarily be used to run a web server, choose the **Server** or **Server GUI** environment. Note that the set of base environments available may be different depending on the current session's distribution type and revision.

To see more information about a particular environment, click on the **Get Environment Info** button that is displayed when you place the cursor over the environment and right-click.

Once a **Base Environment** has been chosen, a list of corresponding optional package groups will be displayed in the **Add-Ons for Selected Environment** area. You can choose these package groups individually or press the **Select All** and **Clear All** buttons to affect all optional package groups at once.

After you have chosen the desired base environment and associated optional packages, press the **Next** button at the lower right to add all of the corresponding packages to the session and enable the other package views for further package customization.

Using the Categories and Groups View

The **Categories and Groups** view provides a view of CentOS or Red Hat packages organized in a hierarchy of groups. The package group hierarchy is the standard CentOS and Red Hat package group hierarchy. This view is shown in the following figure.

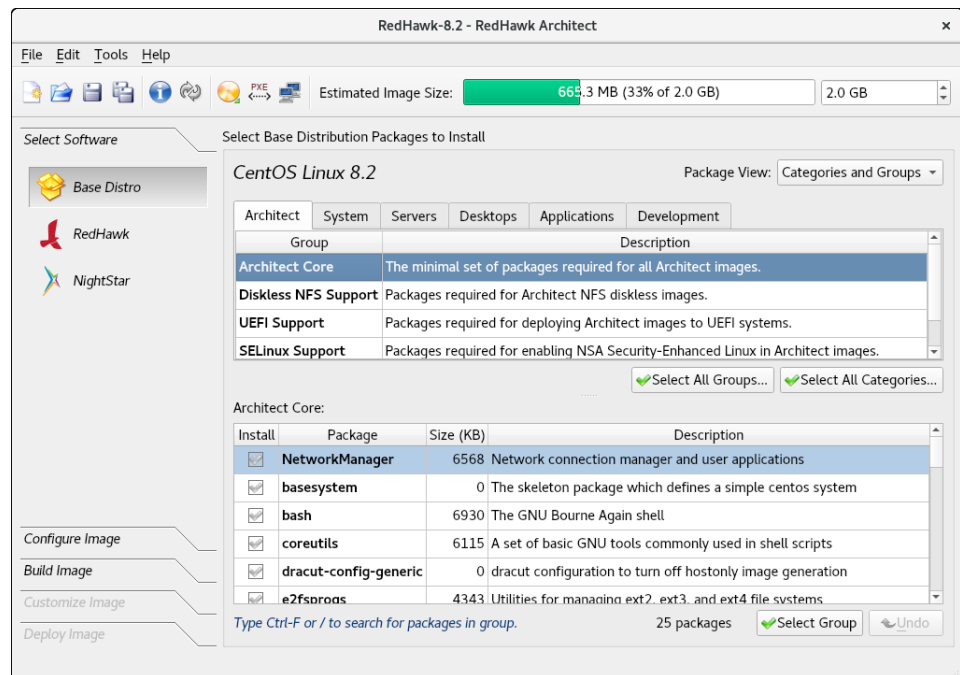


Figure 1-9 Selecting Base Distro Packages, Categories and Groups View

Packages may be selected or deselected by choosing a package group in the upper pane and then checking or unchecking packages in that group in the lower pane. All the packages in a chosen group may be selected with the **Select Group** button.

All the packages that are in all the groups of the currently chosen package category may be selected with the **Select All Groups...** button. Also, the **Select All Categories...** button may be used to select all of the packages in all of the groups of all of the categories.

Using the All Packages View

The **All Packages** view provides a sorted linear list of all CentOS or Red Hat packages.

The following figure shows the All Packages view.

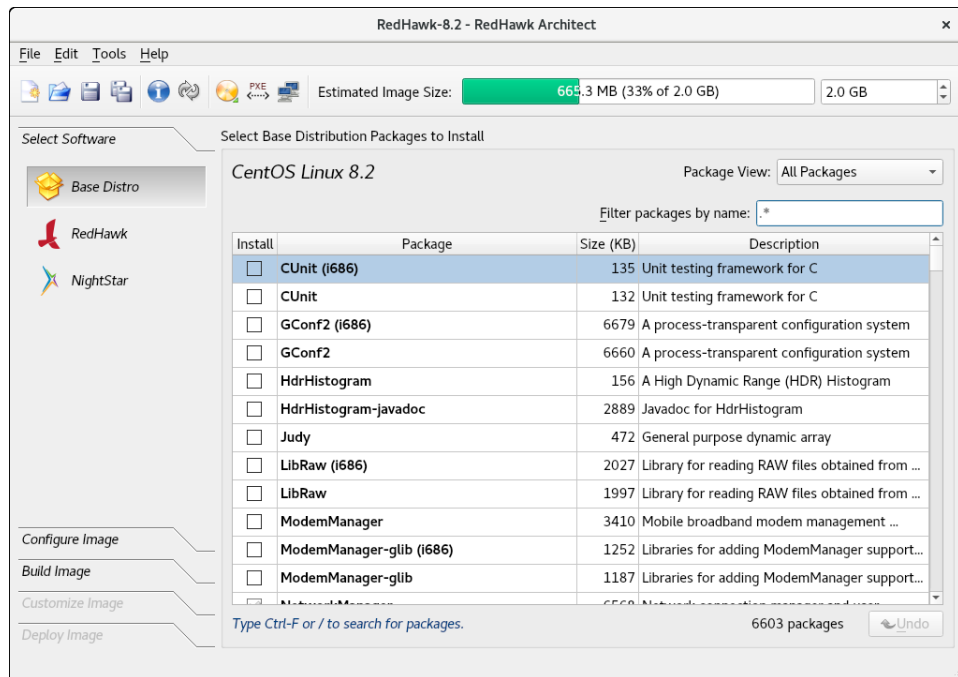


Figure 1-10 Selecting Base Distro Packages, All Packages View

Packages may be selected or deselected from this list. The Filter packages by name box allows you to search for packages by name.

All packages can be selected by clicking on the Select All Packages button.

Using the Selected Packages View

The Selected Packages view provides a sorted linear list of all CentOS or Red Hat packages that are currently selected for installation.

The figure below shows the Selected Packages view.

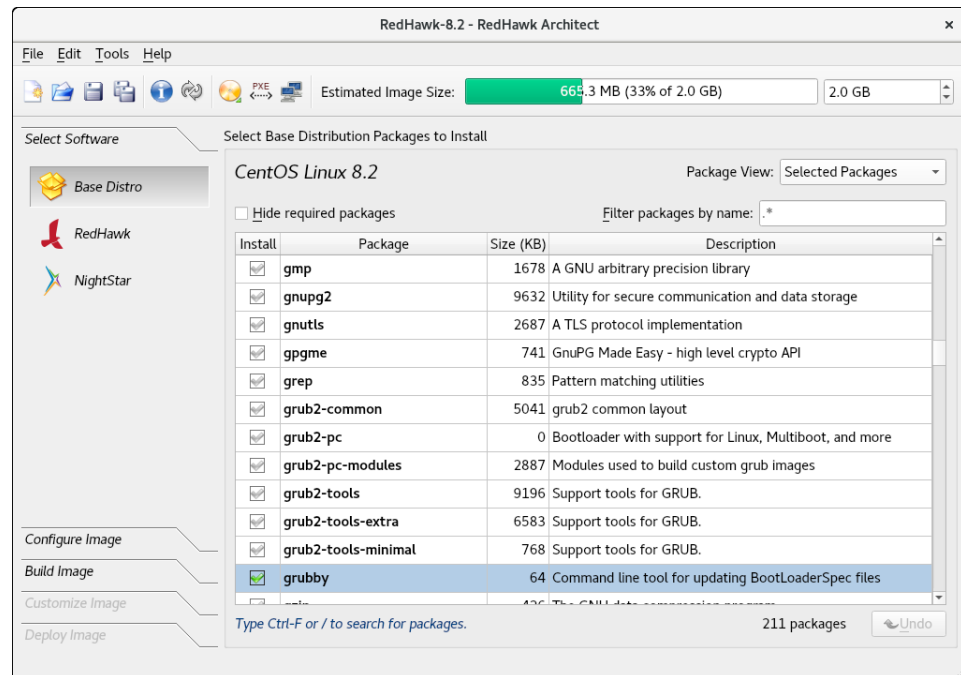


Figure 1-11 Selecting Base Distro Packages, Selected Packages View

Packages may be deselected from this list. The Filter packages by name box allows you to search for packages by name.

To exclude the required packages from the list, check the Hide required packages check box. When this box is checked, only the optional packages are shown.

Selecting RedHawk OS Options

To select RedHawk Linux OS and kernels for the target system image, click on the RedHawk selection from the Select Software toolbox.

The RedHawk page is shown in the following figure.

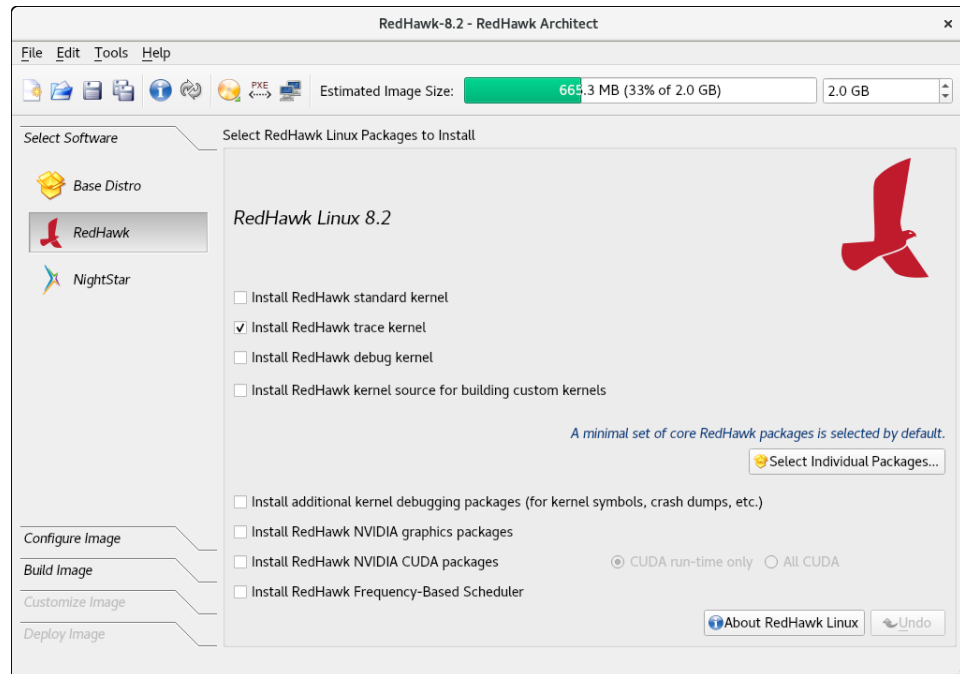


Figure 1-12 Selecting RedHawk Options

Select which RedHawk kernel(s) to install by checking the appropriate check box(es): Standard, Trace and/or Debug. The standard kernel does not have tracing or debugging capabilities and it is the smallest sized kernel option. The trace kernel does offer tracing capabilities but it does not have debugging capabilities. The debug kernel offers both debugging and tracing capabilities. Note that at least one kernel *must* be selected; the GUI enforces this by ensuring that a sole remaining selection cannot be deselected.

Select Install RedHawk kernel source for building custom kernels to ensure that the complete kernel source code will be installed in the image. The kernel source is only required for building custom kernels and loadable kernel drivers.

Advanced users may wish to press the Select Individual Packages... button to refine exactly which RedHawk packages they wish to install from the complete set of RedHawk packages that are available on the media. Normally this is not necessary, but the option exists to facilitate minimizing the image size for very small flash devices.

Select Install additional kernel debugging packages to install extra support for live kernel debugging. This option is also required for RedHawk to be able to create crash dumps. See the *RedHawk User's Guide* for more information.

If the target system has an NVIDIA graphics or CUDA card you may want to select the Install RedHawk NVIDIA graphics packages and Install RedHawk NVIDIA CUDA packages radio buttons. Note that you should only select this option if the target system actually has NVIDIA hardware. If you select the NVIDIA CUDA option, then you will be allowed to choose all the CUDA software or only run-time software.

Select **Install Frequency-Based Scheduler** if you have previously purchased and wish to install the RedHawk FBS software into the target image.

Selecting NightStar Options

To select NightStar tools for the image, click on the **NightStar** selection from the **Select Products** toolbox. The **NightStar RT** page, shown in the following figure, displays.

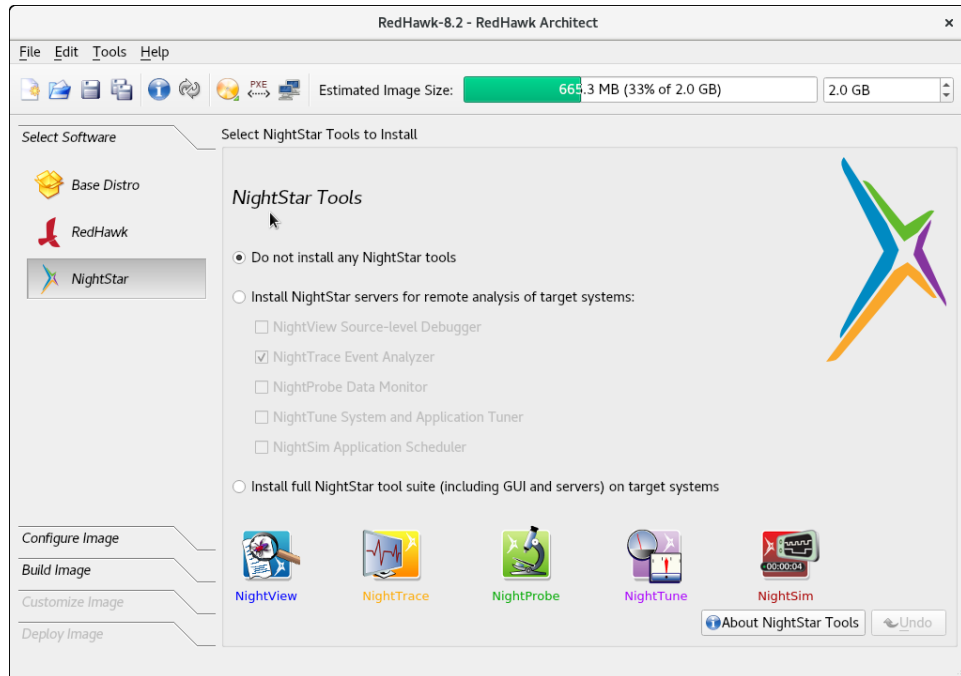


Figure 1-13 Selecting NightStar Tools

By default no NightStar tools will be installed in the target image. Choose the **Install select NightStar servers only** radio button if you wish to only install NightStar remote support for various tools. You may select individual servers from the list by clicking on the check boxes for each tool. The remote support allows NightStar tools running on a host system to connect to and control the target remotely.

Choose the **Install all NightStar clients and servers** radio button to indicate that all NightStar servers and clients are to be installed in the image. This allows the target to run all NightStar tools locally, in addition to providing the remote support described above.

Click on the **About NightStar** button to see a detailed description of each of the individual NightStar tools that are available for installation.

Configuring an Image

It is possible to configure a target system image before or after the image has been built by selecting **Configure Image** from the toolbox on the left side of the RedHawk Architect main window. This selection is available before and after an image is built, however note that there are additional **Apply** buttons present on the pages *after* an image has been built. It is necessary to apply any changes made after the image has been built in order for the changes to be reflected in the on-disk target system image.

To configure the target system image, select **Configure Image** from the toolbox on the left side of the RedHawk Architect main window. This allows you to configure the following four groups:

- General Settings
- Console
- Networking
- File Systems
- SELinux

Some initial selections are made for you by default.

Configuring General Settings

To configure time zone, root password and default system run level for the target system image, click on **General Settings** from the **Configure Image** toolbox.

The General Settings configuration page appears, as shown in the following figure.

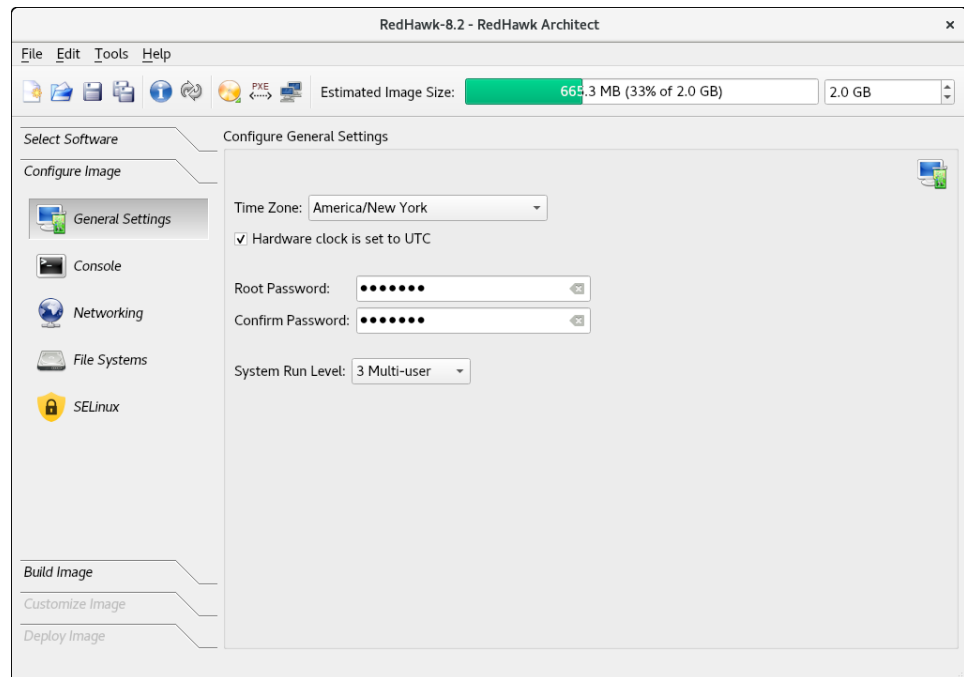


Figure 1-14 General Settings Configuration Page

In the **Time Zone** section, select the proper time zone for your location from the drop-down menu. Click in the check box to indicate if your system clock uses UTC.

NOTE

By default the **Hardware clock is set to UTC** check box is selected, so be sure to set the target system's BIOS clock in **Coordinated Universal Time**. If you do not select this, set the BIOS clock according to the selected time zone.

In the **Root Password** section, enter the root password in the **Password** field. Reenter it in the **Confirm Password** field.

NOTE

The default root password is **redhawk** (all lowercase letters and only one word with no spaces).

In the **System Run Level** section, select the desired default run level from the drop-down menu.

If a change is made to the general settings after the target system image has been built, an *Out-of-Sync Notice* will appear at the bottom of the page, as shown in the following figure:

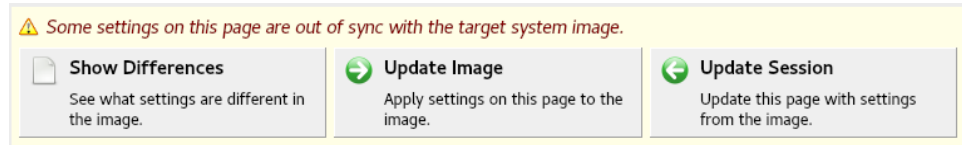


Figure 1-15 General Settings and Image Out-of-Sync Notice

The appearance of an Out-of-Sync Notice on any page indicates that the settings currently displayed in the session do not match the state of the associated target image. Click on **Show Differences** to see which settings are currently out-of-sync. To resolve the issue, it is necessary to either click on **Update Image** or **Update Session**.

The **Update Image** button will apply the currently displayed settings to the target image, whereas the **Update Session** button will change the currently displayed settings to match the state of the target image. The Out-of-Sync Notice will disappear once an update direction has been selected.

Configuring a Console

To configure a serial console for the target system image, click on **Console** from the **Configure Image** toolbox.

The Configure Console page appears, as shown in the following figure.

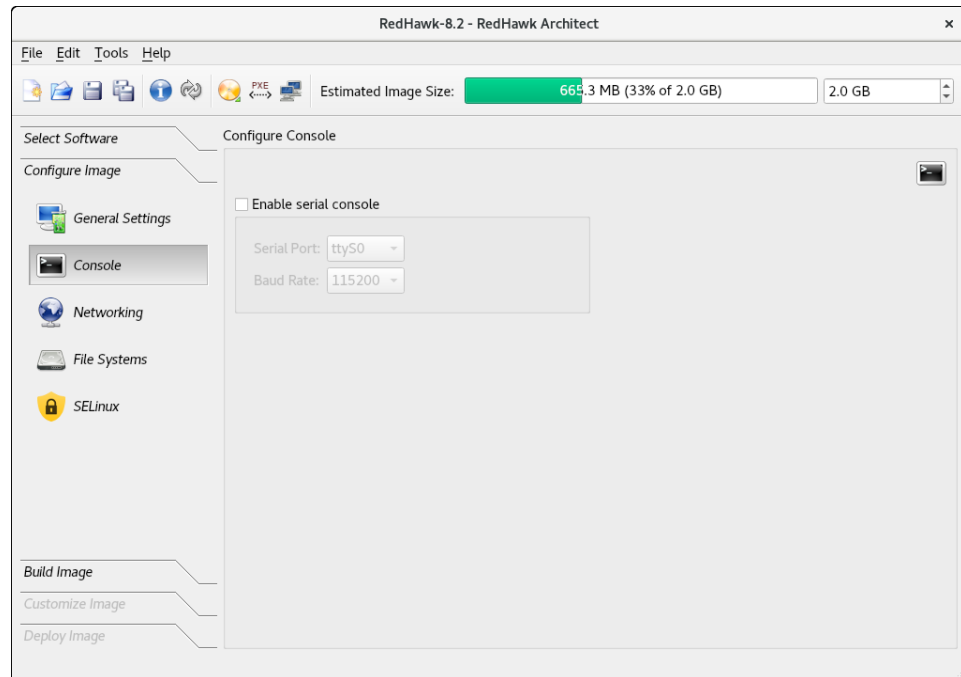


Figure 1-16 Console Configuration Page

Click on the **Enable serial console** check box to activate the fields that define the port and baud rate for the console.

Select a port from the **Serial Port** drop-down menu.

Select a baud rate from the **Baud Rate** drop-down menu.

If a change is made to the console settings after the target system image has been built, an *Out-of-Sync Notice* will appear at the bottom of the page, as shown in the following figure:

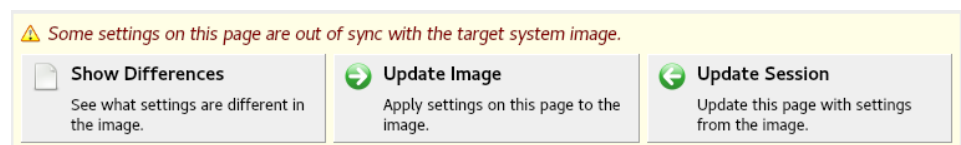


Figure 1-17 Console Settings and Image Out-of-Sync Notice

The appearance of an *Out-of-Sync Notice* on any page indicates that the settings currently displayed in the session do not match the state of the associated target image. Click on **Show Differences** to see which settings are currently out-of-sync. To resolve the issue, it is necessary to either click on **Update Image** or **Update Session**.

The **Update Image** button will apply the currently displayed settings to the target image, whereas the **Update Session** button will change the currently displayed settings to match the state of the target image. The *Out-of-Sync Notice* will disappear once an update direction has been selected.

NOTE

If your target system does not have a serial port do not configure a serial console on this page.

Configuring Networking

To configure networking for the target system image, click on **Networking** from the **Configure Image** toolbox. The **Configure Networking** page appears, as shown in the following figure.

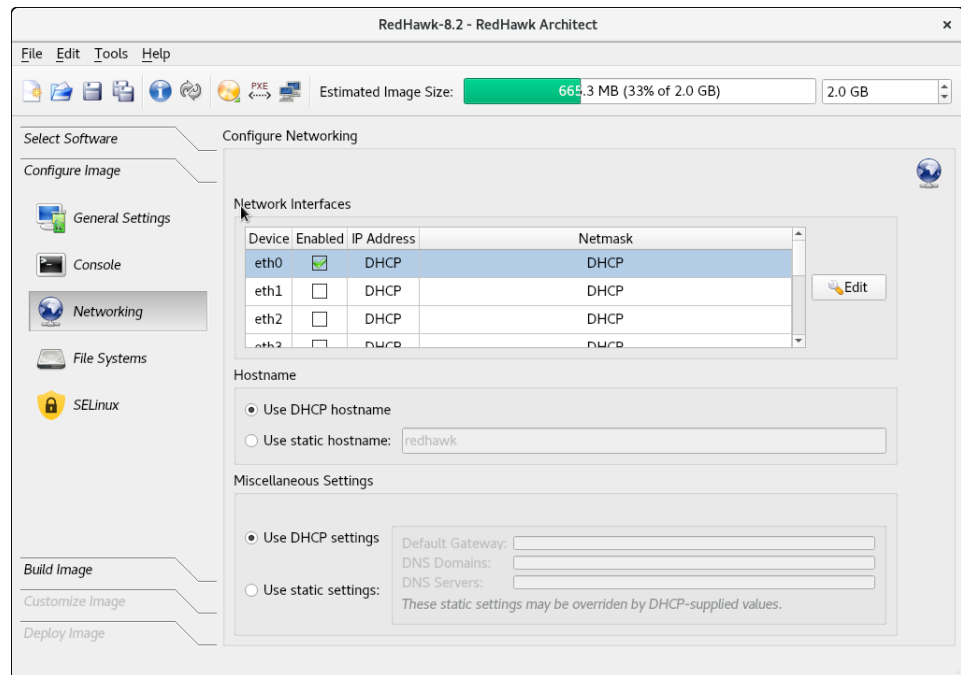


Figure 1-18 Network Configuration Page

All available network interfaces are listed in the **Network Interfaces** section. There may be more or less interfaces shown depending on the target board selected.

To configure a particular network interface, click on the interface to select it, then click on the **Edit** button.

The Configure Network Interface dialog shown in the following figure displays.

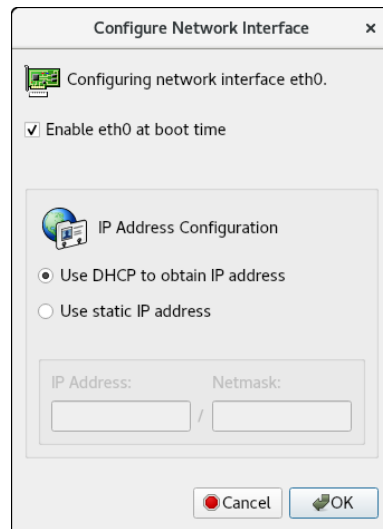


Figure 1-19 Configure Network Interface Dialog

The selected network interface is displayed at the top of the dialog.

Click on the `Enable eth0 at boot time` check box to enable/disable the interface automatically on boot.

Choose the `Use DHCP to obtain IP address` radio button to enable dynamic address configuration, or choose the `Use static IP address` radio button to enable manual address configuration. For manual configurations, enter the IP address and netmask in the appropriate fields.

Click on `OK` to apply the settings to the image and close the dialog. Click `Cancel` to cancel changes.

On the `Configure Networking` dialog under the `Hostname` and `Miscellaneous Settings` areas, either choose to use DHCP or supply the hostname, default gateway, domains, and DNS server addresses in the appropriate fields. Note that multiple DNS domains and DNS servers may be specified by separating multiple entries with either spaces or commas. Be sure to choose to use DHCP appropriately if a DHCP server will be providing some or all of the network parameters dynamically.

If a change is made to the network settings after the target system image has been built, an *Out-of-Sync Notice* will appear at the bottom of the page, as shown in the following figure:

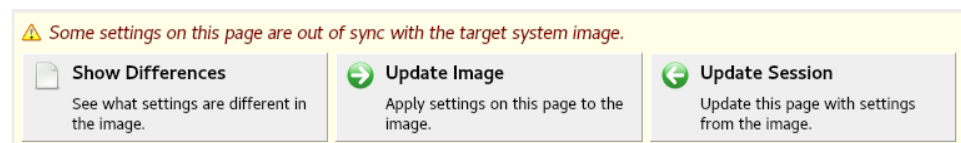


Figure 1-20 Network Settings and Image Out-of-Sync Notice

The appearance of an Out-of-Sync Notice on any page indicates that the settings currently displayed in the session do not match the state of the associated target image. Click on **Show Differences** to see which settings are currently out-of-sync. To resolve the issue, it is necessary to either click on **Update Image** or **Update Session**.

The **Update Image** button will apply the currently displayed settings to the target image, whereas the **Update Session** button will change the currently displayed settings to match the state of the target image. The Out-of-Sync Notice will disappear once an update direction has been selected.

Configuring File Systems

To configure file system options for the target system image, click on **File Systems** from the **Configure Image** toolbox. The **Configure File System** page appears, as shown in the following figure.

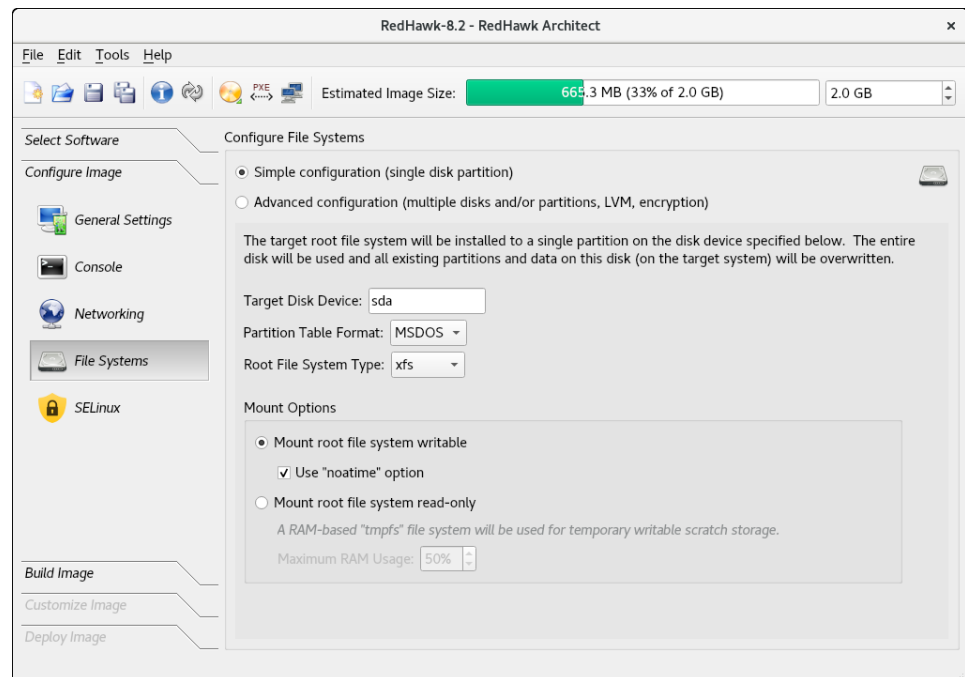


Figure 1-21 File System Configuration Page

There are two different partitioning modes supported: **Simple configuration** and **Advanced configuration**. This page defaults to the simple disk partitioning mode.

The following are the possible **Target Disk Device** names:

1. SATA disks: `sdX` where `X` can be from a-z. For example, `sda`.
2. NVMe disks: `nvmeXnY` where `X` can be from 0-9 and `Y` from 1-99. For example, `nvme0n1`.

3. VirtIO disks: vdX where X can be from a-z. For example, vda.

NOTE

When using the PXE Diskless deployment method, all file system configuration settings are ignored; any local drive media that is present on the target will be untouched and ignored. See “Booting Diskless via PXE over a Network” on page 1-62 for more information.

Simple Disk Partitioning

Simple disk partitioning is the traditional partitioning that was offered by early versions of RedHawk Architect. In this mode only a single partition will be created on the specified disk device.

Indicate the desired root device in the **Target Disk Device** field.

Select the desired **Partition Table Format** to be used when initializing the root device; both the MSDOS and GPT partition table formats are supported.

Select the desired **Root File System Type** to be used for the file system on the disk partition; currently the XFS, EXT4, EXT3 and EXT2 file system types are supported.

By default **Mount writable** is selected and the root file system will be mounted with both read and write permissions.

Check the **Use “noatime”** option box to mount the root file system with the *noatime* option. This helps to minimize the number of writes to the root device when root is *not* mounted read-only.

Select **Mount root file system read-only** to mount the root file system *read-only*. Mounting the root file system read-only offers improved security and it will also help preserve the life of root flash devices. When mounting the root file system read-only, a RAM-based file system is then allocated for temporary storage. The **Maximum RAM Usage** for this file system is set, by default, to 50 percent of RAM. The default can be changed by clicking on the up and down arrows of the spin control box.

If a change is made to the file-system settings after the target system image has been built, an *Out-of-Sync Notice* will appear at the bottom of the page, as shown in the following figure:

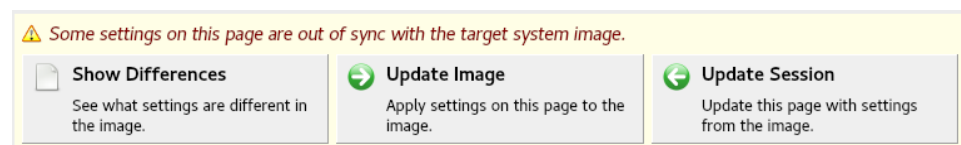


Figure 1-22 File-System Settings and Image Out-of-Sync Notice

The appearance of an Out-of-Sync Notice on any page indicates that the settings currently displayed in the session do not match the state of the associated target image. Click on **Show Differences** to see which settings are currently out-of-sync. To resolve the issue, it is necessary to either click on **Update Image** or **Update Session**.

The **Update Image** button will apply the currently displayed settings to the target image, whereas the **Update Session** button will change the currently displayed settings to match the state of the target image. The **Out-of-Sync Notice** will disappear once an update direction has been selected.

Advanced Disk Partitioning

The advanced disk partition mode provides a more modern and flexible disk partitioning scheme. In this mode you can configure multiple partitions and even multiple disks using the **Disk Partitioning** tab, Logical Volumes via the **LVM** tab, and special file systems like **tmpfs** and **bind** via the **Special File Systems** tab. The **All File Systems** tab will list all the file systems to be configured on the target system. You can also configure partitions and logical volumes with LUKS2 encryption.

NOTE

You must ensure that any additional disks defined using advanced partitioning, in fact, exist on the target for the installation to succeed.

NOTE

Multiple disks cannot be partitioned with the **USB Devices** or the **Virtual Machines** deployment methods. In order to use multiple disks you must deploy with one of the **Installer** methods (via DVD, USB or PXE).

If a change is made to the file-system settings after the target system image has been built, an *Out-of-Sync Notice* will appear at the bottom of the page, as shown in the figure below.

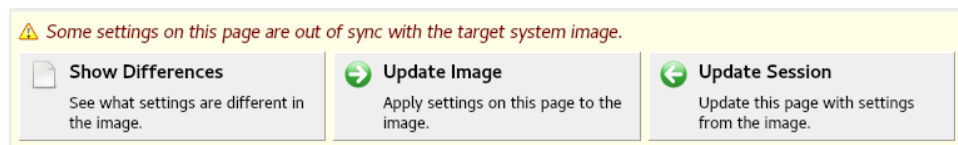


Figure 1-23 Advanced Disk Partitioning and Image Out-Of-Sync Notice

Basic File System Configuration

Starting in the **Configure File Systems** page, click on the **Advanced** configuration button and the following menu appears. Press **OK** for the basic default file system configuration. All the partitions will be made with the same basic options but you can modify the settings later, on a per partition basis, using the **Edit Partition** button found in the **Disk**

Partitioning tab.

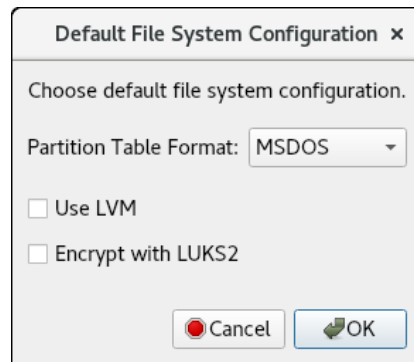


Figure 1-24 File System Basic Default Configuration

The Disk File Partitioning tab as shown below shows the disk partitioning for the basic default configuration.

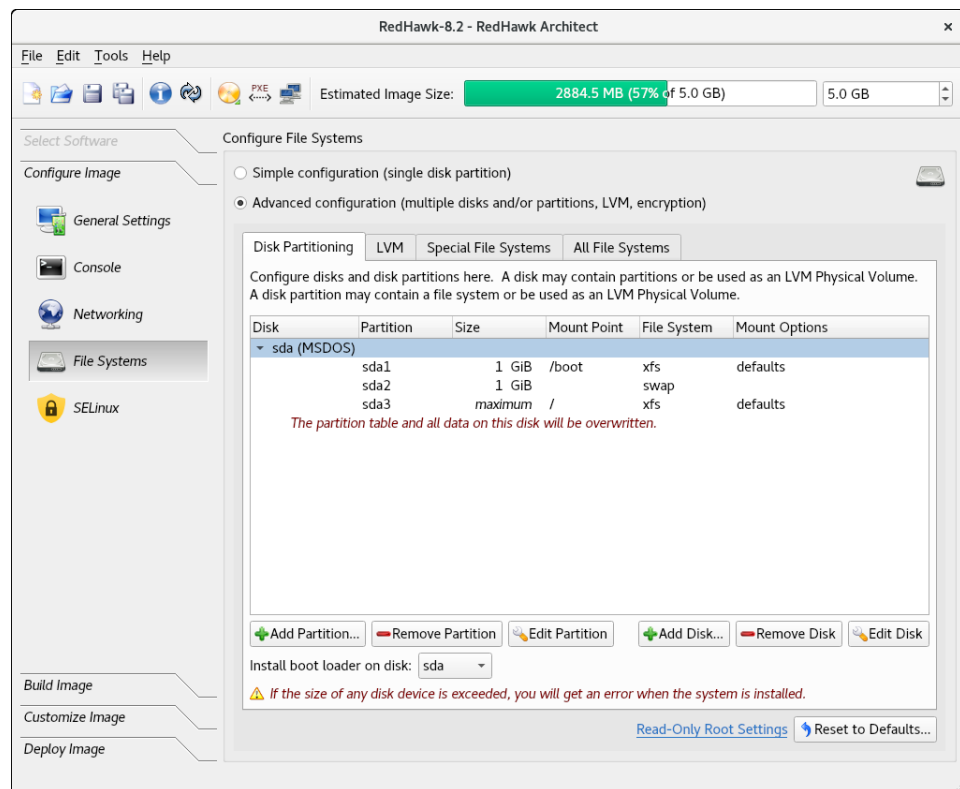


Figure 1-25 Disk Partitioning with Basic Default Configuration

Press Add Partition to add new partitions to the currently selected disk.

Press Remove Partition to remove the currently selected partition.

Press Edit Partition to edit attributes of the currently selected partition.

Press Add Disk to add a new disk to the set of currently available disks.

Press **Remove Disk** to remove the currently selected disk from the set of available disks.

Press **Edit Disk** to edit attributes of the currently selected disk.

Use the **Install boot-loader on disk** pull-down menu to choose the disk that you will be booting from if multiple disks have been defined.

Press **Reset To Defaults** to discard all the current settings and start from the beginning.

Optional File System Configurations

Optionally you can configure the GPT partitioning table format, the logical volume manager (LVM) and the Linux Unified Key Setup (LUKS2) for encryption. It is beyond the scope of this guide to document these features but documentation can be found online. Although Architect makes it pretty easy to configure LVM, you might need to know general concepts for advanced configurations.

Architect supports one passphrase per target for all LUKS2 configured partitions, however, multiple passphrases or keyfiles may be configured by the user on the target system. The user will be prompted for the passphrase in the deployment stage.

For conciseness, all the options are set in this example but note that they can be chosen independent of each other. All the partitions will be made with these options set but the settings can be modified at a later time, on a per partition or per logical volume basis, using the **Edit Partition** button in the **Disk Partitioning** tab or the **Edit Logical Volume** in the **LVM** tab.

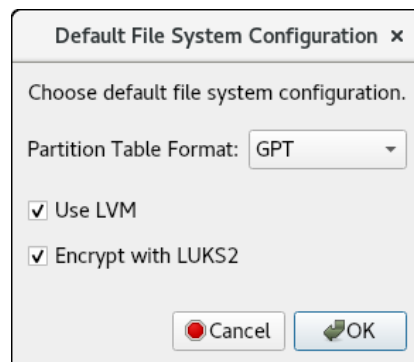


Figure 1-26 File System Optional Configuration

When GPT, LVM, and LUKS2 encryption are configured, the Disk Partitioning configuration looks as follows:

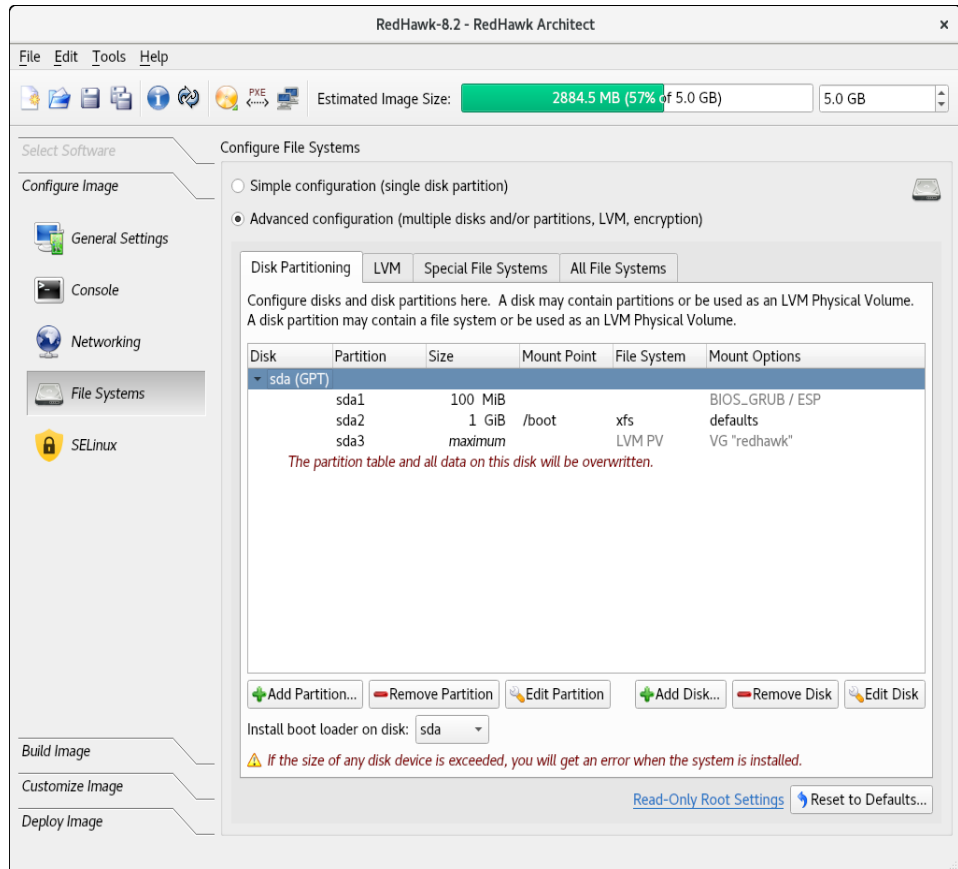


Figure 1-27 Disk Partitioning with GPT format, LVM and LUKS2 encryption

The LVM tab shows the logical volumes configured. The lock symbol on the left side of each logical volume shows that the LUKS2 encryption is enabled:

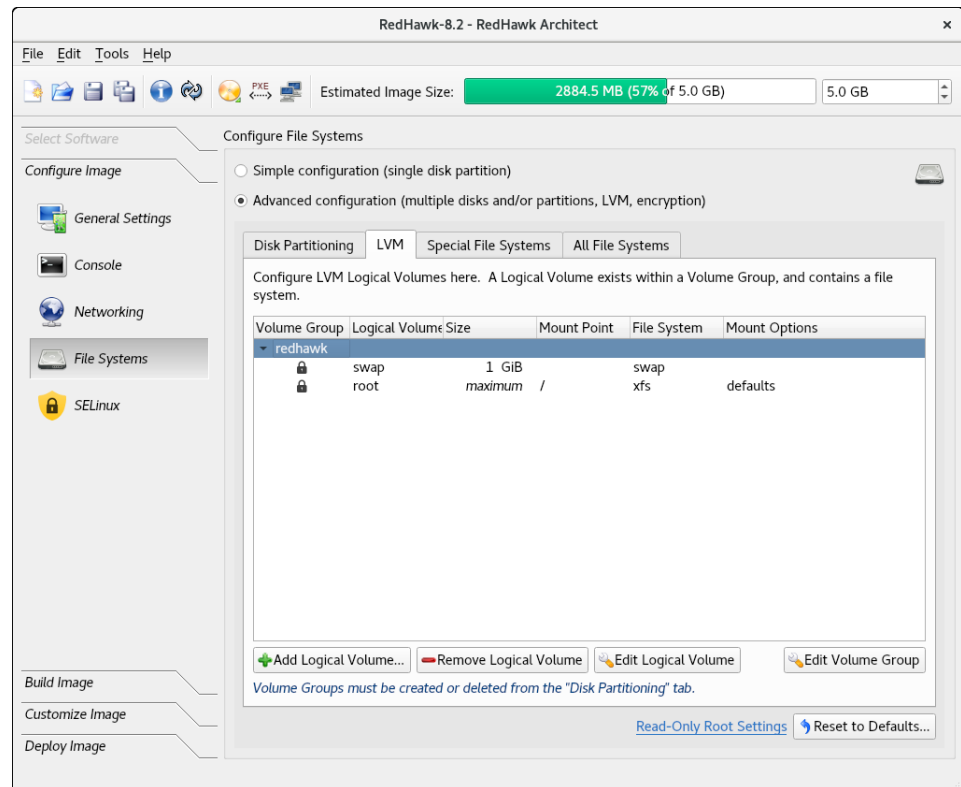


Figure 1-28 LVM tab showing LVM Logical Volumes and LUKS2 encryption

Press **Add Logical Volume** to add a new logical volume to the currently selected volume group.

Press **Remove Logical Volume** to remove the currently selected logical volume.

Press **Edit Logical Volume** to edit attributes of the currently selected logical volume.

Press **Edit Volume Group** to edit attributes of the currently selected volume group.

To create a volume group you must first allocate a disk partition or a whole disk in the **Disk Partitioning** tab. In the next example, a disk partition is configured as a volume group by clicking on the **Use Partition as LVM Physical Volume** box and assigning a name to it. In this example the name 'data' is used. If instead of a disk partition, you want to use a whole disk, use the **Add Disk**, instead of the **Add Disk**

Partition button.

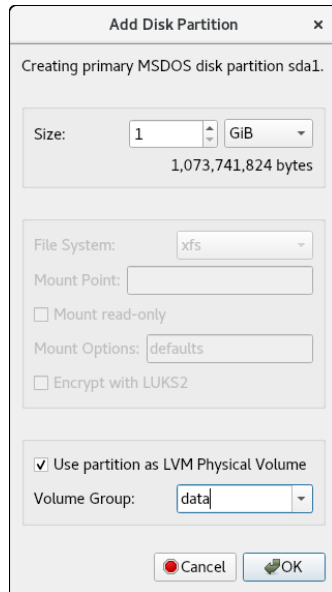


Figure 1-29 Adding a new partition to be used for a new Volume Group

The following snippet shows a new partition, sda2, added in the Disk Partitioning tab.

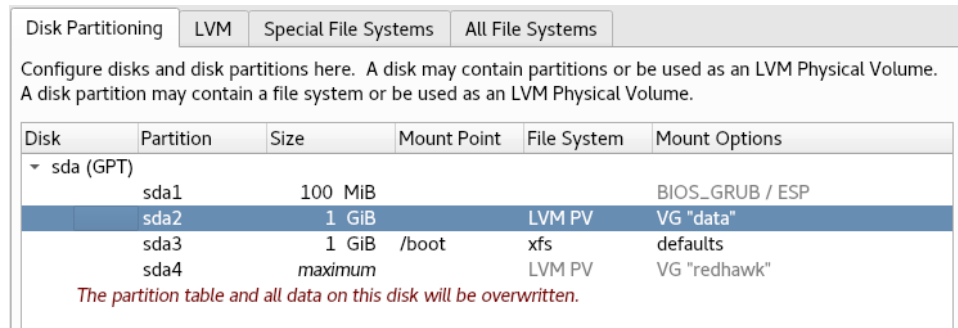


Figure 1-30 New disk partition added for Volume Group 'data'

And the LVM tab will show a new volume group 'data' created:

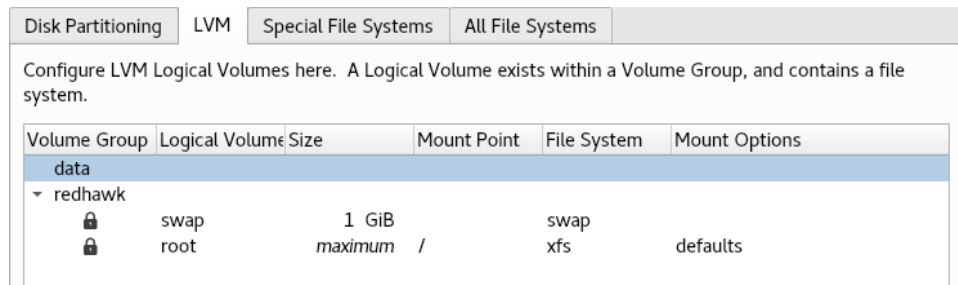


Figure 1-31 New Volume Group 'data'

From the LVM tab, click on the new volume group just created and press the **Add Logical Volume** to create a logical volume under the new volume group. In this example the new logical volume is 'foo':

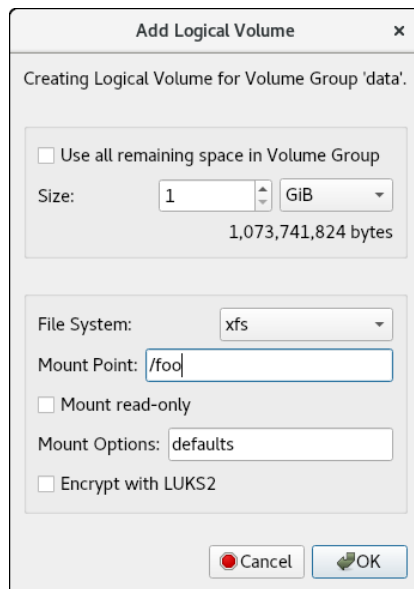


Figure 1-32 Add logical volume 'foo' to the new volume group 'data'

The following snippet shows a new logical volume 'foo' in the newly created volume group 'data'.

Volume Group	Logical Volume	Size	Mount Point	File System	Mount Options
data	foo	1 GiB	/foo	xfs	defaults
redhawk	swap	1 GiB		swap	
	root	maximum	/	xfs	defaults

Figure 1-33 Logical Volume 'foo' created in new group 'data'

Read-Only Root Configuration

To configure the root file system read-only, click on the **Configure Read-only Root Settings** link on the lower right hand of the **Configure File Systems** page. This will bring up a dialog that will instruct you on the steps to take and on implementation choices. The first step is to configure the root file system as read-only via the **Edit Partition** button. Then, click again on the **Configure Read-only Root Settings** link for information on the next steps.

Temporary storage is required when root is configured as read-only. This can be achieved via a RAM-based root file system (the default) or by creating a writable file system named

`/var/lib/stateless/writable` using the Add Partition button. Note that the RAM-based file system size is configurable as a percentage of RAM space. While these two options are writable they are not persistent over boots. Optionally, a persistent file system can be created with a mount point of `/var/lib/stateless/state`. When finished partitioning the disk, verify the configuration by clicking on the Configure Read-only Root Settings link one last time.

The figure below shows an example of a root read-only partition scheme with the required scratch storage for root configured as a disk partition (`/var/lib/stateless/writable`) and the optional persistent disk partition (`/var/lib/stateless/state`).

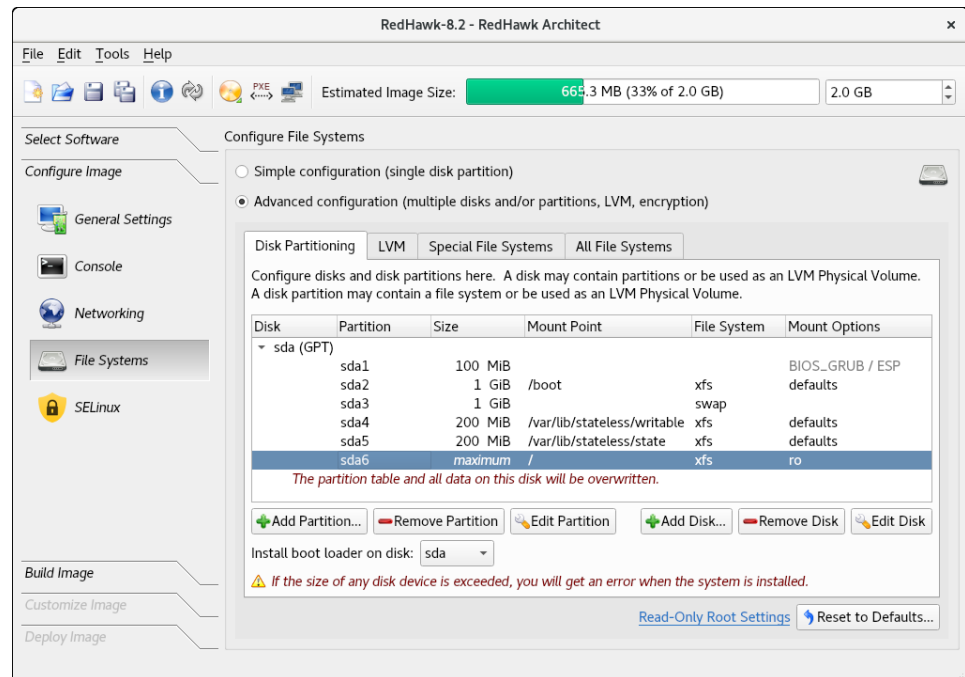


Figure 1-34 Example root read-only partitioning scheme

Special File Systems: tmpfs and bind

The Special File Systems tab is used to configure special (non-disk) file systems. See the mount (8) man page for more information on these special file systems.

Initially this page is blank but in the following figure below two example entries have been added; one of type **tmpfs** and one of type **bind**.

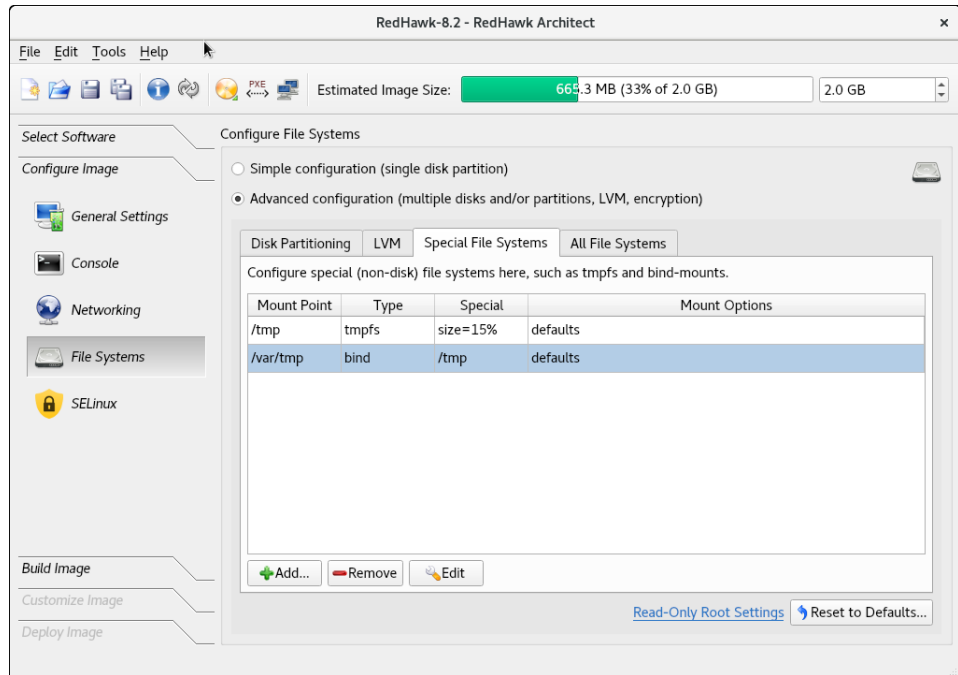


Figure 1-35 Example Special File Systems page entries

The All File Systems tab is used to view all the file systems to be configured on the target system. Both disk and special file system entries are listed. The following figure

shows entries corresponding to the examples above.

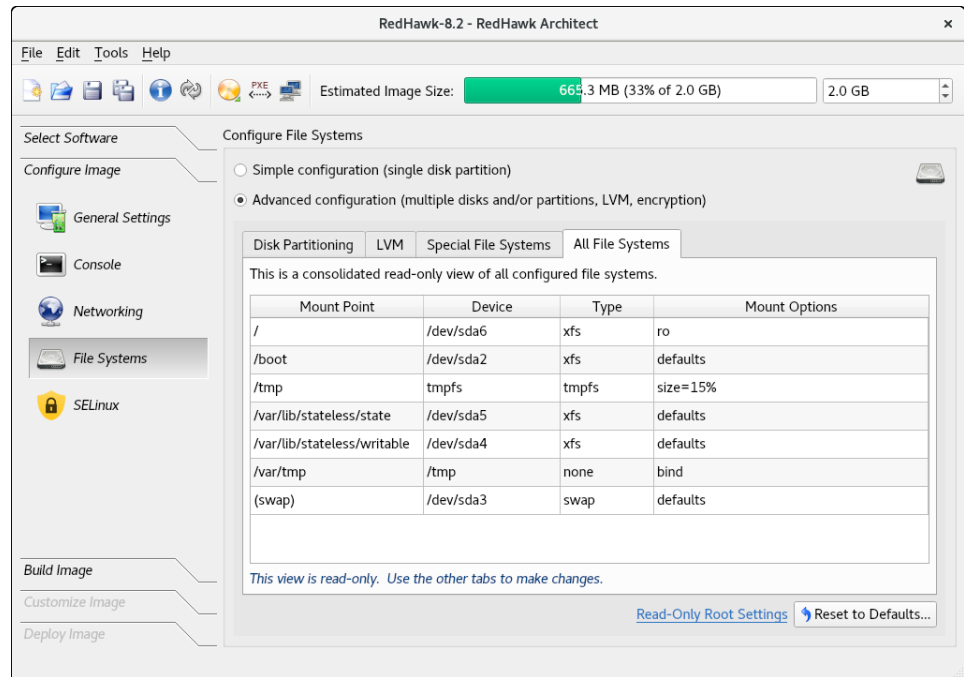


Figure 1-36 Example All File Systems list

Configuring SELinux

Click on the SELinux button of the Configure Image toolbox to display the Configure SELinux page.

The security-enhanced option is disabled in RedHawk but it can be enabled in the permissive or enforcing mode as shown below.

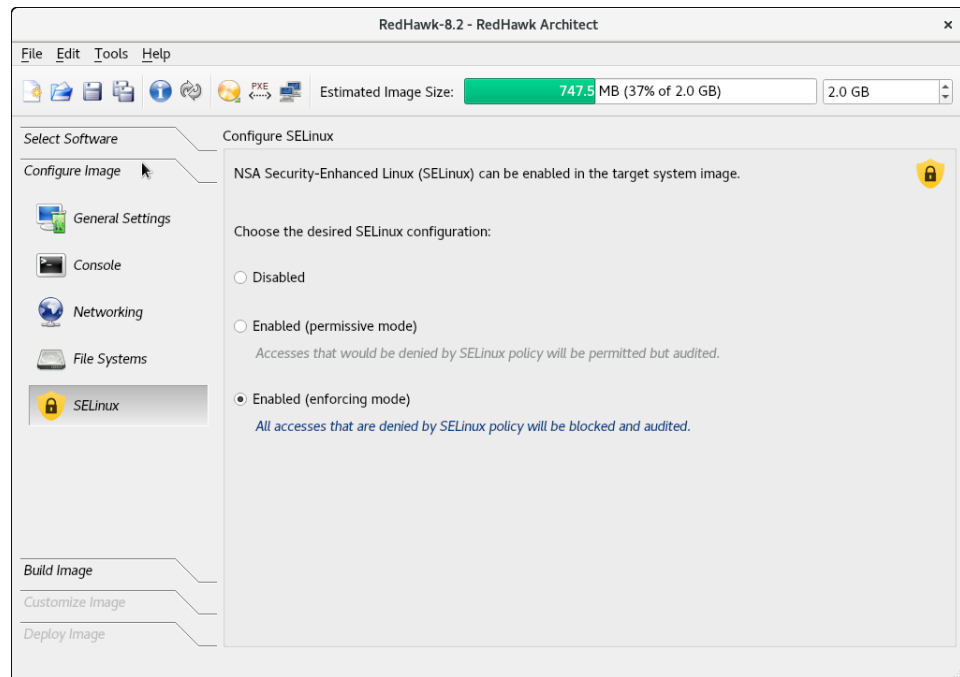


Figure 1-37 SELinux enabled in the enforcing mode

Building an Image

To build the target system image by installing the selected software, select **Build Image** from the toolbox on the left side of the RedHawk Architect main window.

The Build Image page shown in the following figure displays.

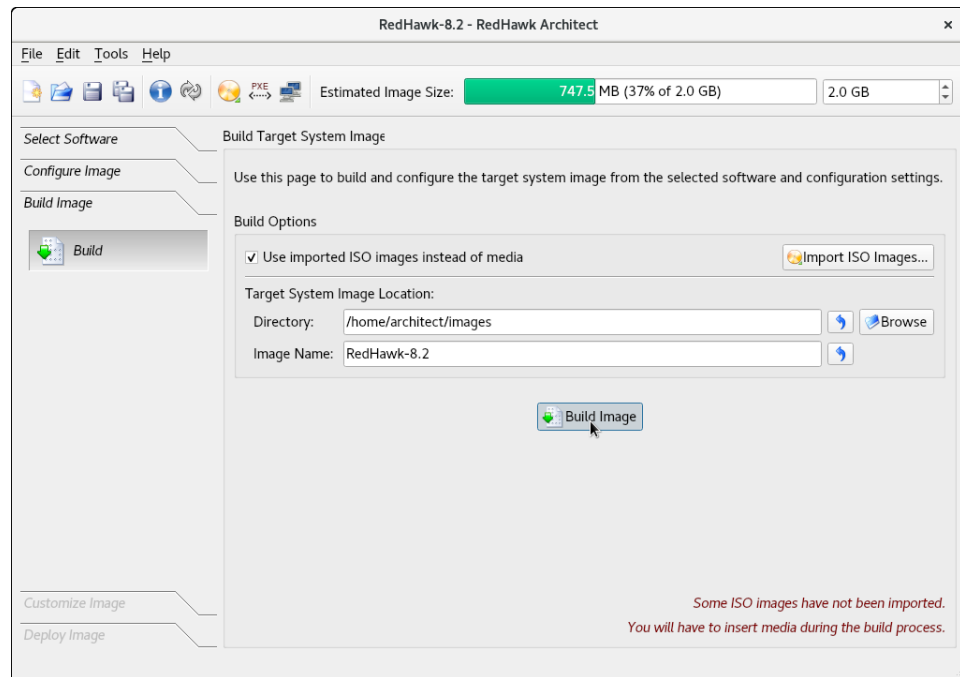


Figure 1-38 Build Image Page

Choose a directory in which to build the target system image and enter it in the **Directory** field, or click on the **BROWSE** button to display a file browser from which to choose.

NOTE

Do not use **/tmp** as the target directory. Packages like “tmp-watch” might remove files that have not been accessed in a certain number of days, thereby sabotaging the image directory.

Choose a name for the target system image and enter it in the **Image Name** field.

NOTE

Make sure that the directory you specify has enough free disk space to hold one or more target system images, each of which can be several gigabytes in size.

Click on the **Build Image** button to begin the build process. The rest of this section assumes that you have *not* previously imported the ISOs from their respective media by clicking on the **Import ISO Images...** button or selecting **Media ISO Manager** in the **Tools** menu. Advanced users may wish to do that to avoid inserting DVD or CD media repeatedly. See “Chapter 3: Importing ISO Images” for more information.

Dialogs are presented to guide you through the process of installing the software into the image. For example, you will be prompted to insert various DVD or CD media, as shown in the following figure. Follow the directions to load the media, then click **OK** to begin.

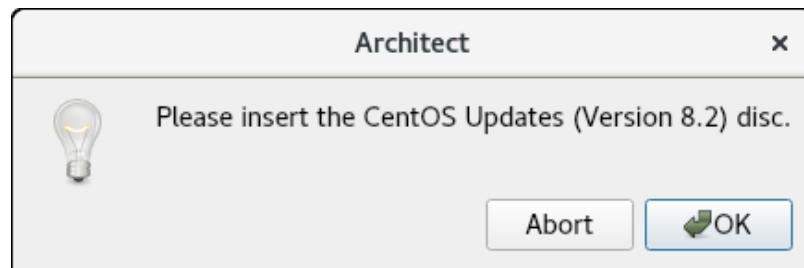


Figure 1-39 Build Prompt to Insert CentOS Updates Media

NOTE

The 8.2 system release installation discs, both CentOS and Red Hat, are created using dual layer technology and require a drive that is dual layer-capable to read the data correctly.

When **OK** is selected, the CentOS installation begins. The **Build Image** screen overlays the **RedHawk Architect** main window and tracks the progress, as shown in the following figure.

Clicking **Abort** at any time in the build process aborts the build. A confirmation message then displays and you must click on the **Close** button to close the message box and reactivate the **RedHawk Architect** main window.

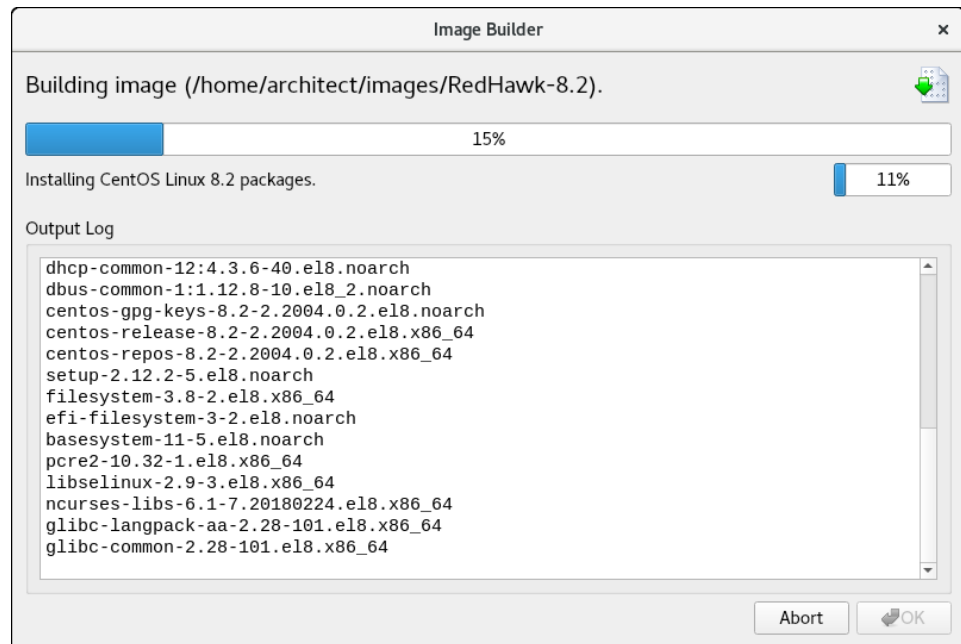


Figure 1-40 Status of CentOS Installation

An overall progress bar at the top of the Image Builder screen shows the progress of the entire build; the entire build will be complete once this progress bar is full.

The current stage of the build is listed immediately underneath the overall progress bar, along with a smaller stage-specific progress bar; the current stage of the build will be complete once this stage-specific progress bar is full, and it will reset for the next stage.

An Output Log status area in the lower half of the dialog shows the detailed output that is generated during the entire build, including any error messages generated by the build process. Note that critical error messages result in pop-up error dialogs with which you can interact.

Abort

Click on this button to abort the build. A confirmation dialog displays allowing you to confirm or decline aborting the build process.

OK

Once the build is completed or aborted, click on the OK button to close the Build Image screen and reactivate the RedHawk Architect main window.

When the CentOS installation is complete, the dialog shown in the following figure appears.



Figure 1-41 Build Prompt to Insert RedHawk Media

Load the RedHawk Linux media, then click **OK**. The RedHawk installation begins and the Image Builder screen tracks the progress, as shown below.

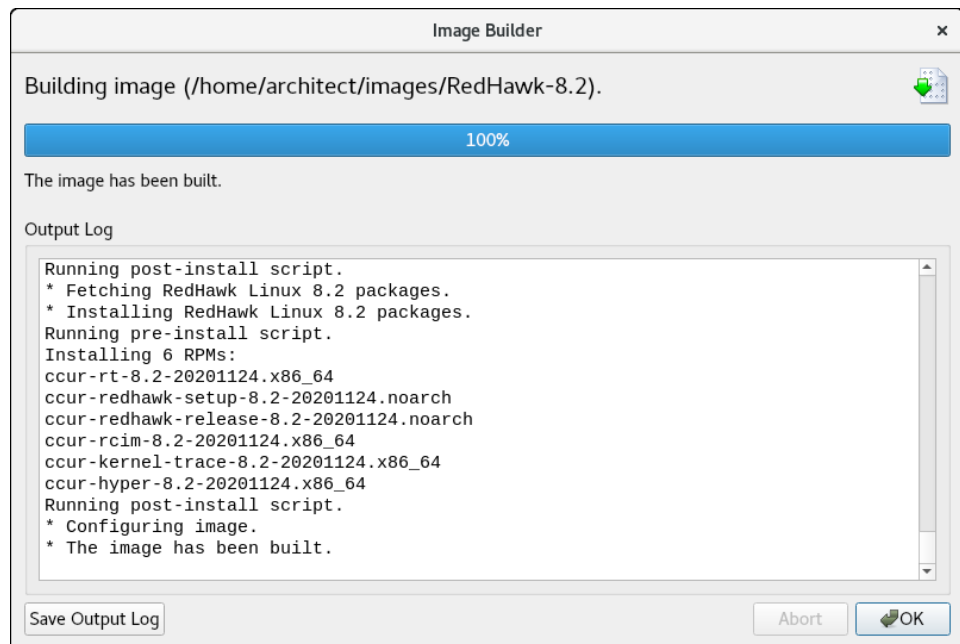


Figure 1-42 Status of RedHawk Installation

The same steps as above will be repeated for any optional software selected during the **Select Software** step; a prompt will ask the user to insert the product disc and the software will be installed in the target's build image.

Customizing an Image

To further customize the target system image, select **Customize Image** from the toolbox on the left side of the RedHawk Architect main window. This allows you to customize the following groups:

- Software Updates
- Additional RPMs

- System Services
- Kernel
- File Manager
- Chroot Shell
- Image Cleanup

Each of these customizations will be fully described in the following sections.

NOTE

Image customizations are *not* saved in the session, and will not be automatically re-applied to future images built from the session.

Software Updates

To install RedHawk and NightStar updates into the target system image, click on Software Updates in the Customize Image toolbox. The Software Updates page appears, as shown in the following figure.

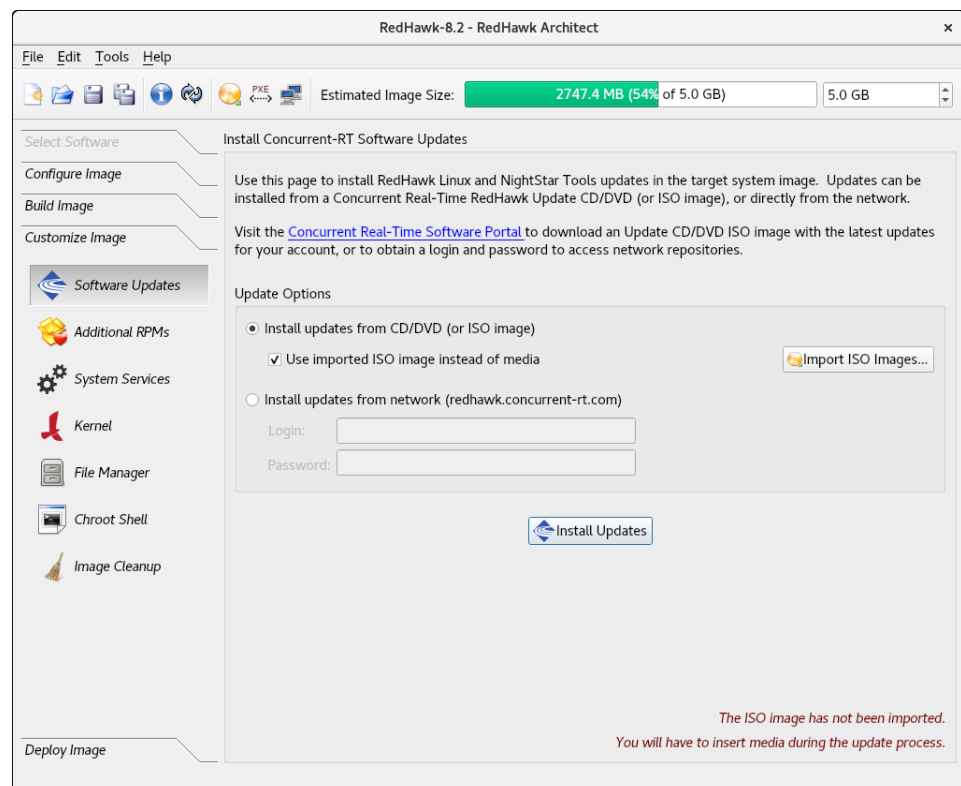


Figure 1-43 Software Updates Page

Installing updates can be done from local media (DVDs or ISO images) or directly over the network if the host system is connected to the Internet.

Select Install updates from CD/DVD (or ISO image) if you wish to use local media; then press the Install Updates button and you will be prompted to insert the media.

Select Install updates from network instead of media if you wish to download updates via the Internet. You will need to enter your site's assigned login and password to be granted access to the RedHawk Updates repositories, and you will also need an active maintenance subscription.

Follow the instructions as they are presented. You should see something similar to the following dialog displayed once all updates have been successfully installed.

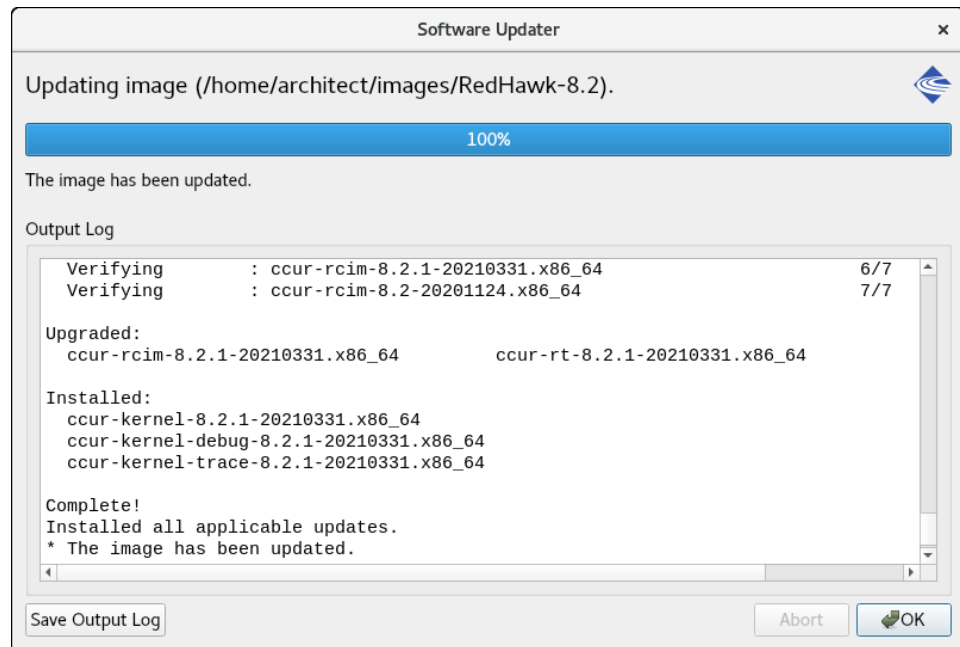


Figure 1-44 Software Updater Dialog

Additional RPMs

To install additional RPMs into the target system image manually, click on Additional RPMs from the Customize Image toolbox.

The Install Additional RPMs page appears, as shown in the following figure.

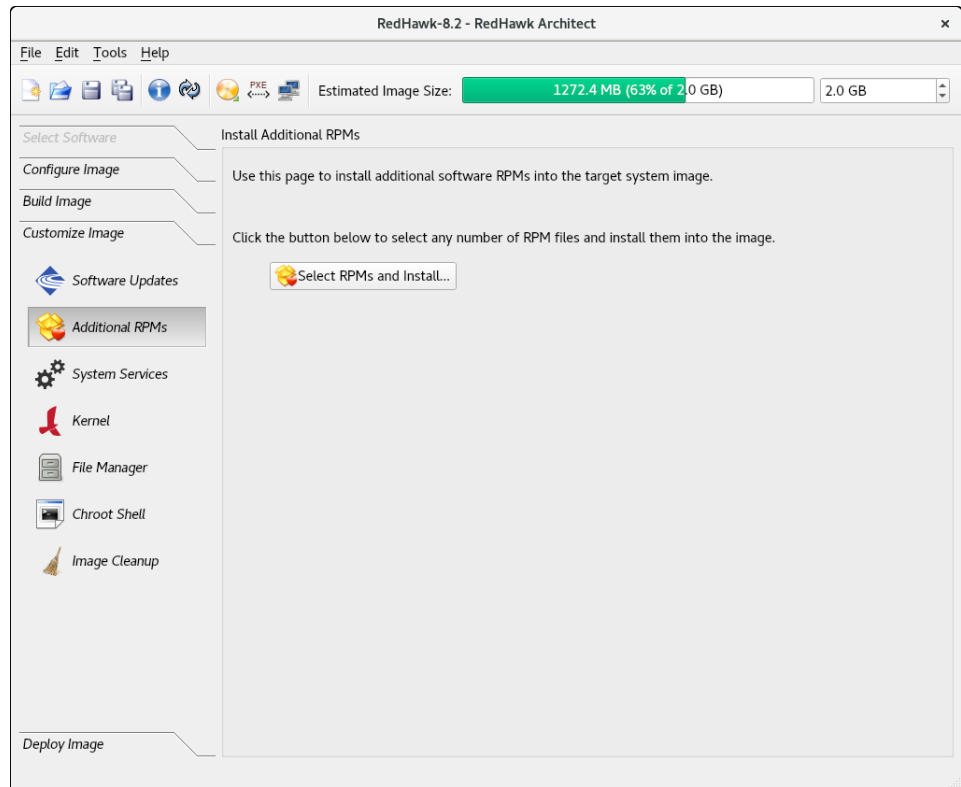


Figure 1-45 Install Additional RPMs Page

The Install Additional RPMs page can be used to locate RPM files on the host system and then easily install them into the target system image. Note that the interface supports multiple selection; if you have a set of RPMs that have dependencies upon each other you will need to select all of the RPMs simultaneously to have them properly installed together into the target system image.

Installing Board Support Packages

Concurrent Real-Time provides *Board Support Packages* (BSPs) for several supported SBCs. These BSPs are distributed as RPMs that may be installed in an image using the Additional RPMs page as described above. Contact Concurrent Real-Time (support@concurrent-rt.com or 1-800-245-6453) for information on how to obtain BSPs for a particular SBC.

System Services

To customize the settings of the system services that are present in the target image, click on **System Services** in the **Customize Image** toolbox. The **System**

Services page appears, as shown in the following figure. Note that the actual list of system services shown depends on the set of packages installed in the target image.

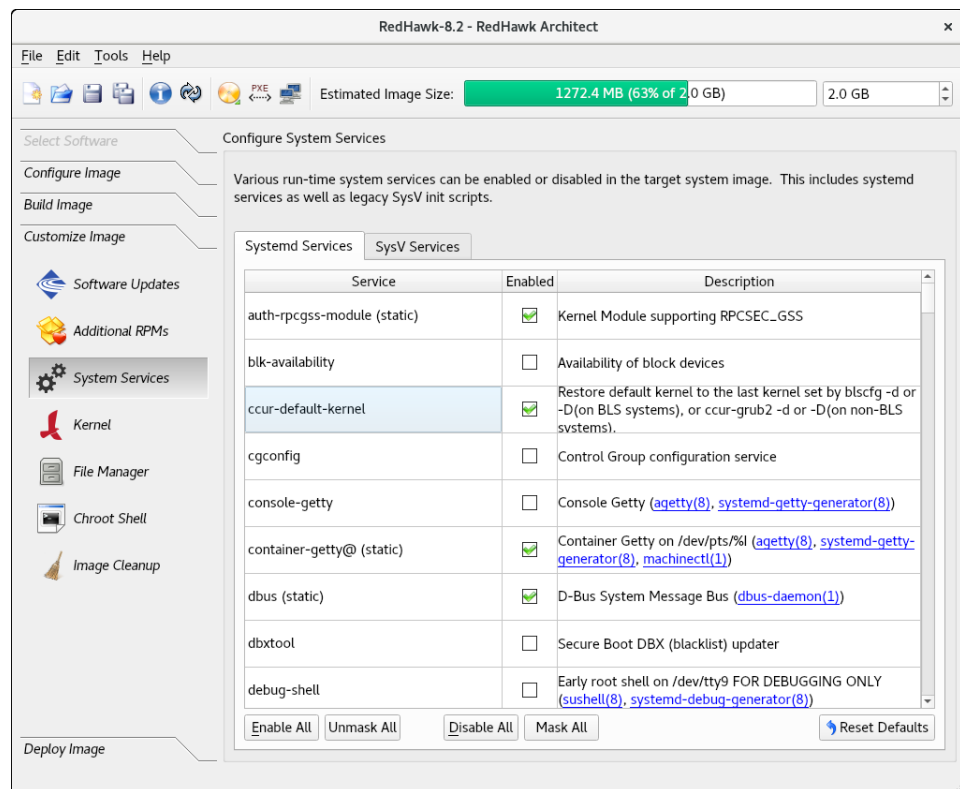


Figure 1-46 System Services Page

There are tabs for both modern Systemd Services and also legacy SysV Services. Only the system services that are actually present in the built target system image are available for customization on the System Services page.

Note that any changes made on the System Services page take effect in the target system image immediately.

Kernel

By default you can choose to boot a standard RedHawk kernel in your target image. However you may also wish to customize the kernel to include additional components or possibly to exclude existing components. In order to customize the kernel, you must select the RedHawk kernel source software when configuring the target.

To customize kernel settings for the target image, click on Kernel from the Customize Image toolbox.

The Customize Kernels page appears, as shown in the following figure.

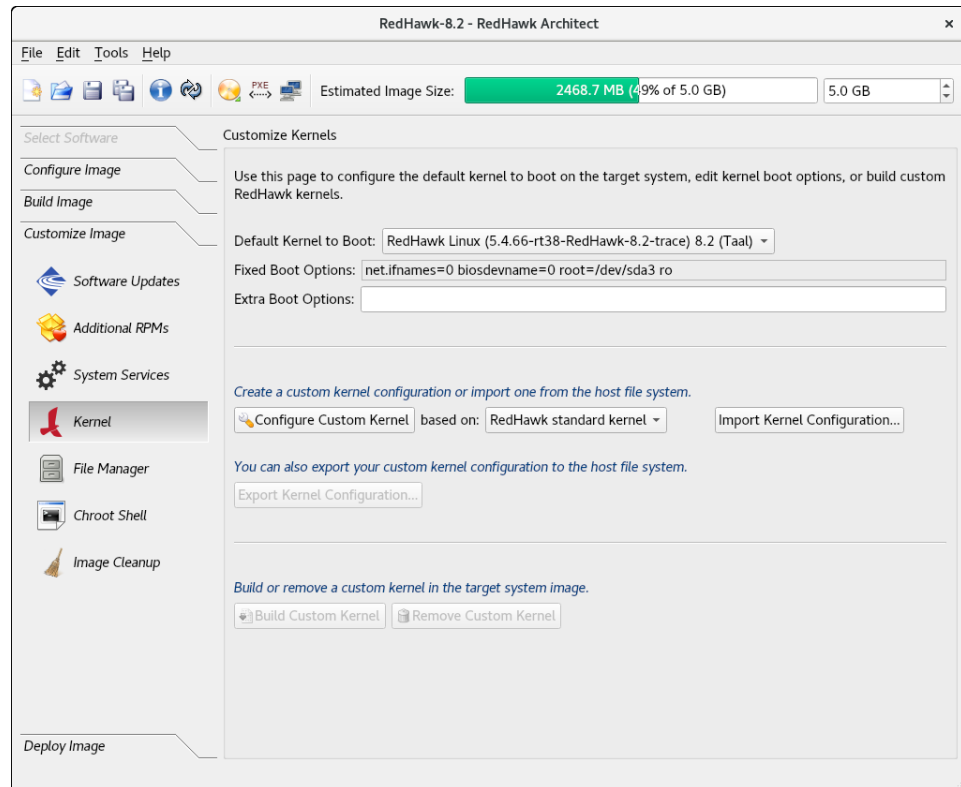


Figure 1-47 Customize Kernels Page

The Customize Kernels page allows you to perform different functions with the kernel configuration in the target image.

The Default Kernel to Boot pull-down menu allows you to choose which installed kernel should be the default kernel that boots in the target image. Any change made to this setting is customized in the target system image immediately.

The Fixed Boot Options text area displays the required kernel boot options for the selected kernel; these kernel boot options are fixed and may not be changed by the user.

The Extra Boot Options text field displays optional kernel boot options for the selected kernel; these kernel boot options are fully customizable by the user.

At the bottom of this page there are functions to configure and build custom kernels for the target image. These functions will be described in the following sections.

Note that only one custom kernel configuration, and therefore one custom kernel, can be associated with a specific target system image at any given time.

Federal Information Processing Standards (FIPS)

To enable support for FIPS in the kernel, the boot option `fips=1` must be set in the Extra Boot Options text field of the Customize Kernels page. This must be set for each kernel to be booted on the target.

NOTE

The 8.2.1 or a later update is required on the target system for FIPS to work on the 8.2 release. However, the 8.0 release can be used without any updates.

NOTE

A separate `/boot` partition is required if the target is based on the 8.0 release.

NOTE

FIPS is not supported for the PXE diskless deployment method.

If the installer methods (USB Installer or DVD Installer or PXE Installer) will be used to deploy the target image, there is nothing more to do. The rest of the configuration is done by Architect.

If the USB Devices or the Virtual Machines deployment methods will be used, these additional steps must be taken on the target system:

1. Boot the target with a kernel that has the extra boot options for FIPS support.
2. If the target system image is based on the 8.0 release, then the `fips-finish-install` script must be patched with the following command:

```
sed -i 's/dracut -f$/dracut -f          \
--regenerate-all/' /usr/bin/fips-finish-install
```

3. Run the following command:

```
fips-mode-setup --enable
```

4. Reboot the target with a kernel with FIPS support.

Configure Custom Kernel

The Configure Custom Kernel button begins the process of creating a custom kernel configuration. The custom kernel configuration is based upon the kernel configuration that is selected in the drop-down menu that is immediately to the right of the Configure Custom Kernel button.

The choices in the drop-down menu are: RedHawk standard kernel, RedHawk trace kernel, RedHawk debug kernel and Custom kernel (available once a custom kernel configuration has been imported or configured). The first three create new configurations based on the configurations of the standard RedHawk kernels.

The Custom kernel choice bases the new configuration on the current custom kernel configuration that is associated with the image; thus, the Custom kernel choice can be used to further customize a configuration that you have already customized or imported.

Pressing the Configure Custom Kernel button will bring up two different dialog windows. The first dialog window displays overall configuration progress status, as shown in the following figure.

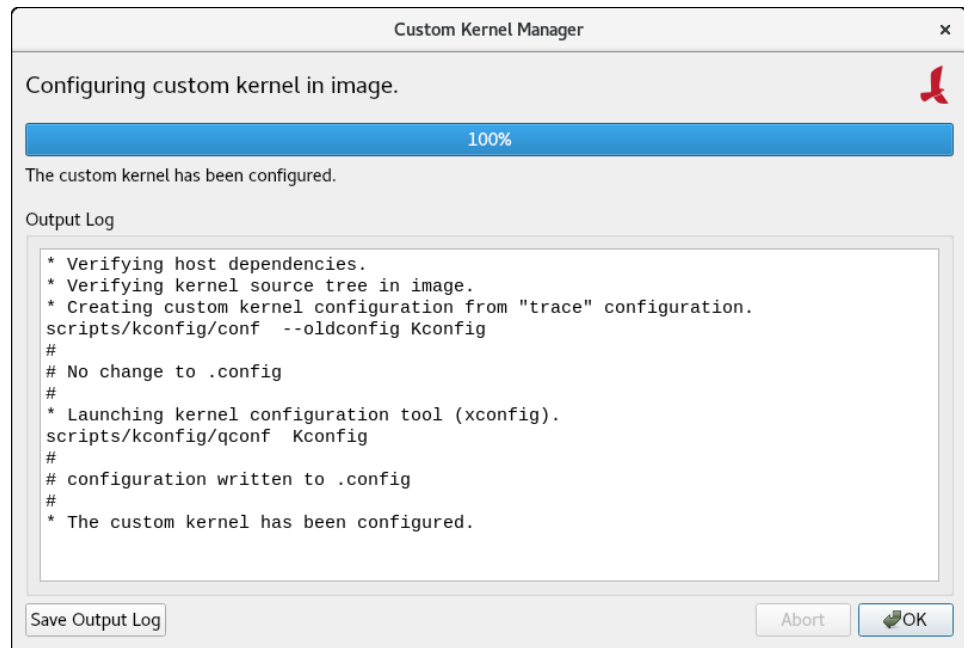


Figure 1-48 Custom Kernel Dialog

This window shows the status of running the `ccur-config` command in the target system image kernel source directory.

The `ccur-config` command will eventually bring up the Linux Kernel Configuration window to customize the kernel, as shown in the following figure.

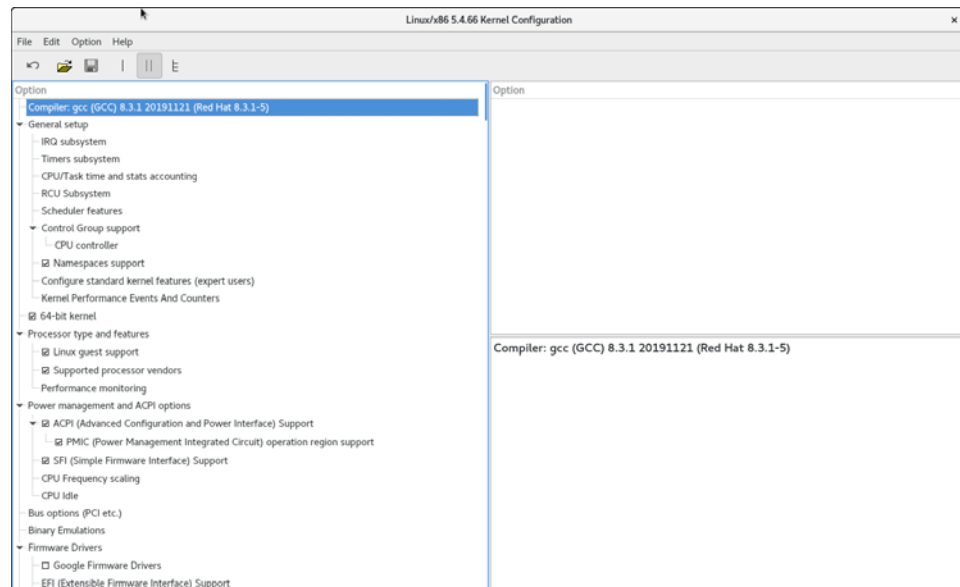


Figure 1-49 Linux Kernel Configuration Dialog

This window allows you to customize almost any aspect of the custom kernel configuration. It is expected that users who are performing this step have a thorough understanding of Linux kernel configuration.

Note that you must **Save** the kernel configuration before you exit the Linux Kernel Configuration window. Failure to **Save** the configuration will result in an error being displayed in the Custom Kernel Manager dialog window and no changes to the custom kernel configuration will be made.

NOTE

Certain compilation related RPMs must be installed on the host system in order to successfully configure and build a custom kernel (e.g. `make`, `gcc`). If any of these RPMs are missing you will be presented with a dialog detailing which RPMs must first be installed on the host system before you can proceed.

Import Kernel Configuration

The Import Kernel Configuration button allows you to choose a Linux kernel configuration file on the host system and import it to become the custom kernel configuration in the target image.

Note that once a custom kernel configuration has been imported you can further customize it by using the Configure Custom Kernel button and selecting the Custom kernel to base the configuration on.

Export Kernel Configuration

The Export Kernel Configuration button allows you to copy the target's current custom kernel configuration to the host system.

Compile Custom Kernel

The Build Custom Kernel button allows you to build and install a complete custom kernel in the target image. You must first have created a custom kernel configuration, either by using the Configure Custom Kernel button or by using the Import Kernel Configuration button.

Building a custom kernel compiles each file that comprises the Linux kernel and this process can take quite a bit of time to complete. Once you start the process, you will see the Custom Kernel Manager dialog appear, as shown in the following figure and it will describe the entire process.

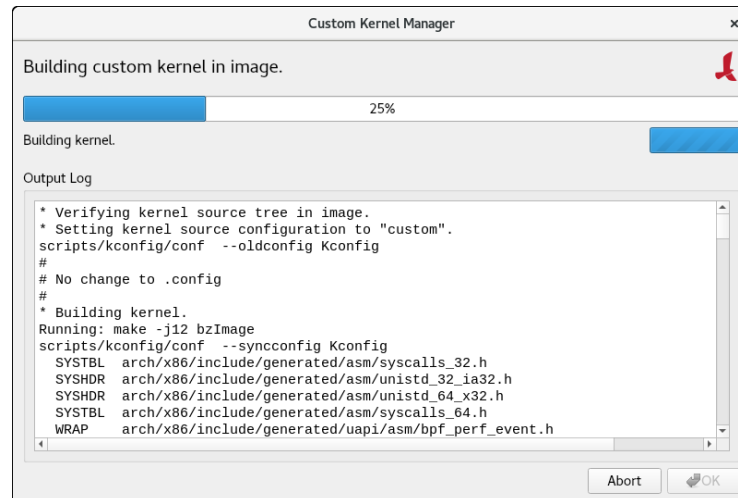


Figure 1-50 Initial Build Progress

Initially **ccur-config** will be invoked and once that completes the kernel build stages will begin, as shown in the following figure.

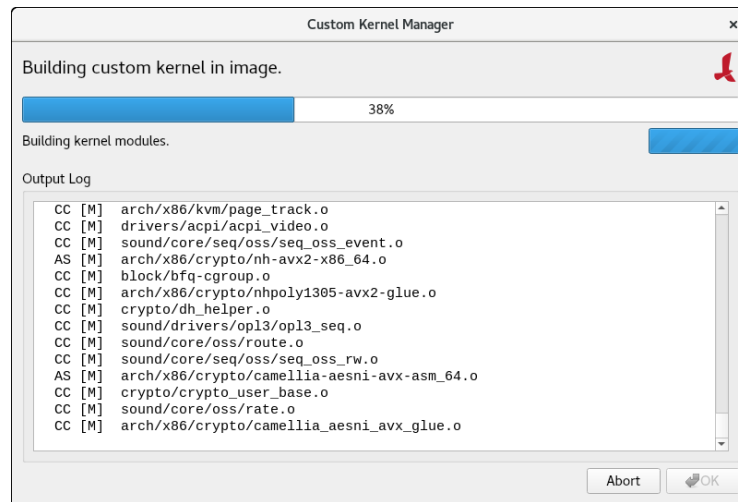


Figure 1-51 Kernel Build Stages

Finally, once the entire build and install process is complete, the kernel source tree will be cleaned to free up the temporary space used to build the kernel. At this point the entire build process will be complete, as shown in the following figure.

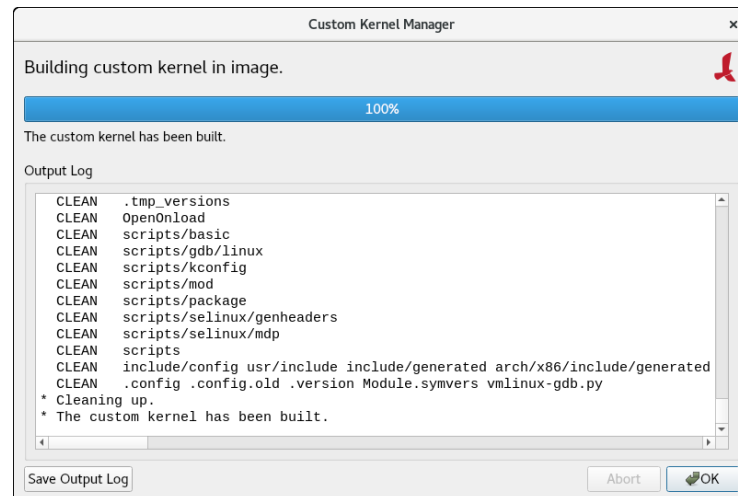


Figure 1-52 Kernel Build Complete

The custom kernel automatically becomes the default kernel to boot. If this choice is not desired, change the kernel to boot using the **Kernel To Boot** area as described above.

Remove Custom Kernel

The Remove Custom Kernel button allows you to remove the current custom kernel from the target image. This will remove the entry in `grub.conf` as well as all of the associated kernel files in the image.

Note that the custom kernel configuration itself is not removed. Thus, it is still possible to build a custom kernel based on the current custom kernel configuration that still remains in the target image.

File Manager

To copy files to and from the host file system and the target system image, click on File Manager from the Customize Image toolbox. Manage Files In Image page appears, as shown in the following figure.

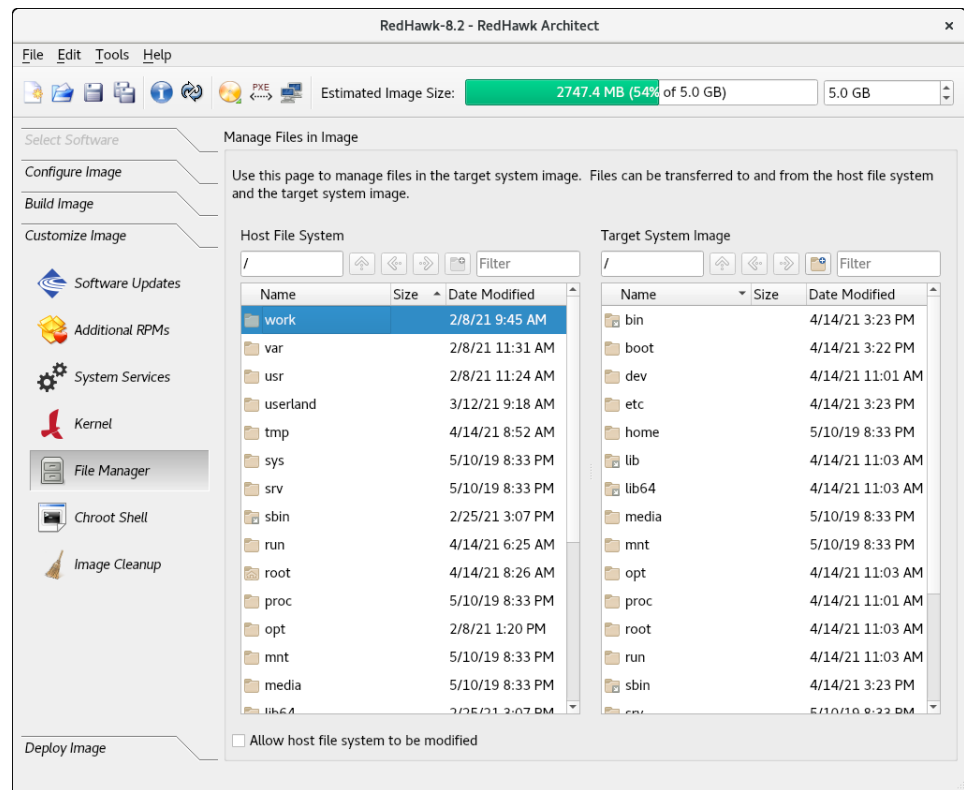


Figure 1-53 Manage Files In Image Page

The buttons just below the Host File System and Target System Image headings help you traverse directories in the host and target system, create new directories and do file name searches. To see a menu of the file system operations supported, right click while in either the target or host system boxes.

The default mode does not allow the host file system to be modified. To allow modifications, click on the bottom left of the page on the box labeled Allow host file system to be modified.

Chroot Shell

To customize the target system image manually, click on the Chroot Shell from the Customize Image toolbox. The Customize Image in Chroot Shell page appears, as shown in the following figure.

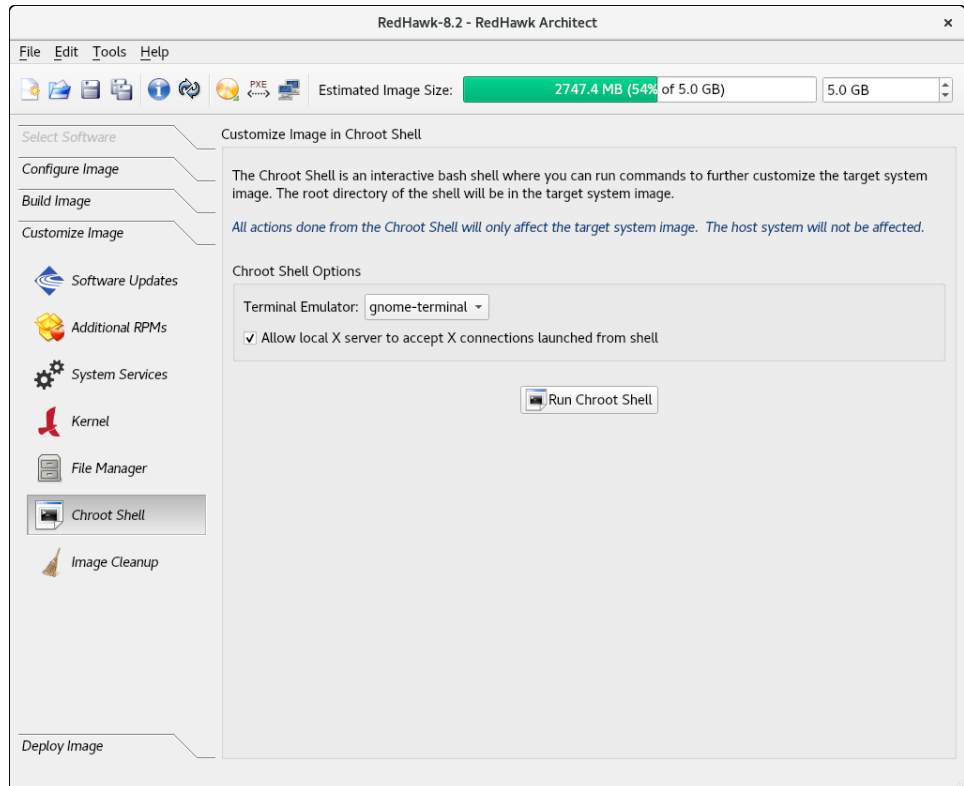


Figure 1-54 Chroot Shell Page

From this toolbox you can open a “chroot” shell in a terminal window. Select the type of terminal from the dropdown and click on the Run chroot Shell button. A terminal screen opens, as shown in the following figure.

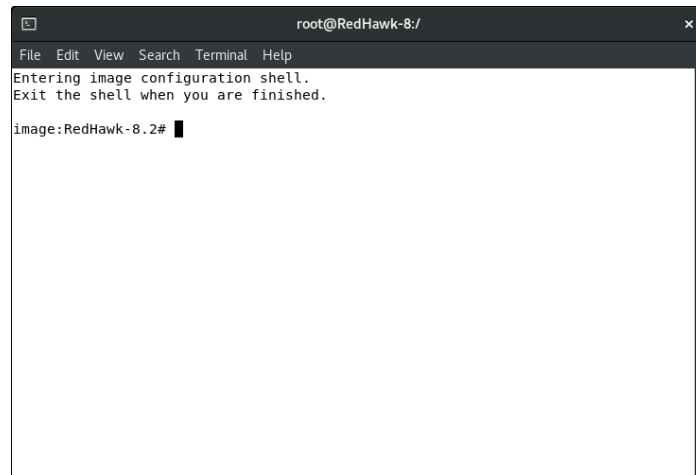


Figure 1-55 chroot Shell

This provides a shell with the root directory being the target system image directory. All changes made to system files (including software installed or removed) will be done in the target system image directory only. The host's root file system will not be affected.

Exit the shell when changes are complete.

Image Cleanup

You may reduce the size of the target system image by removing various types of files that may be unnecessary for the image. To remove unnecessary files from the image, click on **Image Cleanup** in the **Customize Image** toolbox. **Clean up Image** page appears, as shown in the following figure.

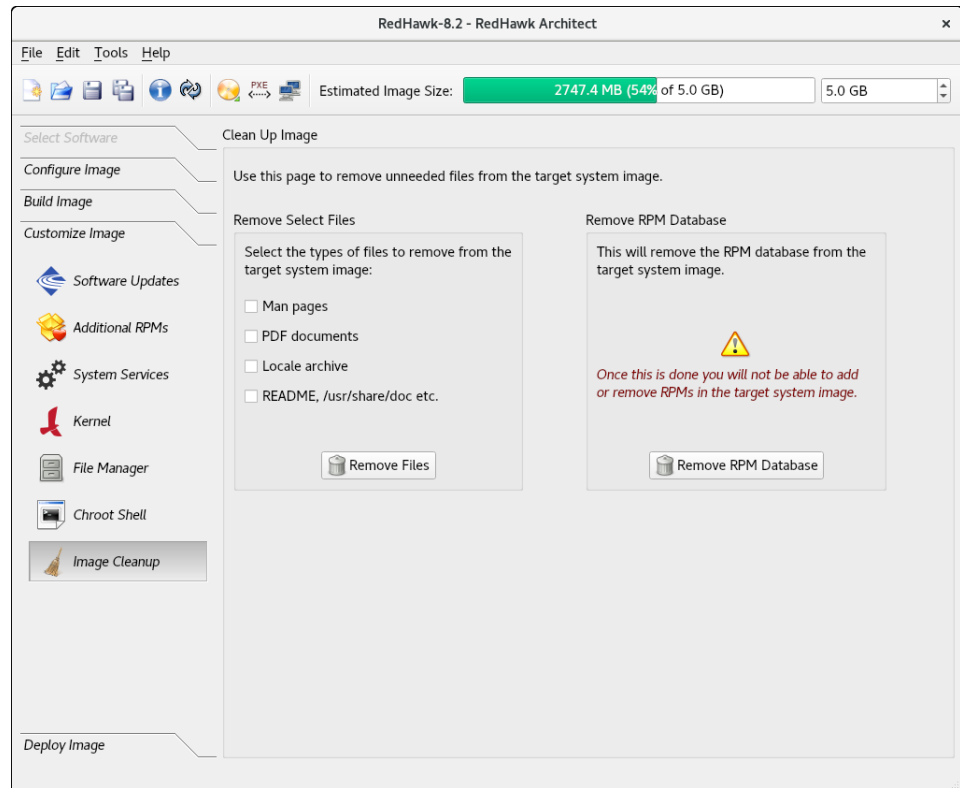


Figure 1-56 Clean Up Image Page

Select the types of files to remove from the target system image and click the **Remove Files** button.

To remove the RPM database from the file system click the **Remove RPM Database** button. Once this is done you will lose all ability to manage RPMs in the image. This cannot be undone. Only do this once you are sure you do not have to add or update any more RPMs in the image.

Deploying an Image

Target system images can be deployed onto target boards in several different ways with RedHawk Architect.

- USB devices can be directly flashed with the target system image. This includes USB drives and also CompactFlash cards in CompactFlash-to-USB adapters. These devices can then be inserted into a target board and the board will boot the image upon a restart. See “Deploying to USB Devices” on page 1-51 for more information.
- A USB drive installer can be created with the root file system on it. Architect creates a bootable installation USB drive that will boot on the target and install the root file system onto the target board’s local media.

Once complete, the USB drive is removed and the board will boot the image upon a restart. See “Installing via USB drive” on page 1-54 for more information.

- DVD media installers can be created with the target system image on it. Architect creates a bootable installation DVD that will boot on the target and install the root file system onto the target board's local media. Once complete, the DVD is removed and the board will boot the image upon a restart. See “Installing via DVD media” on page 1-58 for more information.
- RedHawk Architect can deploy the target system image over the network. It can deploy an installer that will install the target system image onto the target board's local media, or it can deploy the target system image via NFS for fully diskless booting. See “Installing via PXE over a Network” on page 1-60 for more information on network installation, and see “Booting Diskless via PXE over a Network” on page 1-62 for more information on diskless booting.
- RedHawk Architect can deploy the target system image directly to a virtual machine image that can be booted via QEMU. See “Deploying to Virtual Machine” on page 1-72 for more information.

In addition to deploying target system images to target systems, Architect also supports deploying target system images to *virtual machine images*, which can be booted in virtual machines running directly on the host. Using this feature, it is possible to deploy target system images without the use of any target hardware.

The UEFI firmware target configuration is currently supported by all deployment methods. In the **USB Device** and **Virtual Machine** deployment methods, the **Configure for UEFI firmware** box must be set if the intended target system utilizes UEFI firmware. In the other deployment methods (PXE, USB Installer and DVD installer), there is no UEFI configuration box as those methods work with either UEFI or BIOS systems.

Deploying to USB Devices

To copy a target system image to a USB device, select **Deploy Image** from the toolbox on the left side of the RedHawk Architect main window and click on the **USB Devices** button.

This will display the Deploy to USB Devices page, as shown in the following figure.

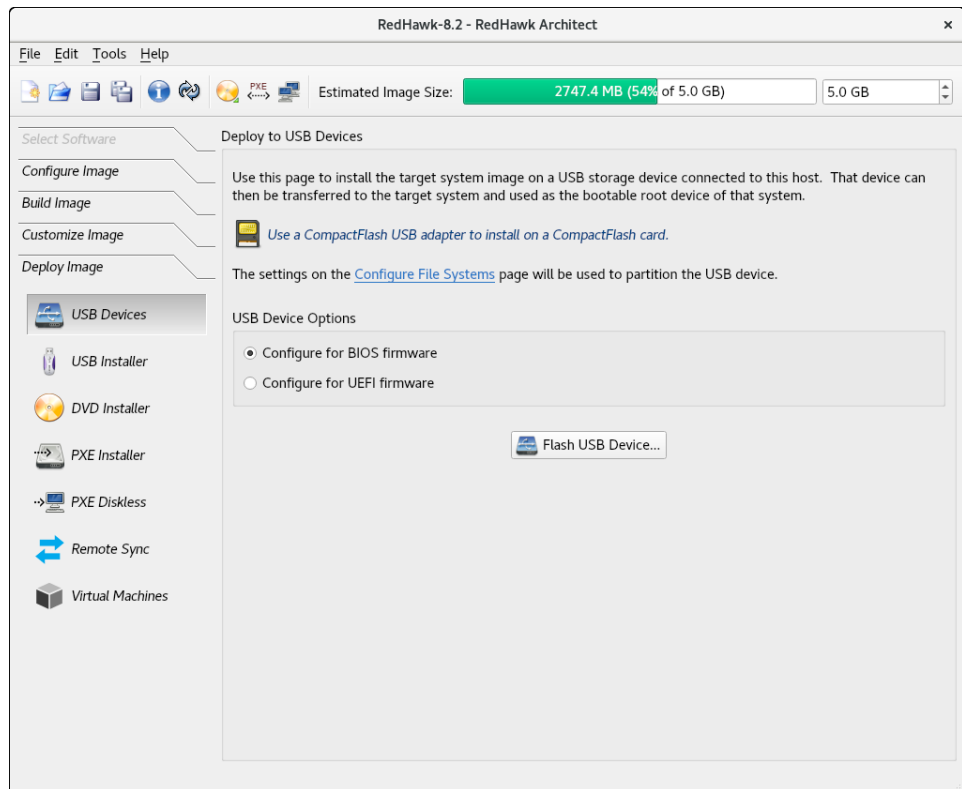


Figure 1-57 Deploy to USB Devices Page

The Flash USB Device... button allows you to copy a target system image onto a USB flash device (e.g. a standard USB Flash Drive or a CompactFlash that is connected directly to the host machine via a USB-to-CompactFlash adapter). Note that IDE/SATA CompactFlash adapters are not supported at this time.

Make sure to select the Configure for UEFI firmware check box if the intended target system utilizes UEFI firmware.

NOTE

CompactFlash devices and USB drives can be bought inexpensively at many retail stores that sell computer accessories. Note that the duration of the flashing process depends upon the performance rating of the specific CompactFlash device or USB drive. It is recommended to use CompactFlash devices or USB drives that have a minimum of a 40MB/s read/write performance rating.

Pressing the Flash USB Device... button will begin copying the target root file system onto the USB device. The host system will be scanned for attached USB flash storage

devices. If multiple devices are found a choice will be presented to the user, otherwise the sole device found will be selected by default.

Once a device is found or chosen, a confirmation dialog similar to the following will appear:



Figure 1-58 Flash Device Confirmation

Press OK to confirm the operation and then the copy will begin, as shown in Figure 1-59.

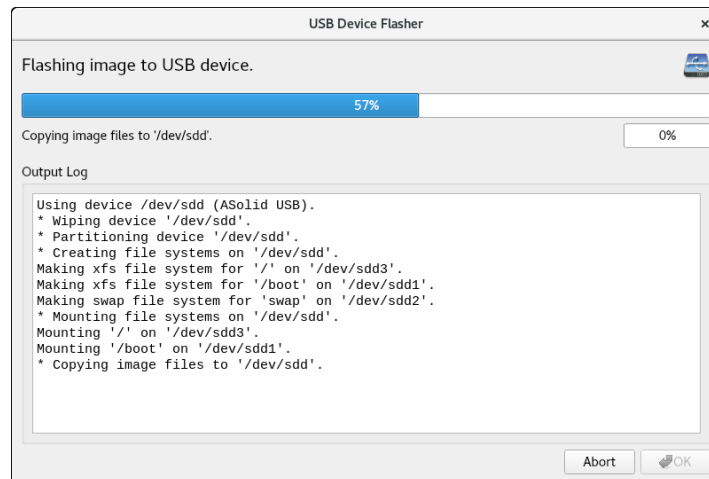


Figure 1-59 Flash Copy In Progress

Note that no initial check is made to determine whether the image will fit onto the size of the selected USB device. If the copy fails because of insufficient space, an error message will be displayed

If the USB device is large enough to hold the image, and no other error occurs during the copy, a success dialog will be presented, as shown in Figure 1-61.

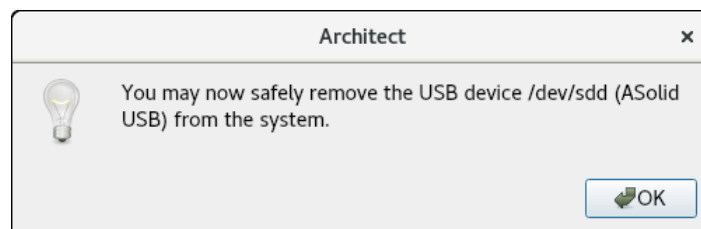


Figure 1-60 Device Removal Notification

Remove the USB device if desired and then click **OK** to continue.

You will now be presented with a final dialog indicating that the transfer is complete.

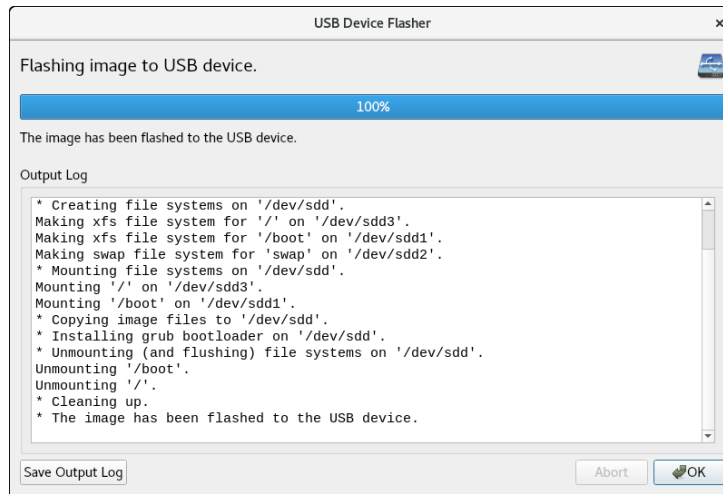


Figure 1-61 Flash Copy Completed

Installing via USB drive

To create a bootable USB drive that will install the target system image into a target system, select **USB Installer** from the toolbox on the left side of the RedHawk Architect main window.

This will display the Deploy via Installation USB Drive page, as shown in the following figure.

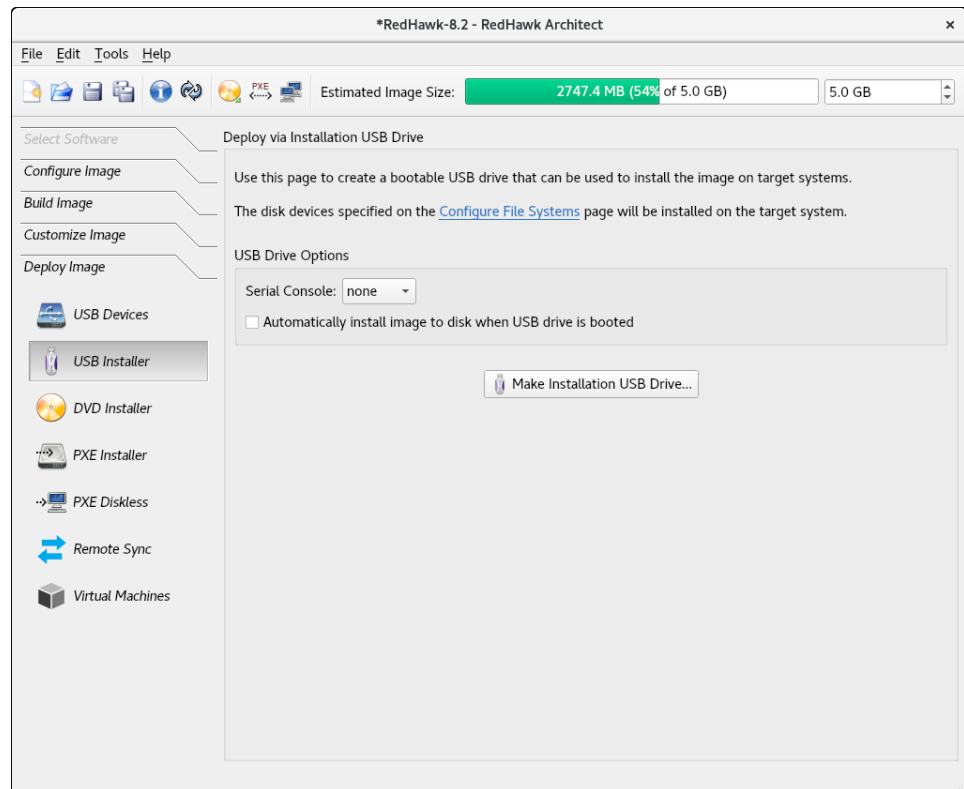


Figure 1-62 Deploy via Installation USB Drive Page

Press the Make Installation USB Drive... button to write a bootable installer image to an attached USB drive.

Choose the Serial Console setting that the target system will use for communicating with the host. If set to none the target will default the console to the VGA display.

Check the box labeled Automatically install image to disk when USB drive is booted to create a USB drive that will install the target system image onto a target board's local disks without any prompting or user interaction.

NOTE

This will destroy any data on the target system's local disks and therefore automatic installations should be used carefully; however, it is useful on systems without an attached console display or configured and connected serial console.

Also note that if there is more than one disk on the target system, Architect will take an educated guess at the most appropriate disk to use based on your configuration. For example, if your configured an `sda` disk, it will choose a SATA disk over a NVMe disk. Nevertheless, it is suggested that you use the interactive installation method if you do not want to run the risk of over-writing a disk.

In an automatic installation you are still given 10 seconds to intervene. If you hit any key during the 10 seconds you will be presented with an interactive menu.



Figure 1-63 Automatic installation on target without user interaction

The default mode is an interactive installation. In this mode, the installation on the target will stop at the page shown below until a choice is entered. Press ENTER to continue with the interactive installation.

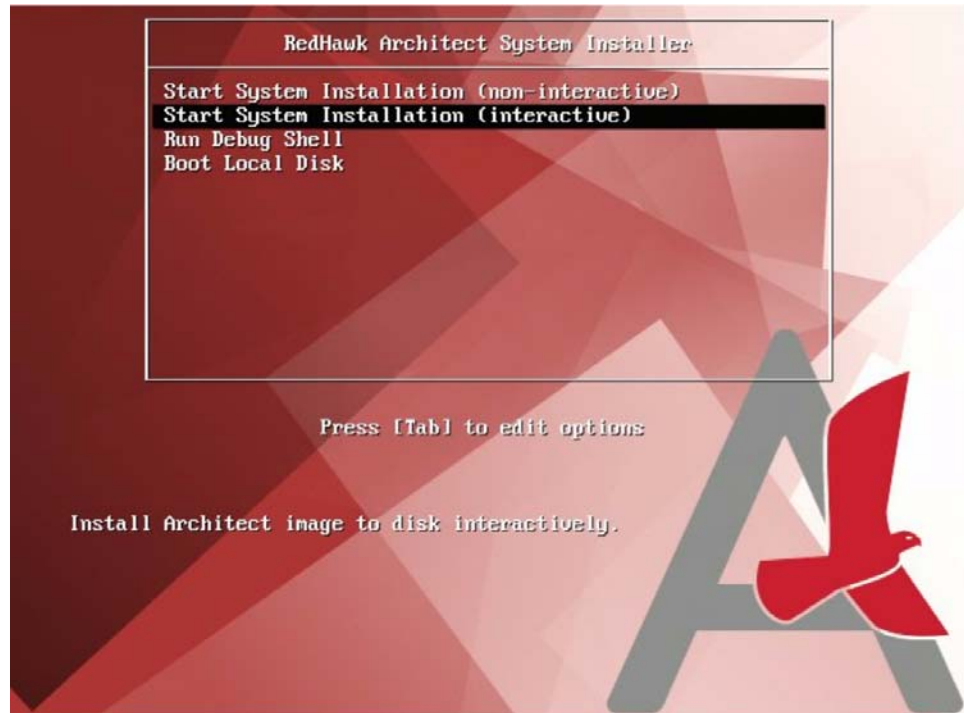


Figure 1-64 Interactive installation on Target

In an interactive installation you will be able to map disks configured in Architect with the physical disks on the target system.

The screen that follows shows two disks were configured in Architect but three disks were found on the target system. In this example, the two disks configured in Architect, **sda** and **sdb**, have been reassigned from the mapping suggested by Architect.

```
Would you like to change any disk assignments? (y/n) [n] y
Which disk assignment would you like to change? (sda/sdb) sda
Choose a local disk to use for "sda":
* 1) 465.8G ATA WDC WD5003ABYX-0 (/dev/sda)
  2) 1.8T ATA ST2000NM0008-2F3 (/dev/sdb)
  3) 29.3G ASolid USB (/dev/sdc)
: 2

The following disk assignments will be used for this installation:

sda => 1.8T ATA ST2000NM0008-2F3 (/dev/sdb)
sdb => 465.8G ATA WDC WD5003ABYX-0 (/dev/sda)

Would you like to change any disk assignments? (y/n) [n] y
Which disk assignment would you like to change? (sda/sdb) sdb
Choose a local disk to use for "sdb":
* 1) 465.8G ATA WDC WD5003ABYX-0 (/dev/sda)
  2) 1.8T ATA ST2000NM0008-2F3 (/dev/sdb)
  3) 29.3G ASolid USB (/dev/sdc)
: 3

The following disk assignments will be used for this installation:

sda => 1.8T ATA ST2000NM0008-2F3 (/dev/sdb)
sdb => 29.3G ASolid USB (/dev/sdc)

Would you like to change any disk assignments? (y/n) [n]
```

Figure 1-65 Remapping of configured disks to physical disks on target

When you have finished with the disk assignments, the installation will resume without further user interaction.

Installing via DVD media

To create a bootable DVD media that will install the target system image into a target system, select **DVD Installer** from the toolbox on the left side of the RedHawk

Architect main window. This will display the Deploy via Installation DVD page, as shown in the following figure.

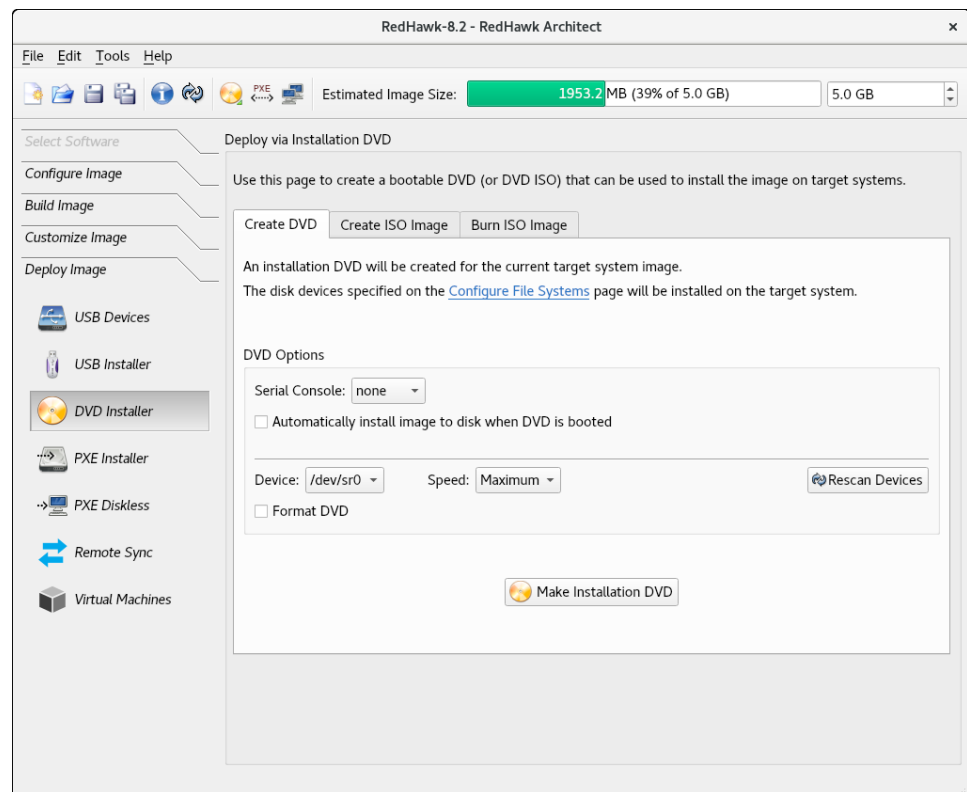


Figure 1-66 Deploy via Installation DVD Page

Choose **Create DVD** tab to directly burn a DVD that will install the target system image onto DVD media. No ISO image will be saved on disk in this mode.

Choose **Create ISO Image** tab to create an ISO file that contains an installer image. This ISO image can be later burned to DVD, or it may be useful with other tools or for long term storage.

Choose **Burn ISO Image** tab to burn a previously created ISO image to DVD media.

Check the box labeled **Automatically install image to disk when DVD is booted** in the **Create DVD** tab or the **Automatically install image to disk when ISO is booted** in the **Create ISO Image** tab, to create a DVD or ISO that will install the target system image onto a target system without any prompting or user interaction. In the “Installing via USB drive” section, starting on page 1-55, there is a full description of this option.

Depending on which operation mode is chosen, various options will be available for selection. Choose the options and settings that are appropriate for your specific needs.

Installing via PXE over a Network

RedHawk Architect can deploy a target system image to a target system over an Ethernet network connecting the host machine to the target machine. Installation of the root file system is performed by first creating a PXE-bootable installation image. A target machine can boot this installation image via PXE, which will then remotely copy the target system image into the target's local drive media.

This deployment method does not require the preparation of any removable installation media and it is often the fastest installation deployment method, however it does require some initial networking configuration on both the host and target systems.

NOTE

Various host system networking services must be properly configured before attempting to deploy a PXE-bootable installation image for the first time. If you have not configured the host networking services yet, you will need to invoke the PXE Target Manager and choose to Initialize PXE Services. See "Managing PXE Targets" on page 3-7 for more information.

To create a PXE-bootable installation image that will install the target system image over a network into a target system, select PXE Installer from the toolbox on the left side of the RedHawk Architect main window. The Deploy via PXE Installation page will then appear, as shown in the following figure.

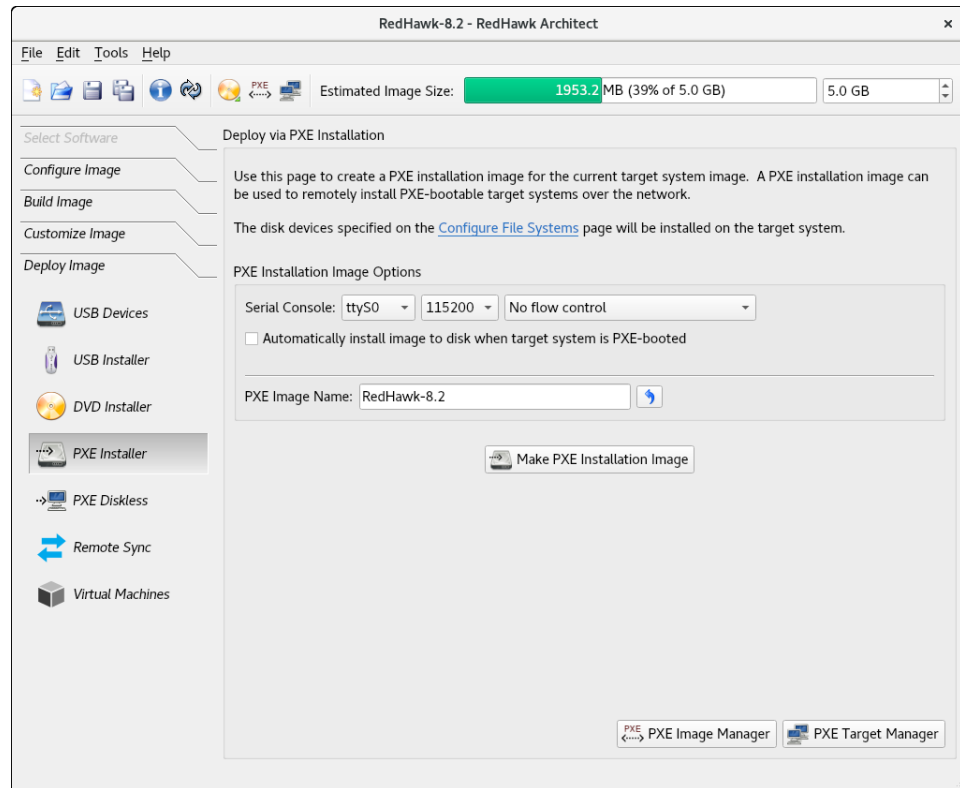


Figure 1-67 Deploy via PXE Installation Page

Choose the **Serial Console** setting that the target system will use for communicating with the host. If set to `none` the target will default the console to the VGA display.

Check the box labeled **Automatically Install Image to disk when target system is PXE-booted** to create a PXE image that will install the target system image onto a target system without any prompting or user interaction. In the “Installing via USB drive” section, starting on page 1-55 there is a full description of this option.

Enter a **PXE Image Name** for the installation image that will be created. Each installation image must have a unique name to identify it, though the names can be arbitrarily chosen by the user. Multiple images may be created and shared between targets. See “Managing PXE Images” on page 3-3 for more information.

Press **Make PXE Installation Image** to begin building the named PXE installation image.

NOTE

The PXE installation images are placed under a directory named `architect` which must reside under the system's `tftpboot` directory. The `tftpboot` directory defaults to `/var/lib/tftpboot`. While this directory is configurable, at this time the Architect tool only supports the default location.

Packing the PXE installation image will take several minutes. Once complete the PXE Installation Image Builder dialog will appear as shown in the following figure.

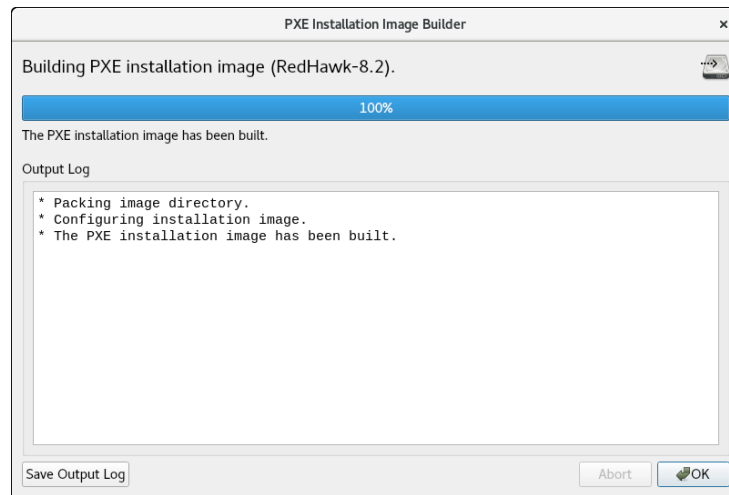


Figure 1-68 PXE Installation Image Building Complete

Press **Okay** to dismiss the dialog.

Once the PXE installation image is successfully built you can use the **PXE Target Manager** to schedule installation of the image for specific targets, and you can use the **PXE Image Manager** to edit or delete PXE installation images. See “Managing PXE Targets” on page 3-7 for more information.

Booting Diskless via PXE over a Network

Architect can create and then deploy a PXE-bootable diskless image to a diskless target system. When you select **PXE Diskless** from the toolbox on the left side of the RedHawk Architect main window, the **Deploy to Diskless Systems** page will be displayed.

The **Deploy to Diskless Systems** page provides two different implementations for booting diskless. The first implementation **NFS** uses NFS, the second labeled **RAMDISK** uses a Live RAMDISK.

Host and target connect over an Ethernet network. This deployment method does not require any local drive media to be present on the target system; any local drive media that is present on the target will be untouched and ignored. This method also requires some initial networking configuration on both the host and target systems. Note that the file system configuration for this deployment method is custom and ignores the settings in the **File Systems** configuration page.

With **NFS**, the target machine boots a diskless image via **PXE**, which will then mount the target system image via **NFS**. In a **Live RAMDISK** boot, the entire target system image is downloaded to the target's **RAM**.

NFS versus **Live RAMDISK** considerations:

- **Persistent Storage:** with the NFS option, the kernel mounts the root file system read-only over NFS but the user may optionally configure persistent storage via the **Configure Read-only Root Settings** link explained below. With the Live RAMDISK option, the entire root file system is writable but volatile.
- **Network Connection:** with the NFS option, the host and target must maintain an Ethernet working connection for the duration of the time the target is booted. With the Live RAMDISK, the connection is required only for booting.
- **Boot time and RAM Allocations:** with the NFS option, the read-only root file system is accessed via NFS although some system directories that require to be writable are RAM-based and volatile. With the Live RAMDISK option the entire SquashFS root file system is downloaded and copied to RAM during the boot.

NOTE

Various host system networking services must be properly configured before attempting to make an NFS diskless installation image and before booting a RAMDISK diskless installation image. If you have not configured the host networking services prior, you will instead be presented with a page allowing you to **Initialize PXE Services**. See “Managing PXE Targets” on page 3-7 for more information. Once PXE Services have been initialized you will be allowed to continue.

To create a PXE-bootable diskless image that will mount the target system image via NFS select the NFS tab and the page, shown in the figure below, will appear.

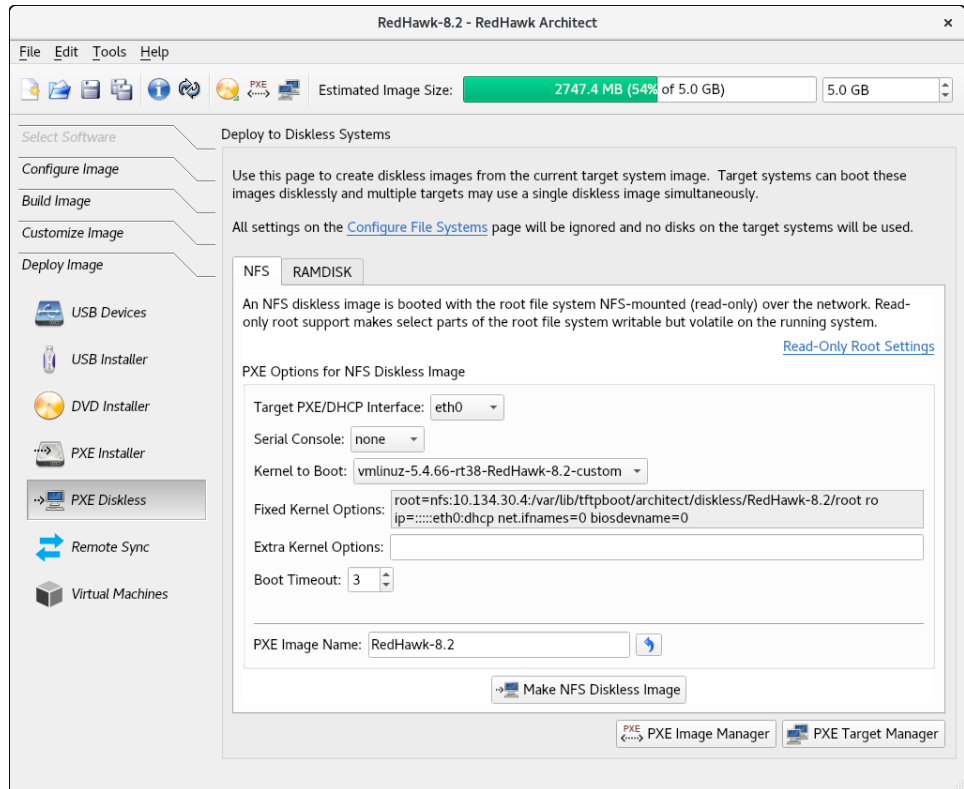


Figure 1-69 Initial PXE NFS Diskless Deployment Page

When the RAMDISK tab is selected, a different but similar page will appear as shown in the figure below.

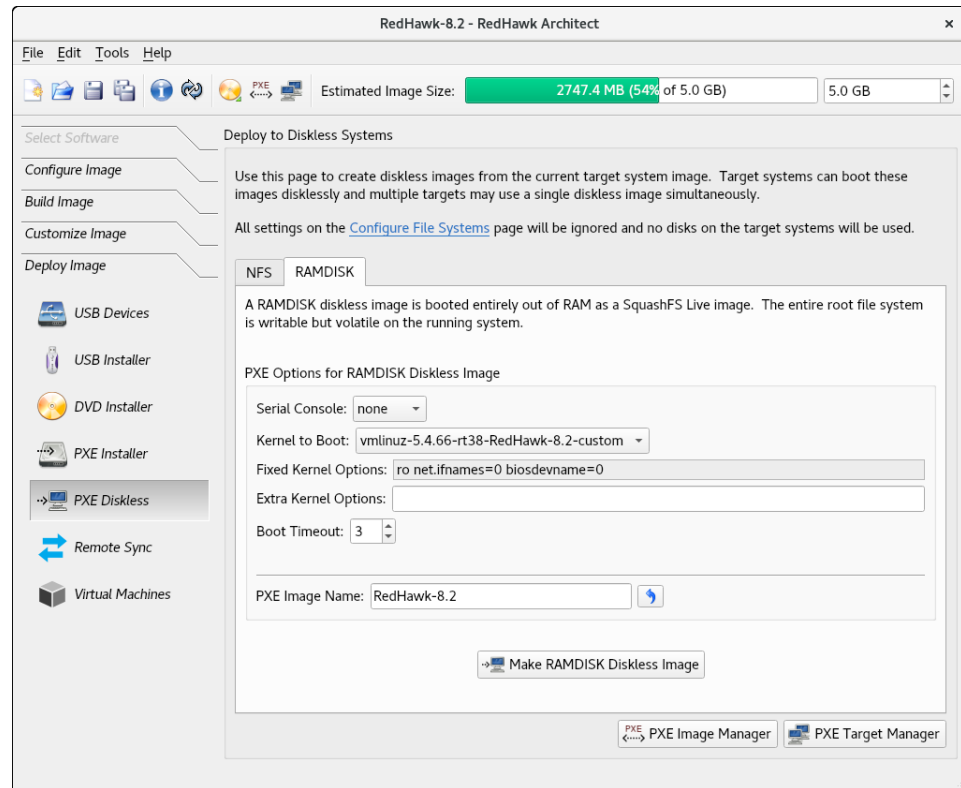


Figure 1-70 Initial PXE RAMDISK Diskless Deployment Page

The following settings are common to both creating an NFS and a RAMDISK bootable diskless image, with the exception of the **Configure Read-only Root Settings** and the **Target PXE/DHCP Interface** which pertains only to making NFS diskless images.

Choose the **Target PXE/DHCP Interface** network interface that the target system will use for communicating with the host. The target hardware must be configured to perform a PXE broadcast on this network interface at boot time.

Choose the **Serial Console** setting that the target system will use for communicating with the host. If set to **none** the target will default the console to the VGA display.

Choose the **Kernel to Boot** for the target. This will default to the kernel that has already been chosen as the default in the **Kernel Manager**, however a diskless image may specify a different default if desired.

The **Fixed Kernel Options** text area displays the required kernel boot options for the selected kernel; these kernel boot options are fixed and may not be changed by the user.

Enter any **Extra Kernel Options** that you would like to use for the diskless image. All kernel parameters specified here will be appended to the kernel's boot-time options. See the **kernel-parameters.txt** file in the kernel source **Documentation** directory for a complete list of the standard boot options.

Modify the **Boot Timeout** count to change the number of seconds the boot menu will be displayed before the diskless image will start booting. Increase the timeout if you wish to have more time to interrupt the boot menu to choose different kernels or boot options.

The **Configure Read-only Root Settings** pertains only when making NFS diskless images but not RAMDISK diskless images. Click on this link to adjust the size of RAM space allotted for temporary storage space. Use the up and down arrows to change the default size. Persistent storage, private to each target, can be accessed on the target under `/var/lib/stateless/state` and on the nfs server under `/var/lib/tftpboot/clientstate/<target-system>`.

Enter a **PXE Image Name** for the diskless image that will be created. Each diskless image must have a unique name to identify it, though the names can be arbitrarily chosen by the user. Multiple images may be created and shared between targets. See “Managing PXE Images” on page 3-3 for more information.

When choosing to create an NFS Diskless Image, Press **Make NFS Diskless Image** to begin building the named PXE diskless image.

Creating the PXE NFS diskless image should take several minutes. Once complete the PXE Diskless Image Builder dialog will appear as shown in the following figure.

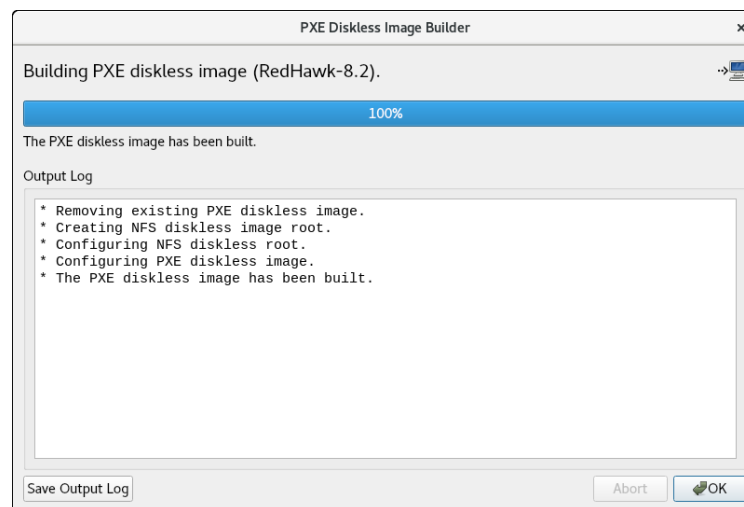


Figure 1-71 PXE NFS Diskless Image Building Complete

Press **Okay** to dismiss the dialog.

When choosing to create a RAMDISK Diskless image, Press **Make Live RAMDISK Diskless Image** to begin building the named PXE diskless image.

Creating the PXE RAMDISK Diskless image should take several minutes. Once complete the PXE Diskless Image Builder dialog will appear as shown in the following figure.

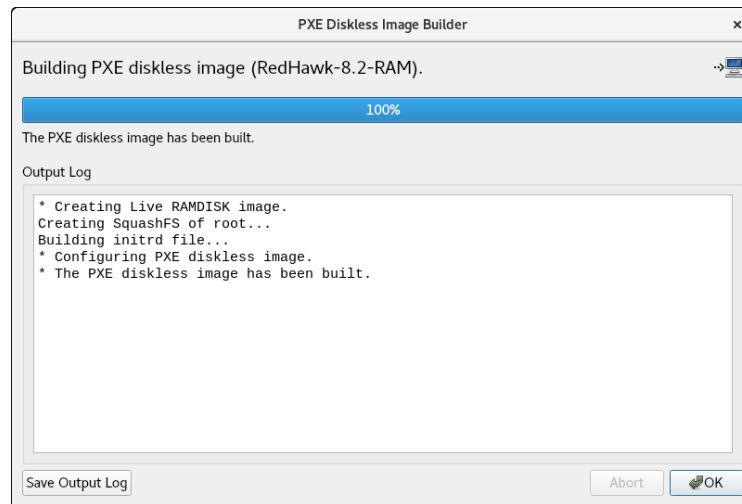


Figure 1-72 PXE RAMDISK Diskless Image Building Complete

Press **Okay** to dismiss the dialog.

NOTE

The PXE diskless images are placed under a directory named `architect` which must reside under the system's `tftpboot` directory. The `tftpboot` directory defaults to `/var/lib/tftpboot`. While this directory is configurable, at this time the Architect tool only supports the default location.

Once the PXE diskless image is successfully built you can use the **PXE Target Manager** to configure diskless booting of the image for specific targets, and you can use the **PXE Image Manager** to edit or delete PXE diskless images. See Section "Managing PXE Targets" on page 3-7 for more information.

Remote Sync

Synchronization between a target system and the target system image on the host is supported by the **Remote Sync** function found in the toolbox on the left side of the RedHawk Architect main window.

Changes made on the target can be applied to the target system image (sync from target) and changes made in the target system image can be applied to the target (sync to target).

Following is a summary of the steps:

1. Configure the target for syncing in the **PXE Target Manager** page.
2. Reboot the target.

3. Select the target in the Synchronize with Remote Targets page.
4. Click on the desired sync action button in the Synchronize with Remote Targets page.

To configure the target for synchronization, from the Architect PXE Target Manager page, click on the desired target and use the Edit Target button to select Start remote sync process as shown below:

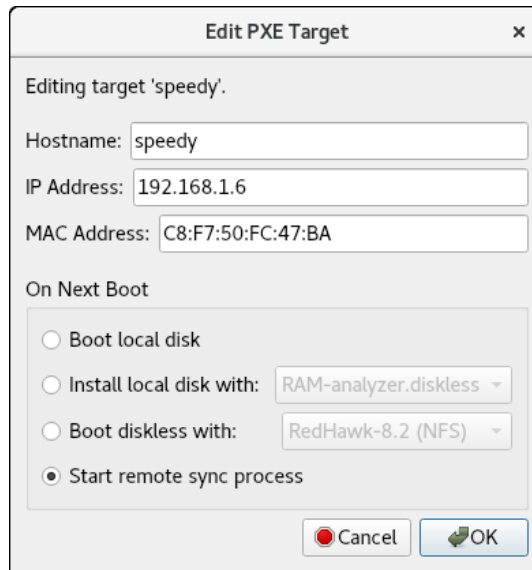


Figure 1-73 Configure target 'speedy' for remote sync

Press OK and you will see the menu showing the target has been configured to sync on the next boot as shown below:

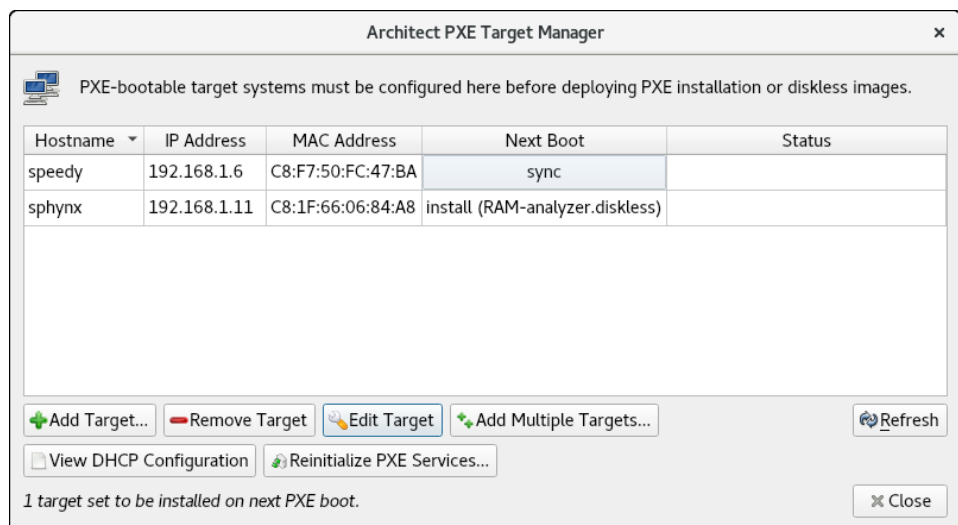


Figure 1-74 Target 'speedy' configured for remote sync

Reboot the target system and you will see a splash screen with a count down of 10 seconds. If you hit any key during those 10 seconds, you will be presented with the menu shown below. Note that the default is a non-interactive sync as no interaction is really required but, for this example, an interactive sync was chosen.

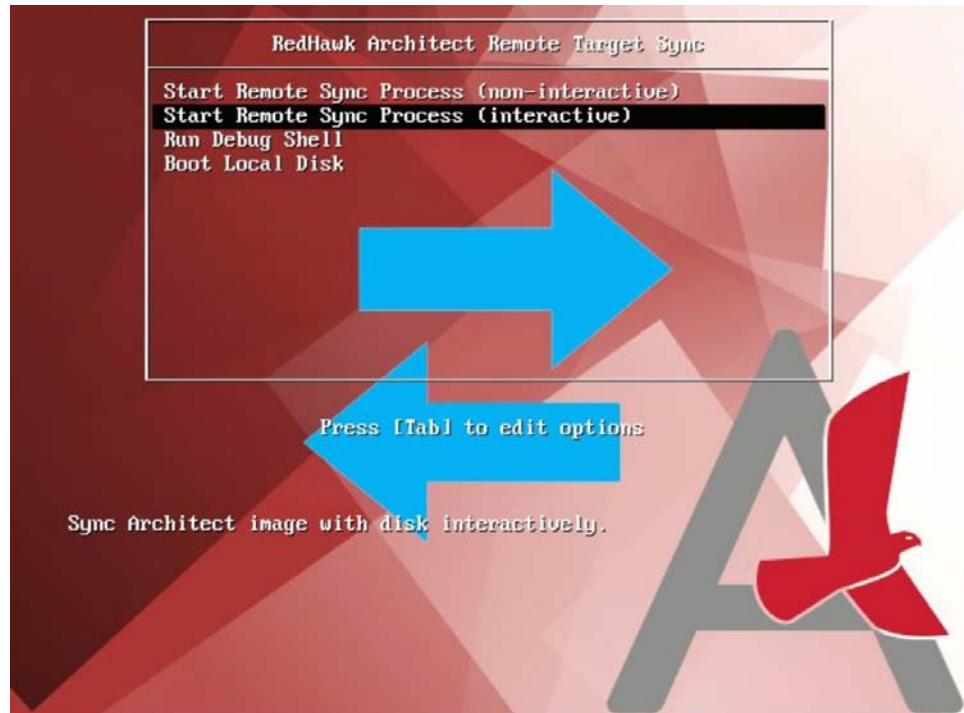


Figure 1-75 Sync Menu with interactive selected

On the target system you will see some start-up messages and then the 'waiting for host' message. Note that you do not have to wait for this message as the host and target will wait for each other.



Figure 1-76 Waiting on host

Now on the host system, go to the Remote Sync Deployment Page and verify that the target's name appears in the Target to Sync with: box and then press on the desired action: Sync From Target or Sync to Target.

In Sync To Target, the target will be updated with changes made in the target system image. Files added or deleted in the target system image will be added or deleted on the target system.

In **Sync From Target**, the target system image will be updated with changes made in the target system. Files added or deleted in the target system will be added or deleted on the target system image.

For this example, **Sync To Target**, was selected:

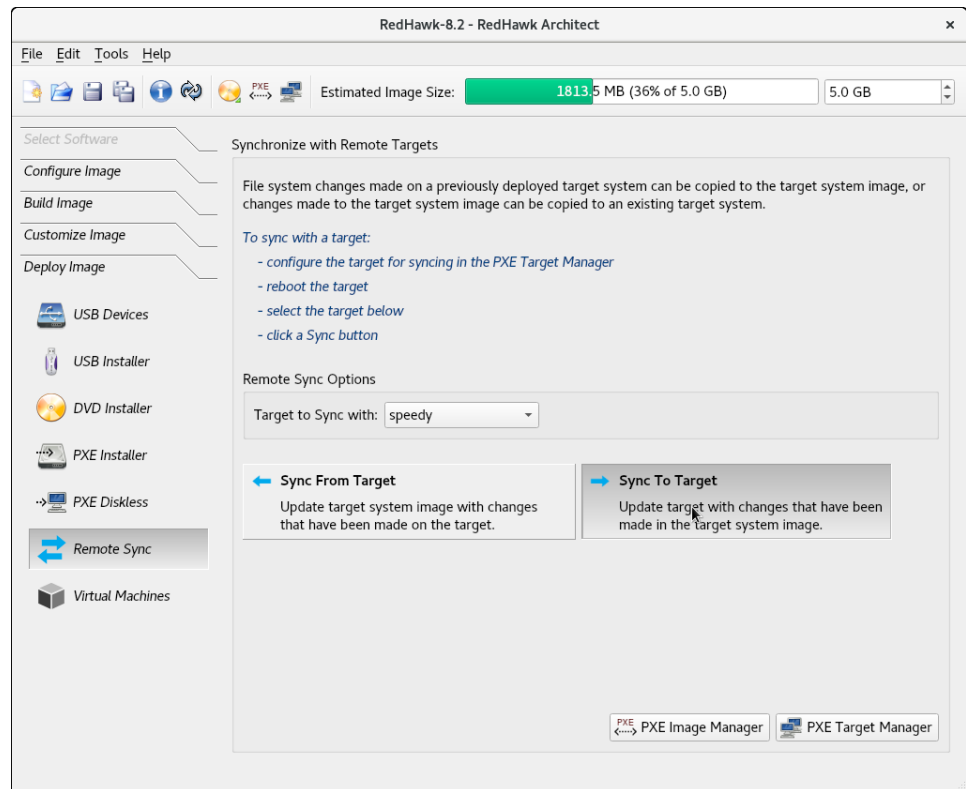


Figure 1-77 Sync To Target 'speedy'

Once you pressed one of the sync buttons on the host, you will get a prompt on the target asking if you wish to continue (if in interactive sync mode). Type 'y' to continue. When the sync completes, the messages on the target system will look similar to the ones on the following page:

```

Start Remote Sync from Architect to continue.
(waiting for host...)

This tool will synchronize the file systems on this system
with the Architect image 'RedHawk-8.2'.

Do you wish to continue? (y/n) y

Mounting disk file systems.

Syncing target with Architect image 'RedHawk-8.2'.
(waiting for host to finish sync...)
Host finished syncing.
Unmounting disk file systems.

Syncing is complete!

Removing PXE config file (0A861EAC) from server.

Press ENTER to reboot. _

```

Figure 1-78 Synchronization complete; messages on the target

After the synchronization, the target system must be rebooted. This happens automatically in the non-interactive mode while in the interactive you have to press ENTER to reboot the system.

In this example, a new software package was installed in the target system image and it was applied to the target via the Sync to Target function. The output log below shows the **rpm** related files added to the target system:

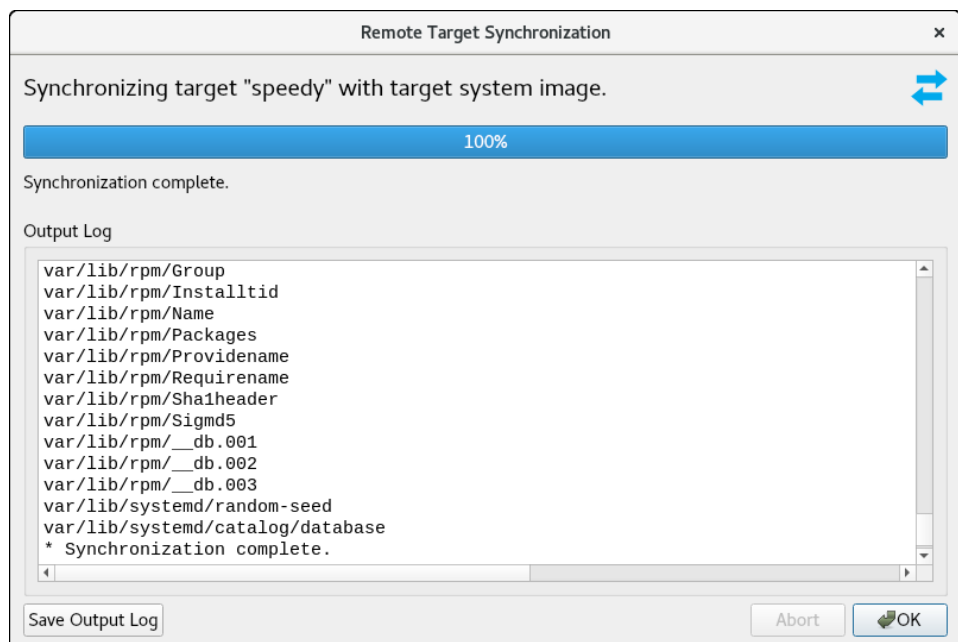


Figure 1-79 Synchronization Complete Messages on Host

Deploying to Virtual Machine

To deploy a target system image to a virtual machine image which can be booted in a virtual machine, click on the **Virtual Machine** button. This will display the Deploy to Virtual Machine page, as shown in the following figure.

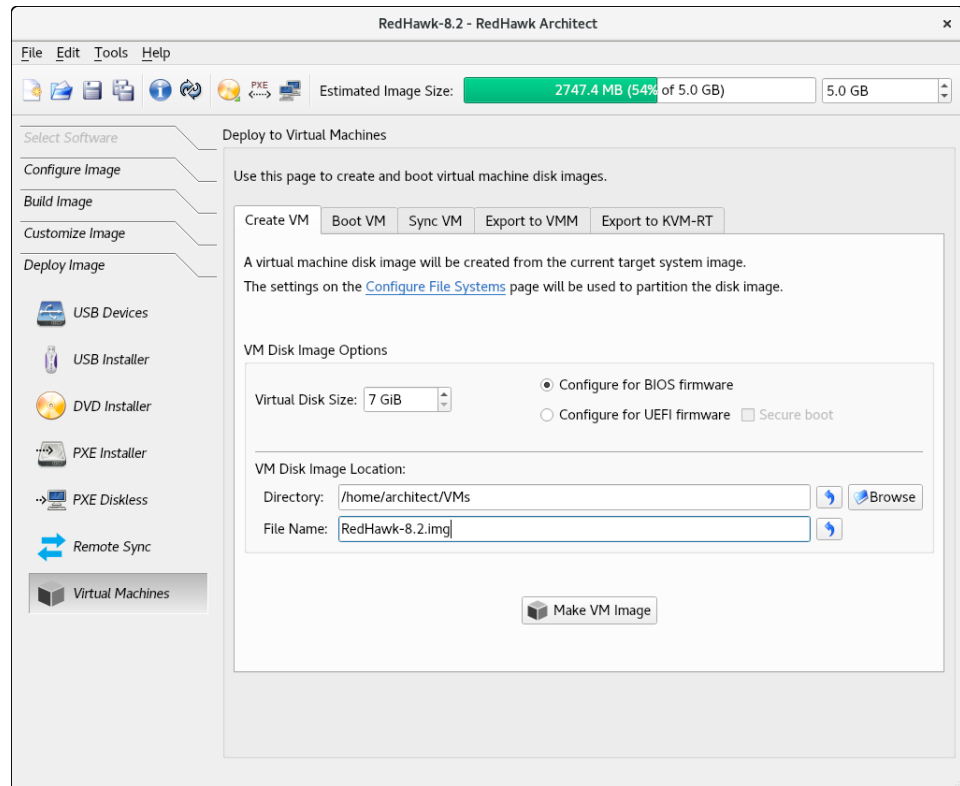


Figure 1-80 Deploy to Virtual Machines Page

The Deploy to Virtual Machines Page defaults to the CREATE VM tab. In this mode, pressing the **Make VM Image** button will simply create a virtual machine image file from the session's target system image. The name and location of the virtual machine image file created can be customized using the **Directory** and **File Name** text fields, and the directory **Browse** button.

Make sure to select the **Configure for UEFI firmware** check box in the **VM Disk Image Options** section if the intended target system utilizes UEFI firmware.

Selecting the **Boot VM** tab allows you to boot a previously created virtual machine image directly on the host using the QEMU PC System Emulator. Choose the virtual machine image using the **Disk Image to Boot** text field or the file **Browse** button.

Selecting the **Sync VM** tab allows you to perform file synchronization between the target system image and the virtual machine disk image in both directions:

- Use the **Sync From VM** button to update the target system image with all file changes that have been made inside the booted virtual machine image.

- Use the Sync To VM button to update the virtual machine with all the changes that have been made in the target system image. The exported changes will be visible in the virtual machine disk image the next time it is booted using QEMU.


These two synchronization features provide additional flexibility for customizing a target system image. Image customization can also be accomplished inside a booted virtual machine, and this customization is very natural as the environment closely resembles the final booted environment that will be available on the actual target hardware.


Selecting Export to VMM allows you to utilize a previously created virtual machine image with very flexible and powerful virtual machine management tools provided on the host. Once the image has been exported, the graphical VMM tools can boot and manipulate the image completely independently of Architect. See the `virt-manager(1)` man page for more information.


Selecting Export to KVM-RT allows you utilize a previously created virtual machine image with KVM-RT. RedHawk KVM-RT is a Real-Time Hypervisor solution utilizing QEMU/KVM and RedHawk Linux real-time kernel features.

Editing an Existing Session

A session can be saved at any time and loaded later to continue work on a target system image.

To save the current session click on the Save Session icon  or on Save Session in the File menu. Selecting Save Session As in the File menu displays a file selection dialog and allows you to save the current session using a different name.

To make a copy of the current session click on the Duplicate Session icon  or on Duplicate Session in the File menu. Duplicating a session makes a copy of the current session and optionally copies an existing image to go with it.

To load an existing session, click on the Open Session icon  or on Open Session in the File menu. You may also click on the Open button from the opening dialog when Architect first starts.

Importing ISO Images

This chapter describes how to create or import on-disk ISO images to dramatically speed up and virtually automate target system image creation.

Importing ISO Images

Normally when building a target system image the user is prompted to insert various optical media discs containing the software that is required in order to create the initial target system image. If only one or two images are being produced, manually inserting optical media is generally acceptable.

However, if the user is generating and maintaining several different target system image configurations, it is often preferable to create on-disk ISO images of the various optical media discs. To accomplish this, select the **Media ISO Manager** item in the **Tools** menu, or click the **Import ISO Images** button on the **Build Image** page, and the following dialog will appear.

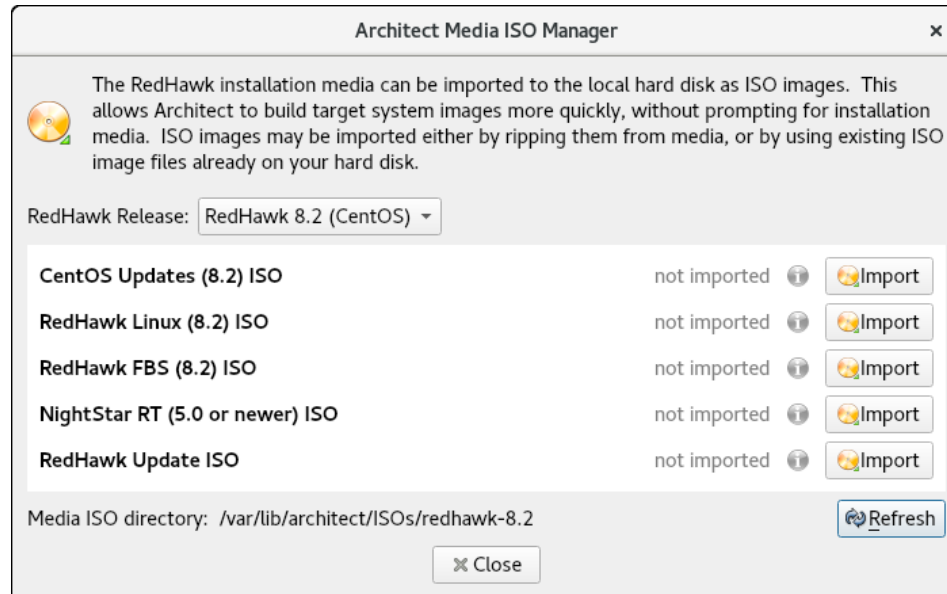


Figure 2-1 Import ISO Images Dialog

Pressing the **Import** button, will display a menu with three different options to import ISO images:

- Import ISO images directly from manually inserted optical media
- Copy ISO images from already existing ISO image files

- Link ISO images to already existing ISO images files

These various methods will be described in the following sections.

The user can import different sets of ISO images for different RedHawk release versions; use the **Select a RedHawk release** pull-down menu to select which version of RedHawk to import ISO images for.

In addition, different import methods can be used *within* a specific RedHawk release. For example, it is possible to use one import method to import the CentOS ISO image and a different import method to import the RedHawk and NightStar ISO images. All combinations are valid.

Importing ISO Images From Optical Media

To use this method select the **Rip ISO from media** import method and then press the **OK** button to begin the import process. A dialog similar to the following dialog will be displayed.

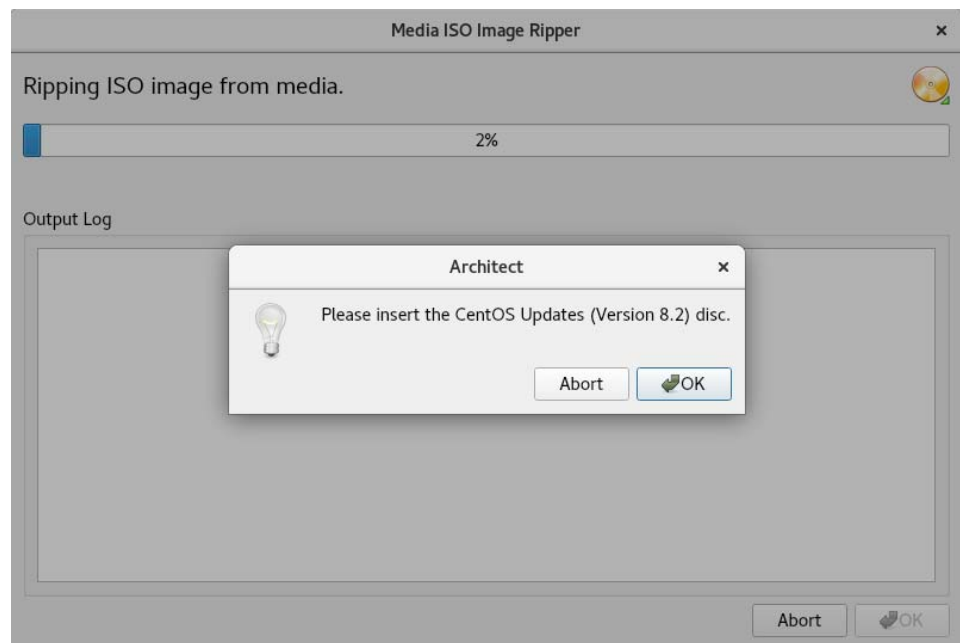


Figure 2-2 Rip ISO Images From Media

At this point the correct optical media disc for the requested item should be manually inserted into the host system's optical media tray. Once the optical media has been inserted, press **OK** to begin copying the ISO image from the optical media onto the host system's hard-drive. Various status messages will be displayed as the copy progresses.

NOTE

The 8.2 system release installation discs, both CentOS and Red Hat, are created using dual layer technology and require a drive that is dual layer-capable to read the data correctly.

Copying ISO Images From Existing ISO Images

If you already have the required media in ISO format on disk, Architect can import the ISO by creating Architect-specific copies of the ISO images; copying is useful when the original ISO images may be removed or unavailable at some point in the future.

To make ISO copies, select the Copy existing ISO file on disk import method and then press the OK button to begin the import process. A file selection dialog will be displayed. Navigate the file selection dialog to the appropriate directory to select the ISO image. An example ISO file selection is presented below. In this example, the ISO images are stored in the `/root/Downloads` directory and the CentOS Updates ISO image has been selected.

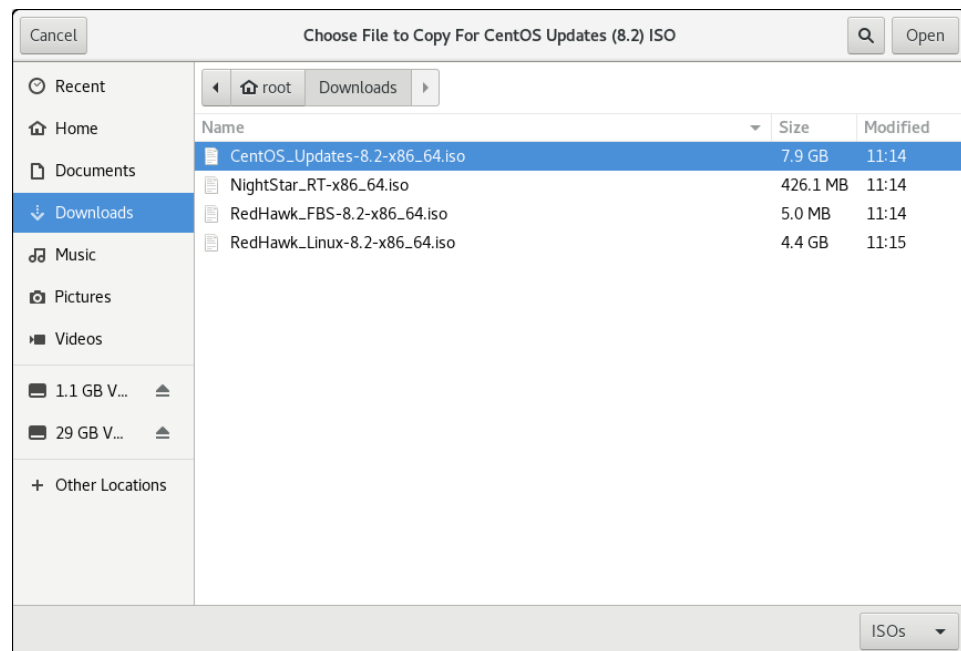


Figure 2-3 Copy ISO Image File Selector

Press the **Open** button to begin the process of copying the ISO image file into Architect's `/var/lib/architect/ISOs` directory. Once the copy is completed, the ISO image file that was copied is no longer needed and can be removed if necessary.

Linking To Existing ISO Images

If you already have the required media in ISO format on disk, Architect can import the ISO by creating symbolic links to the ISO images; linking is useful when you can be sure that the original ISO images will persist indefinitely.

To create ISO symbolic links, select the Symbolically link to existing ISO file on disk import method and then press the OK button. Navigate the file selection dialog presented to the appropriate directory and select the ISO image. An example ISO file selection is presented below. In the example, the ISO images are stored in the `/root/Downloads` directory and the RedHawk Linux ISO image has been selected.

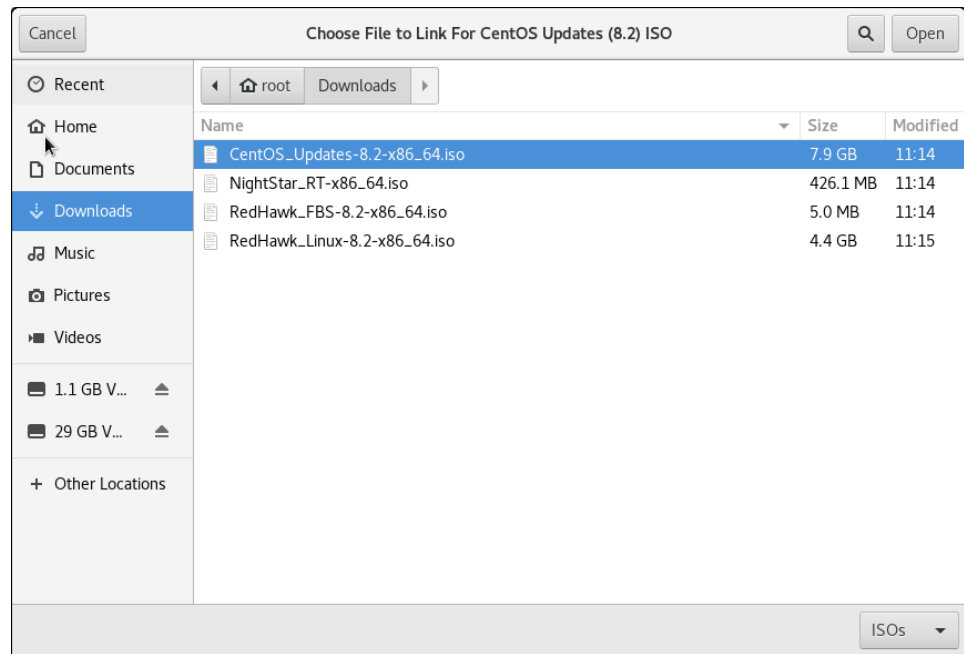


Figure 2-4 Symlink To ISO Image File Selector

Press the **Open** button to immediately create a symbolic link to the selected ISO image file. The symbolic link will be created and placed inside Architect's `/var/lib/architect/ISOs` directory. Once the copy is completed, the ISO image file that was linked to must be preserved and kept at the exact same file-system location in order for Architect's symbolic link to be valid.

NOTE

Architect will detect if it has symbolic links to ISO image files that have been erroneously removed and ISO image will no longer be shown as a valid ISO image in the list of imported ISO images.

If this happens, the ISO image must be imported again to be valid, otherwise Architect will prompt for the corresponding optical media disc during any subsequent target system image builds.

Deleting Imported ISO Images

Previously imported ISO images can be deleted at any time by pressing the **Delete** button of the corresponding ISO image. This is not generally necessary, but can be done in order to save disk space or to recover from the rare case of a file corruption.

This chapter describes how to manage PXE resources on the host and how targets in your network environment will use these PXE resources.

Enabling PXE on Targets

The Preboot eXecution Environment (PXE) provides a method for booting target systems using a network interface, without the requirement of having access to any local storage on the target system.

To use PXE, targets must first be configured to perform a PXE broadcast during boot. To enable the PXE broadcast perform the following steps:

1. Reboot the target and stop the system immediately after POST (Power-On Self-Test), normally by pressing Delete or F2, to get into the BIOS settings menu.
2. Each kind of computer has a slightly different BIOS settings menu, however the general rule is to navigate to the 'PCI Device' or the 'Integrated Devices' section of the BIOS menu and enable PXE boot on the first Ethernet interface that is present. Ensure that the chosen interface is connected to a switch that is present on the same network as the host system.
3. Record the MAC address of the target's Ethernet interface for later use with Architect's PXE Target Manager dialog. See "Managing PXE Targets" on page 3-7 for more information.

NOTE

Some older BIOSes do not provide an option to boot with PXE. The *Etherboot* utility can be used instead, however Concurrent Real-Time does not support this configuration. See <http://etherboot.org> for more information.

Initializing PXE Services

Various PXE-related services on the host system need to be properly initialized before any of the PXE-based image deployment methods can be used.

To initialize these services, click on PXE Target Manager in the Tools menu and you will be presented with the following dialog.

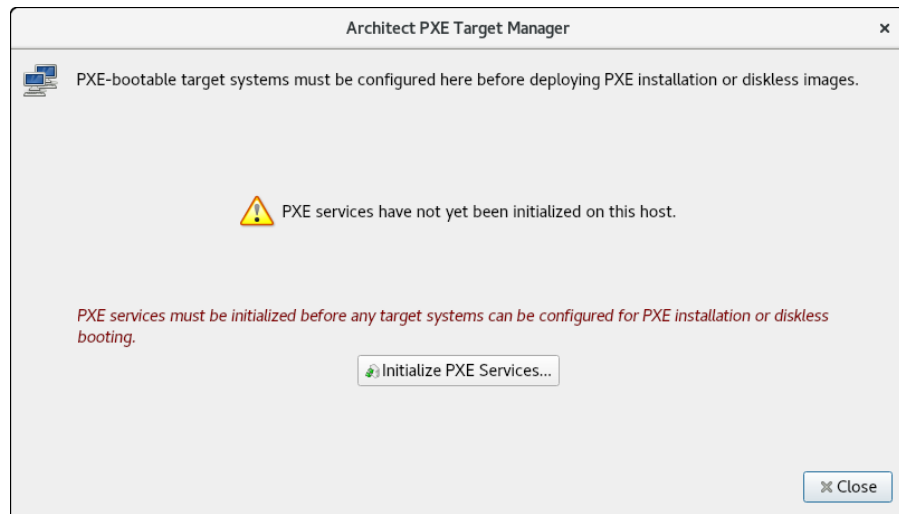


Figure 3-1 PXE Target Manager Unitialized

Press Initialize PXE Services... to begin initializing the PXE services and you will then be presented with the following dialog.

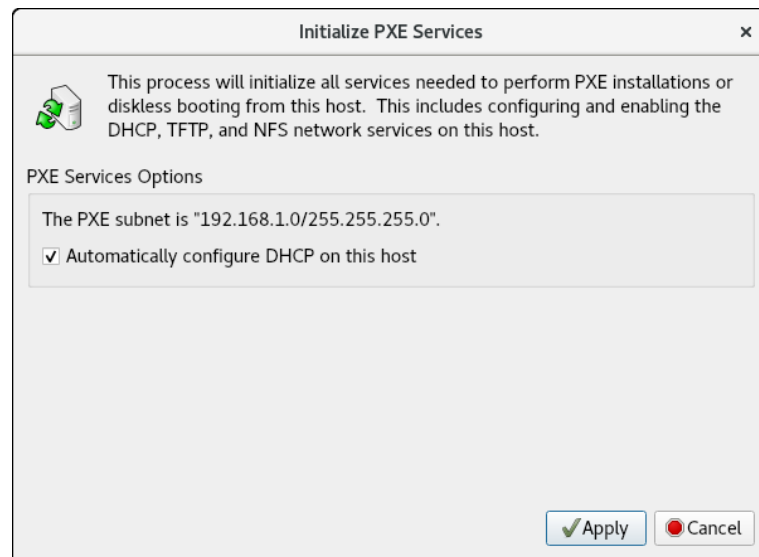


Figure 3-2 Initialize PXE Services Dialog

First, choose the network subnet that you wish to use for all PXE communications between the host and its targets. If only one subnet is available a choice as in the figure above, the information is still presented so that the user can verify that the subnet is the desired subnet.

By default DHCP services will be automatically configured and enabled on the host, and this is the recommended approach. However if another DHCP server already exists on the chosen subnet you will need to uncheck **Automatically configure DHCP on this host** or the two DHCP servers will conflict with each other. In this case, you will need to manually merge the DHCP configuration files generated by Architect on the host with those of the actual DHCP server. See “Manual DHCP Configuration” on page A-1 for more information.

Once these settings are correct for your environment click **Apply** and the initialization will begin. Once the initialization has completed successfully you will see the following display in the dialog.

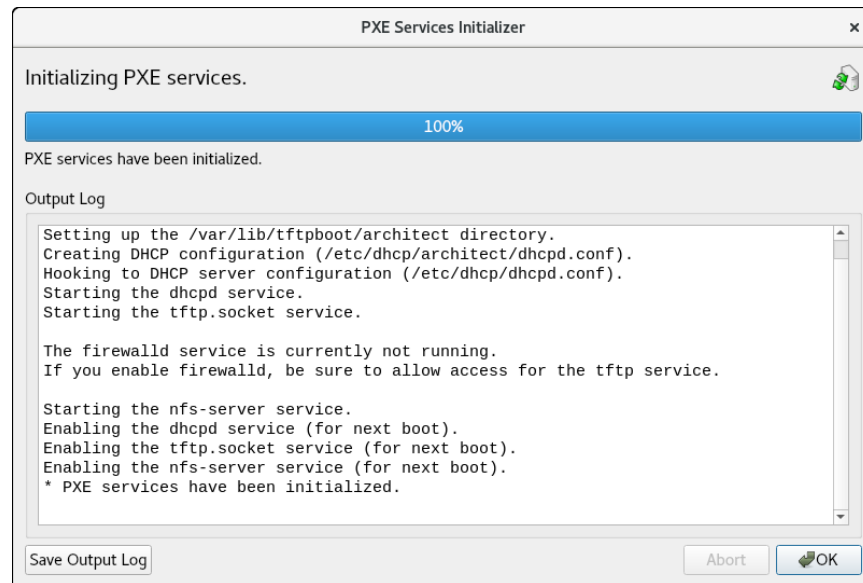


Figure 3-3 PXE Services Initializer Done

Press **OK** to return to the main PXE Target Manager window. At this point the host is now configured with the required networking services to enable PXE image deployments.

Managing PXE Images

PXE images that have been created with the PXE Installer and PXE Diskless tools in RedHawk Architect's **Deploy Image** toolbox are resources that can be inspected and managed with the PXE Image Manager.

Select **PXE Image Manager** from the **Tools** menu to access the PXE Image Manager.

If no PXE images have yet been deployed you will be presented with the following empty dialog. The PXE Image Manager will remain empty until PXE images are created using the PXE deployment tools in the **Deploy Image** toolbox.

The PXE Image Manager lists all of the installation images that have been deployed by the PXE Installer tool. The Remote Sync Preferences allows you to change global parameters affecting remote syncs.

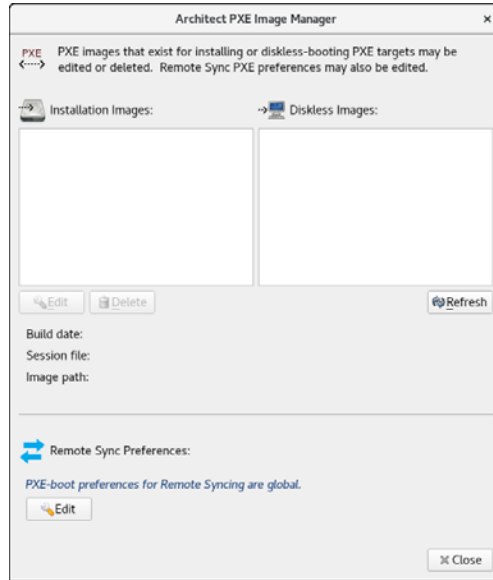


Figure 3-4 PXE Image Manager.

Clicking on the Edit button of the Architect PXE image Manager page will bring up the Edit Remote Sync Preferences page shown below. Note that changes are not applied to a particular target but globally.

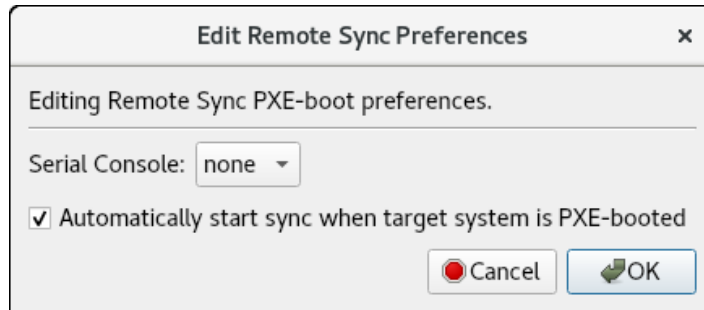


Figure 3-5 Global parameters for Sync Operations

The following dialog shows an example of the PXE Image Manger with installation images.

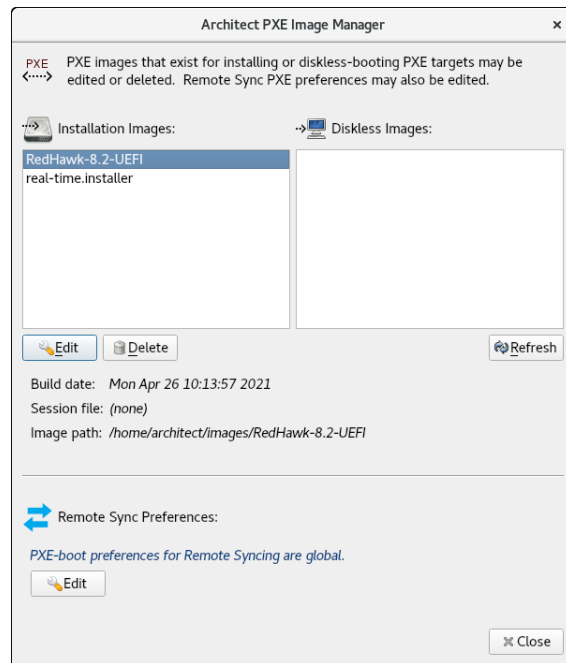


Figure 3-6 PXE Image Manager with Installation Images

Each PXE installation image that is created using the PXE Installer deployment method is effectively a snapshot in time of the target system image being managed during an Architect session. These images can be inspected and/or individually removed.

Selecting an installation image from the list will display the following details about the image:

- The date the installation image was deployed
- The session file that was being used at the time of creation; if the session has not yet been saved the string `None` will be displayed instead
- The path of the target system image that the installation image was created for

To delete an installation image, first select it in the list and then press the **Delete** button. You will be presented with a dialog asking for confirmation and simply press **Yes** to delete it.

To edit the attributes of an installation image, first select it in the list and then press the **Edit** button. You will be presented with a dialog allowing you to modify several attributes of the installation image including:

- The **Serial Console** for the install image.
- The **Automatically install image to disk when target is PXE-booted** checkbox.

Press **OK** to apply any changes made to the attributes of the installation image.

The **Refresh** button will refresh the list to match the resources currently on disk, however refresh is only useful if multiple copies of Architect are being used simultaneously to create and manage PXE installation images.

Press **Close** at any time to dismiss the dialog and return to the Architect main window.

PXE Diskless Images

The PXE Image Manager lists all of the diskless images that have been created by the PXE Diskless tool. The following dialog shows an example of the PXE Image Manager with diskless images.

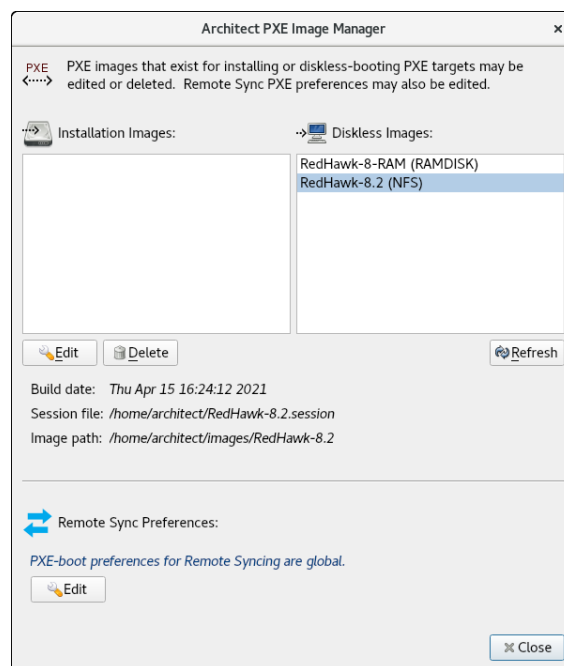


Figure 3-7 PXE Image Manager with Diskless Images

Similar to PXE installation images, PXE diskless images created using the PXE Diskless deployment method create a snapshot in time of the target system image being managed. These images can be inspected and/or individually removed.

Selecting a diskless image from the list will display the following details about the image:

- The date the diskless image was created
- The session file that was being used at the time of creation; if the session has not yet been saved the string None will be displayed instead
- The path of the target system image that the diskless image was created for

To delete a diskless image, first select it in the list and then press the **Delete** button. You will be presented with a dialog asking for confirmation and simply press **Yes** to delete it.

To edit the attributes of a diskless image, first select it in the list and then press the Edit button. You will be presented with a dialog allowing you to modify several attributes of the diskless image including:

- The PXE/DHCP Device that the diskless image should use for all PXE and DHCP network traffic.
- The Serial Console for the diskless image.
- The Kernel to Boot for the diskless image.
- Any Extra Kernel Options for the diskless image's kernel to use.
- The Boot Timeout for the diskless image's boot menu to use.

Press OK to apply any changes made to the attributes of the diskless image.

The Refresh button will refresh the list to match the resources currently on disk, however refresh is only useful if multiple copies of Architect are being used simultaneously to create and manage PXE diskless images.

Press Close at any time to dismiss the dialog and return to the Architect main window.

Managing PXE Targets

PXE images that have been created with the PXE Installer and PXE Diskless tools in RedHawk Architect's Deploy Image toolbox are resources that can be assigned to targets using the PXE Target Manager.

Select PXE Target Manager from the Tools menu to access the PXE Target Manager. If no targets have yet been added you will be presented with the following dialog showing an empty list of targets.

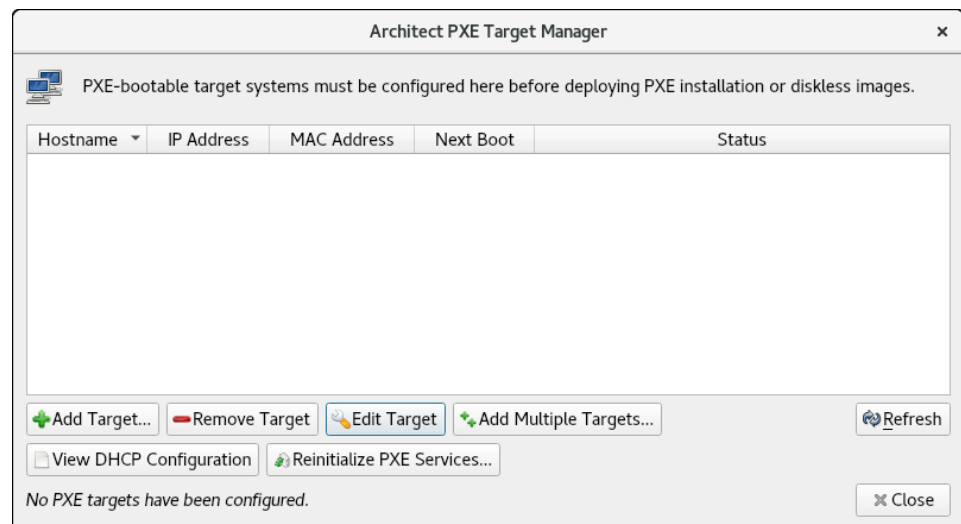


Figure 3-8 PXE Target Manager

The PXE Target Manager's target list will remain empty until targets are added using one of the **Add** buttons below the list.

Adding Targets

All targets that will be using PXE installation images and/or PXE diskless images must first be added to the PXE Target Manager. Targets can be added either individually or in groups, and these two methods are described in the following sections.

Adding Single Targets

A single target can be added to the PXE Target Manager by pressing the **Add Target...** button on the PXE Target Manager dialog.

The following dialog will be shown.

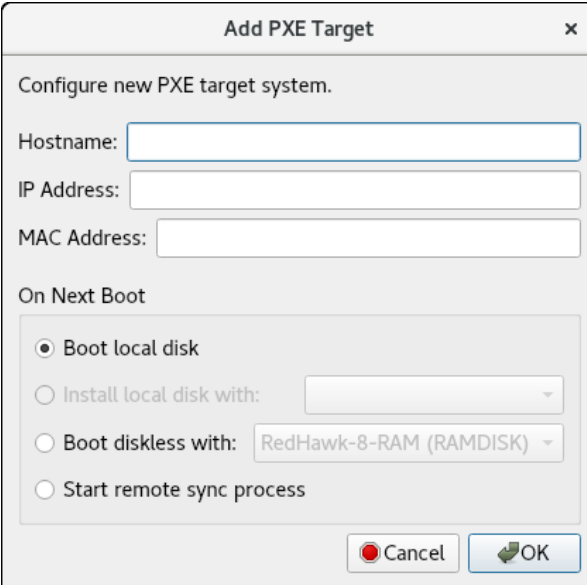


Figure 3-9 Add PXE Target Dialog

Enter the hostname, IP address and MAC address of the target in the corresponding fields.

In the **On Next Boot** area of the dialog, choose the desired target behavior that it will perform after its next reboot and subsequent PXE broadcast. The following behaviors are supported:

- Choose **Boot local disk** to have the target simply boot from its local disk upon next reboot.
- Choose **Install local disk with** and select a PXE installation image from the pulldown to have the target install the local disk with the selected PXE installation image upon next reboot. This option is only available if

PXE installation images have previously been created; see “Installing via PXE over a Network” on page 1-60 for more information.

- Choose **Boot diskless with** and select a PXE diskless image from the pull-down to have the target boot disklessly with the selected PXE diskless image upon next reboot. This option is only available if PXE diskless images have previously been created; see “Booting Diskless via PXE over a Network” on page 1-62 for more information.

Press **OK** to add this target to the PXE Target Manager and dismiss the dialog.

After targets have been entered the PXE Target Manager will look similar to the following example:

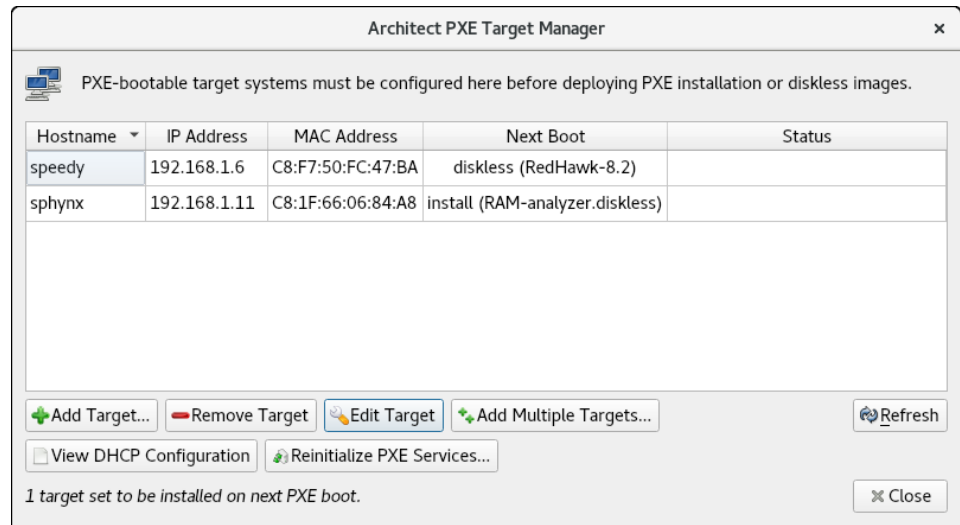


Figure 3-10 PXE Target Manager with Targets

When you are finished adding targets press the **Close** button to return to the Architect main page.

Adding Multiple Targets

Multiple target can be added to the PXE Target Manager by pressing the **Add Multiple Targets...** button on the PXE Target Manager dialog. The following dialog will be shown.

Add Multiple PXE Targets x

You may configure multiple new PXE target systems at one time.

These targets will be configured with IP addresses from a range of contiguous addresses on the PXE subnet (192.168.1.0/255.255.255.0). Hostnames for the targets will be generated automatically.

Starting IP Address:

How many targets would you like to configure?

Base Hostname:

On Next Boot

Boot local disk

Install local disk with:

Boot diskless with:

Start remote sync process

Hostname	IP Address	MAC Address

Figure 3-11 Add Multiple PXE Targets Dialog

Enter the starting IP address in the corresponding field. This will be the address of the *first* target in the target group, and each additional target will simply increment this setting by one IP address.

Choose the number of targets to configure in the corresponding field. You can configure up to 256 targets simultaneously using this interface.

Enter the hostname prefix to be used for all targets in the Base Hostname field. This prefix will be used for the start of each hostname generated and a unique integer suffix will be appended for each target.

In the On Next Boot area of the dialog, choose the desired target behavior that it will perform after its next reboot and subsequent PXE broadcast. See the discussion of On Next Boot above on page 3-8 for more information.

Once the desired settings have been entered, click the Apply button. A dialog similar to the following will be shown:

Add Multiple PXE Targets

You may configure multiple new PXE target systems at one time.

These targets will be configured with IP addresses from a range of contiguous addresses on the PXE subnet (192.168.1.0/255.255.255.0). Hostnames for the targets will be generated automatically.

Starting IP Address: 192.168.1.20

How many targets would you like to configure? 10

Base Hostname: target-

Apply

On Next Boot

- Boot local disk
- Install local disk with: RAM-analyzer.diskless
- Boot diskless with: RedHawk-8.2 (NFS)
- Start remote sync process

Hostname	IP Address	MAC Address
target-020	192.168.1.20	
target-021	192.168.1.21	
target-022	192.168.1.22	
target-023	192.168.1.23	
target-024	192.168.1.24	
target-025	192.168.1.25	
target-026	192.168.1.26	
target-027	192.168.1.27	
target-028	192.168.1.28	
target-029	192.168.1.29	

Cancel OK

Figure 3-12 Add Multiple PXE Targets after Apply

Pressing **Apply** caused the dialog to generate hostname entries for all of the requested targets. Enter the MAC address of each target into its corresponding **MAC Address** field.

A MAC addresses is required for each target if Architect is directly managing DHCP services. However, MAC addresses are not necessary when you are *not* using Architect to directly manage DHCP services; in that case you can leave them blank. See “Manual DHCP Configuration” on page A-1 for more information.

Removing Targets

To remove a target that is currently being managed by the PXE Target Manager first select the target hostname in the list and then press the **Remove Target** button. You will be presented with a confirmation dialog. Press **Yes** to remove the target. Note that the target can be again added at any time if desired.

Editing Targets

To change the settings for a target currently being managed by the PXE Target Manager first select the target hostname in the list and then press the **Edit Target** button. You will be presented with a dialog similar to the following:

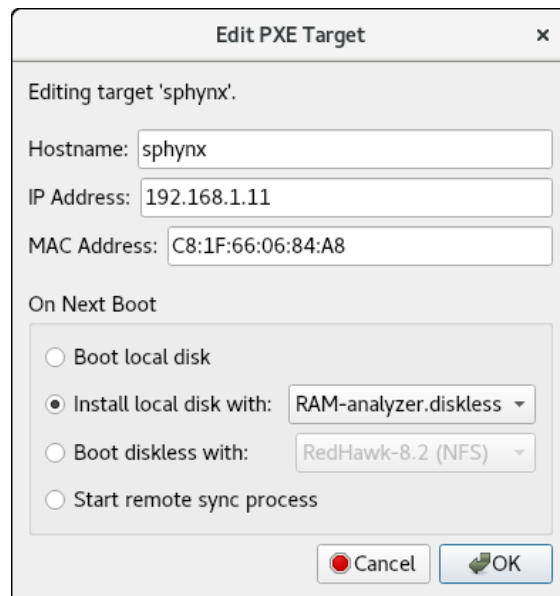


Figure 3-13 Edit PXE Target Dialog

With this dialog you can change the hostname, IP address and MAC address of the host. You can also change the On Next Boot setting to change the behavior of the target upon next reboot. Refer to the discussion of On Next Boot above on page 3-8 for more information.

Press OK to apply these settings and return to the PXE Target Manager.

Manual DHCP Configuration

This appendix describes how to add the required DHCP configuration for Architect PXE targets to an active existing DHCP server configuration. It is preferable to allow the Architect tool to administer DHCP by checking the box labeled **Automatically configure DHCP on this host**, however if another DHCP server already exists on the desired subnet you must follow the steps described in this section. Refer to “Initializing PXE Services” on page 4-1 and also the **dhcpd.conf(5)** man page for more information.

Overview

The **View DHCP Configuration** button on the PXE Target Manager may be used to view the required DHCP configuration for Architect PXE targets. The information displayed may be cut and pasted into a text editor when editing the existing DHCP server configuration.

Alternatively, the DHCP configuration files maintained by Architect may be viewed or copied directly from the `/etc/dhcp/architect` directory on the host system where Architect is installed. This directory contains two files: `dhcpd.conf` and `dhcpd-targets.conf`. The `dhcpd.conf` file contains a subnet stanza with all required DHCP parameters set for PXE targets and it will look similar to the following example:

```
option pxe-client-arch-type code 93 = unsigned integer
16;

subnet 10.134.30.0 netmask 255.255.255.0 {
    option subnet-mask 255.255.255.0;
    option broadcast-address 10.134.30.255;

    server-name cholula;
    next-server 10.134.30.166;
    if option pxe-client-arch-type = 00:09 {
        filename "architect/efi64/syslinux.efi";
    } elsif option pxe-client-arch-type = 00:07 {
        filename "architect/efi64/syslinux.efi";
    } else {
        filename "architect/bios/pxelinux.0";
    }

    use-host-decl-names on;
    include "/etc/dhcp/architect/dhcpd-targets.conf";
}
```

In this example, the PXE subnet is the 10.134.30.0/24 subnet. The last line includes all PXE target host declarations from the `dhcpd-targets.conf` file, which will look similar to the following example:

```
host monitor2 {
    hardware ethernet 00:02:AC:55:88:A9;
    fixed-address 10.134.30.65;
}
host analyzer {
    hardware ethernet 00:1B:21:D8:51:0C;
    fixed-address 10.134.30.11;
}
host ccenter {
    hardware ethernet 84:2B:2B:9E:6E:1B;
    fixed-address 10.134.30.17;
}
host monitor1 {
    hardware ethernet 00:23:AE:D9:1C:AF;
    fixed-address 10.134.30.64;
}
host recorder {
    hardware ethernet 00:80:8E:02:9A:92;
    fixed-address 10.134.30.72;
}
```

This configuration data must be added to the active DHCP server configuration file(s). On most systems, the main DHCP configuration file is `/etc/dhcp/dhcpd.conf`.

Installing DHCP Configuration

The simplest way to add the Architect DHCP configuration to the DHCP server is to copy the files from `/etc/dhcp/architect` on the Architect host to the same location on the DHCP server host, and then add a single `include` line to the existing `/etc/dhcp/dhcpd.conf` file to include the Architect configuration. If creating the `/etc/dhcp/architect` directory on the DHCP server host is not possible, you may use any valid location on the file system; simply adjust the include lines accordingly.

To accomplish this perform the following steps:

1. Copy files from the Architect host to the DHCP server host. For example, run this command on the Architect host:

```
scp -r /etc/dhcp/architect dhcp_server:/etc/dhcp
```

where `dhcp_server` is the name or IP address of the DHCP server host.

2. Include this configuration in the main DHCP server configuration file. Edit `/etc/dhcp/dhcpd.conf` on the DHCP server host and add this line near the bottom of the file:

```
include "/etc/dhcp/architect/dhcpd.conf";
```

Note that most DHCP servers allow multiple subnet stanzas to be defined for the same subnet, each with different parameters defined within the scope of the stanza. Because of this, you are allowed to have the PXE target systems declared within one subnet stanza, and other DHCP clients or a dynamic IP address pool declared in another subnet stanza for the same subnet.

NOTE

You cannot have duplicate host declarations or reuse an IP address or MAC address in different host declarations anywhere in the entire DHCP configuration.

See the `dhcpcd.conf(5)` man page for more information.

Paths

/etc/dhcp/architect A-1, A-2
/etc/dhcp/dhcpd.conf A-2
/var/lib/architect 2-3, 2-4

A

Architect

introduction 1-1
main window 1-4
opening dialog 1-3
running 1-2

B

Base Distribution packages 1-6
baud rate 1-17
BIOS settings 3-1
Board Support Packages 1-39
building an image 1-32

C

ccur-config 1-43, 1-46
chroot shell 1-48
configuring an image 1-14
console 1-16
copy files into image 1-47
creating a new session 1-3, 1-4, 1-5
Custom Kernel
 build 1-45
 configuration 1-42
 remove 1-47
customizing an image 1-36

D

default gateway 1-19
DHCP
 automatic configuration 3-3

manual configuration A-1
view configuration A-1

dhcpd.conf A-1
dhcpd-targets.conf A-1
domains 1-19

E

editing an existing session 1-3, 1-4, 1-73
enabling PXE 3-1
encryption (LUKS2) 1-24, 1-25, 1-26

F

File Manager 1-47
FIPS 1-41, 1-42
flash error 1-53
flashing an image 1-50

H

hostname 1-19

I

Image Cleanup 1-49
Initialize PXE Services 3-2
install additional RPMs 1-38
installing software 1-6, 1-32

K

Kernel
 configuring 1-42
 export configuration 1-45
 import configuration 1-44
Kernel Manager 1-41
KVM-RT 1-73

L

logical volume manager (LVM) 1-24, 1-25, 1-26, 1-27, 1-28
LUKS2 1-24, 1-25, 1-26

M

main window 1-4

N

networking 1-18
new session 1-3, 1-4, 1-5
New Session dialog 1-6
NightStar RT installation options 1-13
noatime file system option 1-21

O

On Next Boot behavior 3-8, 3-10, 3-12
Out-of-Sync Notice 1-16, 1-17, 1-19, 1-21, 1-29, 1-30

P

POST 3-1
Power On Self Test 3-1
primary DNS server 1-19
PXE
 broadcast 3-1, 3-8, 3-10
 diskless images 3-6
 enabling 3-1
 installer images 3-5
 manage images 3-3
 manage targets 3-2, 3-7

R

read-only root file system 1-21
RedHawk installation options 1-11
Remote Target Synchronization 1-67, 1-68, 1-69, 1-70, 1-71, 3-4
Remove RPM database 1-50
Remove selected from image 1-50
root password 1-14
running Architect 1-2

S

saving a session 1-3, 1-4, 1-73
secondary DNS server 1-19
serial port 1-17
software to install 1-6
system run level 1-14

T

time zone 1-14

U

UEFI firmware 1-51, 1-52, 1-72

V

Virtual Machine
 booting with QEMU 1-72
 deployment 1-72
 image synchronization 1-72